



BIHAR JE 2023

निर्माण BATCH

CIVIL ENGINEERING

Series-4



Use
Y579
Max Discount

A stream function is defined by the expression $\psi = 2X^2 - Y^3$.
calculate the components of velocity at point P(X = 3, Y = 1).

- (a) -3, -12
- (b) +3, +12
- (c) +3, +1
- (d) +12, -1

USE MAX DISCOUNT CODE Y579

Adda247

One ground is

(Jharkhand SSC JE 2016)

- (a) 2400 sq. metre
- (b) 222.96 sq. metre
- (c) 10.764 sq. metre
- (d) 2.41 sq. metr

Use
Y579
Max Discount

Adda247

USE MAX DISCOUNT CODE Y579

Adda247

One ground is

(Jharkhand SSC JE 2016)

- (a) 2400 sq. metre
- (b) 222.96 sq. metre
- (c) 10.764 sq. metre
- (d) 2.41 sq. metr

Use
Y579
Max Discount

Adda247

USE MAX DISCOUNT CODE Y579

Adda247

When 1 cm on a map represents 10 m on the ground, the representative fraction of the scale is:

(SSC JE Evening 2014)

(a) $\frac{1}{100}$

(b) $\frac{1}{1000}$

(c) $\frac{1}{10000}$

(d) $\frac{1}{10}$

Adda247

Use
Y579
Max Discount

USE MAX DISCOUNT CODE Y579

Adda247

Geodetic survey of India was done, using:

[UKPSC A E Paper II 2013]

- (a) Triangulation
- (b) Traversing
- (c) Trilateration
- (d) None of the above

Use
Y579
Max Discount

Adda247

WELCOME
TO Adda247

किस्मत भी बादशाह
उसी को बनाती है
जो खुद कुछ करने का
हुनर रखते हैं।

Lifeshayari.com



USE MAX DISCOUNT CODE Y579

Adda247

Error due to carelessness of chainmain is called

DMRC J.E. 13-04-2018 (Shift-II)

- (a) Systematic
- (b) Compensating
- (c) Random
- (d) Mistake

Use
Y579
Max Discount

Adda247

USE MAX DISCOUNT CODE Y579

Adda247

Which instrument is called pendulum level?

Hariyana SSC JE Shift-I (10-04-2018)

- (a) Dumpy level
- (b) Theodolite
- (c) Total Station
- (d) Automatic Level

Use
Y579
Max Discount

Adda247

The design of a structure is

(SSC JE 3 March 2017 Morning Shift)

- (a) The planning of the structure
- (b) The calculation of straining actions at salient points
- (c) Deciding the material and proportions of the various members of the structure
- (d) None of these

Use
Y579
Max Discount

The common assumption that all rivets share equally a non-eccentric load is valid at a load _____:

(SSC JE 1 March 2017 Morning Shift)

- (a) Below the working load
- (b) Equal to the working load
- (c) Above the working load
- (d) Equal to the failure load

Use
Y579
Max Discount

USE MAX DISCOUNT CODE **Y579**

Adda247

One acre is

(Jharkhand SSC JE 2016)

- (a) 2.471 Hectares
- (b) 1.40467 Hectares
- (c) 1.0 Hectares
- (d) 0.40467 Hectares

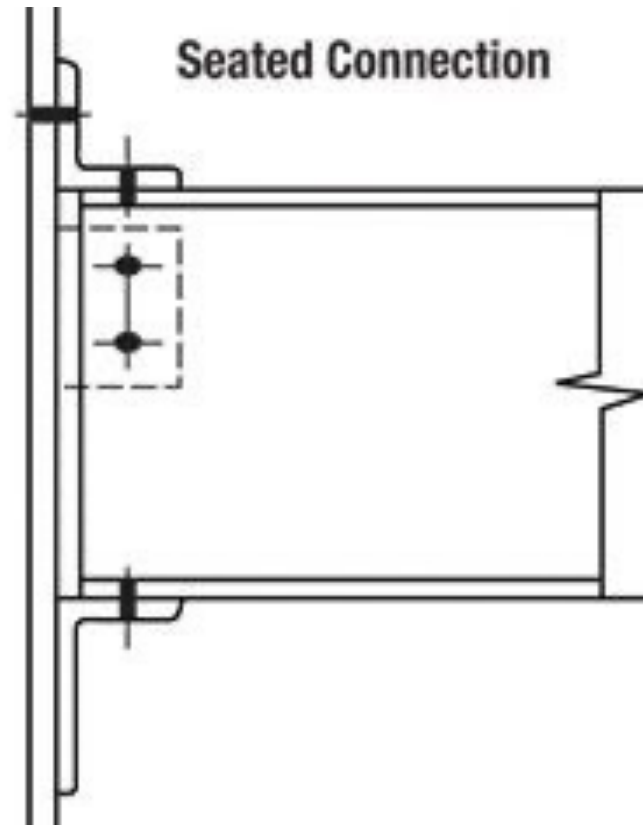
Use
Y579
Max Discount

Adda247

The connection of one beam to another beam by means of an angle at the bottom and an angle at the top, is known as

SSC JE 23.01.2018 (Evening Shift)

- (a) Unstiffened seated connection
- (b) Stiffened seated connection
- (c) Seated connection
- (d) None of these



Use
Y579
Max Discount

USE MAX DISCOUNT CODE Y579

Adda247

For unstiffened flange of a beam in flexural compression, the maximum allowable outstand is equal to

(SSC JE 1 March 2017 Evening Shift)

- (a) 20t
- (b) 16t
- (c) 32t
- (d) 14t

Use
Y579
Max Discount

Adda247

For unstiffened flange of a beam in flexural compression, the maximum allowable outstand is equal to

(SSC JE 1 March 2017 Evening Shift)

(a) 20t

(b) 16t

(c) 32t

(d) 14t

Minimum pitch	2.5 times of the nominal diameter of the rivet
<u>Maximum pitch for</u>	
(i) any two adjacent rivets (including tacking rivets)	32t or 300 mm, whichever is less
(ii) rivets lying in a line parallel to the force in the member.	
(a) in tension	16t or 200 mm, whichever is less
(b) in compression	12t or 200 mm, whichever is less

Use
Y579
Max Discount

USE MAX DISCOUNT CODE Y579

Adda247

Find the working stress of hollow steel column with load of 3500 kN and ultimate stress is 540 N/mm^2 . Use safety factor as 5

(M.P. Vyapam Draftman 2016)

- (a) 108 N/mm^2
- (b) 109 N/mm^2
- (c) 110 N/mm^2
- (d) 111 N/mm^2

Use
Y579
Max Discount

Adda247

USE MAX DISCOUNT CODE **Y579**

Adda247

A steel column ($f_y = 250 \text{ N/mm}^2$, $f_u = 410 \text{ N/mm}^2$, and $f_{cd} = 200 \text{ N/mm}^2$) of effective sectional areas 6000 mm^2 will have strength equal to

M.P. Sub Engg. 4 Sep 2018 2.00 pm

- (a) 1200 kN
- (b) 1500 kN
- (c) 2460 kN
- (d) 3000 kN

Use
Y579
Max Discount

Adda247

Angle section can be used as purlin when slope of the roof truss is

(SSC JE 1 March 2017 Evening Shift)

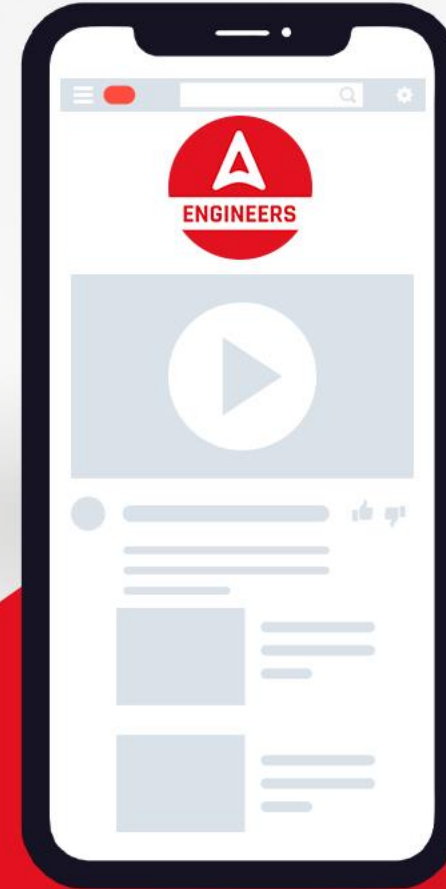
- (a) Between 40° and 70°
- (b) Less than 30°
- (c) Greater than 30°
- (d) Less than 45°

Use
Y579
Max Discount



SUBSCRIBE NOW

Engineers Adda247
YouTube Channel



USE MAX DISCOUNT CODE Y579

Adda247

For deformed bars conforming to IS 1786, the design bond stress in limit state method shall be:

SSC JE 25-09-2019 (Morning)

- (a) Increase by 60%**
- (b) Increased by 20%**
- (c) Decreased by 20%**
- (d) Increased by 40%**

**Use
Y579
Max Discount**

USE MAX DISCOUNT **CODE Y579**

Adda247

1 nautical mile is equal to:

LMRC J.E. 13-05-2018 (Shift-I)

(a) 1.258 km

(b) 1.528 km

(c) 1.852 km

(d) 1.825 km

Adda247

Use
Y579
Max Discount

USE MAX DISCOUNT CODE Y579

Adda247

What is the very first crack that occurs in any RCC member, especially if constructed during summer

RRB JE CBT-II 29-08-2019 (Evening)

- (a) Flexural crack
- (b) Settlement crack
- (c) Corrosion spelling
- (d) Shrinkage crack

Use
Y579
Max Discount

USE MAX DISCOUNT CODE Y579

Adda247

If the tensile stress of a steel bar of dia d is 140 N/mm^2 and the bond stress is 0.6 N/mm^2 , the required bond length will be:

(BCCL JE 30 April 2017)

- (a) 45 D
- (b) 50 D
- (c) 53 D
- (d) 59 D

Adda247

Use
Y579
Max Discount

USE MAX DISCOUNT CODE Y579

Adda247

The length of the straight portion of a bar beyond the end of the hook should be at least

SSC JE 2008/

SSC JE 25-01-2018 (Evening Shift)

- (a) Twice the diameter**
- (b) Thrice the diameter**
- (c) Four times the diameter**
- (d) Seven times the diameter**

**Use
Y579
Max Discount**

USE MAX DISCOUNT CODE Y579

Adda247

What is the thickness (cm) of a two brick wall made up of standard modular brick?

SSC JE 27-01-2018 (Morning Shift)

- (a) 9
- (b) 10
- (c) 20
- (d) 40

Use
Y579
Max Discount

Adda247

USE MAX DISCOUNT CODE Y579

Adda247

Which one of the following brick is suitable for the high-class brick masonry?

SSC JE 23-01-2018 (Morning Shift)

- (a) Bull nose bricks
- (b) Jhama bricks
- (c) Modular bricks
- (d) Under burnt bricks

Use
Y579
Max Discount

Adda247

USE MAX DISCOUNT CODE Y579

Adda247

Give the size of door for kitchen area

Hariyana SSC JE Shift-I (09-04-2018)

- (a) $1.0 \text{ m} \times 2.1 \text{ m}$
- (b) $0.8 \text{ m} \times 2.1 \text{ m}$
- (c) $1.2 \text{ m} \times 2.1 \text{ m}$
- (d) $0.9 \text{ m} \times 2.1 \text{ m}$

Use
Y579
Max Discount

Adda247

USE MAX DISCOUNT CODE **Y579**

Adda247

The height of sill level from floor level is -

Haryana SSC JE Shift-I (09-04-2018)

- (a) 700 mm to 800 mm
- (b) 750 mm to 900 mm
- (c) 700 mm to 850 mm
- (d) 750 mm to 850 mm

Use
Y579
Max Discount

Adda247

APP FEATURES



Download Now
Adda247 APP



Premium Study Material



Current Affairs



Job Alerts



Daily Quizzes



Subject-wise Quizzes



Magazines



Power Capsule



Notes & Articles



Videos

Give the size of door for main rooms.

Hariyana SSC JE Shift-II (2018)

- (a) 1.0 m × 2.1 m
- (b) 1.5 m × 2.1 m
- (c) 1.2 m × 2.1 m
- (d) 0.9 m × 2.1 m

Use
Y579
Max Discount

USE MAX DISCOUNT CODE Y579

Adda247

The chemical used in anti-treatment is –

Hariyana SSC JE Shift-I (10-04-2018)

- (a) DDT
- (b) Chloroform
- (c) Chlorine
- (d) Acid

Use
Y579
Max Discount

Adda247

If R and T are rise and thread of a stair spanning horizontally and steps are supported by wall on one side and by stringer beam on the other side, the steps are designed as beam of width:

(SSC JE 2014, Evening)

(a) $T - R$

(b) $\sqrt{R^2 + T^2}$

(c) $\frac{(R + T)}{2}$

(d) $R + T$

Use
Y579
Max Discount

USE MAX DISCOUNT CODE Y579

Adda247

Which of the following is the process of removal of permanent hardness of water?

RRB JE CBT-II 28-08-2019 (Evening)

- (a) Boiling of water
- (b) Zeolite process
- (c) Filtration process
- (d) Lime treatment

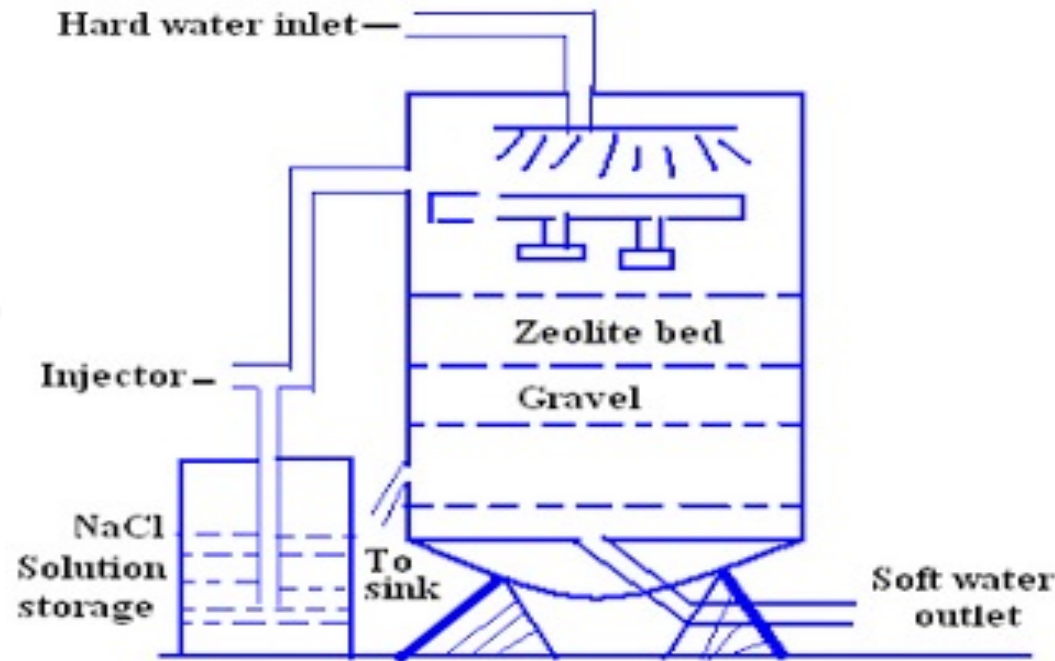
Use
Y579
Max Discount

Adda247

Which of the following is the process of removal of permanent hardness of water?

RRB JE CBT-II 28-08-2019 (Evening)

- (a) Boiling of water
- (b) Zeolite process
- (c) Filtration process
- (d) Lime treatment



Use
Y579
Max Discount

USE MAX DISCOUNT CODE Y579

Adda247

Tintometer is used to measure

RRB JE CBT-II 28-08-2019 (Evening)

- (a) Hardness
- (b) Odour
- (c) Temperature
- (d) Colour

Use
Y579
Max Discount

Adda247

USE MAX DISCOUNT CODE Y579

Adda247

The chloride content of public water supplies should NOT exceed-

RRB JE CBT-II 28-08-2019 (morning)

(a) 150 mg/L

(b) 250 mg/L

(c) 80 mg/L

(d) 50 mg/L

Adda247

Use
Y579
Max Discount

USE MAX DISCOUNT CODE Y579

Adda247

Turbidity of raw water is a measure of –

UPRVUNL JE 2019

- (a) Chemical oxygen demand
- (b) pH of water
- (c) Floating objects
- (d) Suspended solids

Use
Y579
Max Discount

Adda247

APP FEATURES



Download Now
Adda247 APP



Premium Study Material



Current Affairs



Job Alerts



Daily Quizzes



Subject-wise Quizzes



Magazines



Power Capsule



Notes & Articles



Videos



Mission

BARC 2023

TRAINING SCHEME (CATEGORY-I)

Civil Engineering

Course Highlights :-

- 350+ hours of Live Technical Classes
- Access to Recorded Videos
- Question Practice Session
- Weekly Practice Paper (Video Solutions Also)
- Doubt Session With Experts

Mission BARC 2023
Training Scheme (Category-I)
Civil Engineering
Start May 8, 2023 9 AM to 11 PM



BTSC JE 2023

SELECTION BATCH

Civil Engineering

Course Highlights :-

- 300+ hours of Live Technical Classes
- 130+ hours of Live Non-Technical Classes
- Access to Recorded Videos
- Latest Pattern of BTSC JE
- Question Practice Session
- Weekly Practice Paper (Video Solutions Also)
- Doubt Session With Experts
- Every Saturday Doubt Class



BTSC JE SELECTION BATCH
Civil Engineering
सिलेक्शन का सफर
Complete **LIVE** Batch
Start May 22, 2023 9 AM to 8 PM



SUBSCRIBE NOW

Engineers Adda247
YouTube Channel

Engineers Adda
SUPERSTARS

SSC JE 2022 Pre
QUALIFIED Result

 Pratik Kumar Singh 220118143	 Nishi Singh 3010360710	 Sakin Singh 2411100704	 Pradeep Kumar 3003101418	 Karan Jindal 3208109456	 Pankaj Khandelwal 3010104232	 Aditya Kumar 2003100534	 Adarsh KJ 2201108788
 Anand Kumar 2001308723	 Rajan Singh 2411101788	 Pankaj Agrawal 3001109530	 Anshul Kumar 5382100	 Sandeep Singh 8601106292	 N. SREKA 2201100336	 Kunal 3011100014	 Pradeep Kumar Singh 3001102754
 Anand Kumar 3013102386	 Pradeep Kumar 2408102046	 Anshul Kumar 3000059849	 Sachin Kumar Singh 3000043084	 Aditya J. Kumar 9205000618	 Lakh Kumar 2201100704	 Divya Mishra 9011201129	
 Hemant Kumar Poppal 3001102011	 Anshul Kumar 50062237922	 Rajan Singh 2411101788	 Preeti 1801100087	 Anshul Kumar 4206200617	 Lakh Kumar 1380208	and Many More	