

BHEL ET

Previous Year Paper

(Electrical) 23 Aug, 2023

Adda247

BHEL Exam 23rd 24th Aug 2023

Participant ID	
Participant Name	
Test Center Name	
Test Date	23/08/2023
Test Time	2:00 PM - 4:30 PM
Subject	Engineer Trainee Electrical

Section : Question on Subject/Discipline

Q.1 In an R-L series circuit, the source DC voltage is V. Find the current at time $t = \frac{L}{R}$ sec.

- Ans**
- 1. $.865 \frac{V}{R}$ A
 - 2. $.982 \frac{V}{R}$ A
 - 3. $.632 \frac{V}{R}$ A
 - 4. $.950 \frac{V}{R}$ A

Question ID : 630680304252
 Option 1 ID : 6306801183570
 Option 2 ID : 6306801183572
 Option 3 ID : 6306801183569
 Option 4 ID : 6306801183571

Status : Answered
 Chosen Option : 3

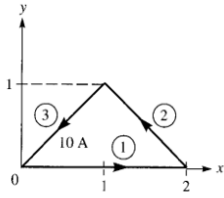
Q.2 The power input to a 3-phase induction motor is 50 kW. Total losses in the stator are 2 kW. Find the mechanical power developed if the motor is running with a slip of 5%.

- Ans**
- 1. 41.3 kW
 - 2. 43.5 kW
 - 3. 47.2 kW
 - 4. 45.6 kW

Question ID : 630680304296
 Option 1 ID : 6306801183745
 Option 2 ID : 6306801183746
 Option 3 ID : 6306801183748
 Option 4 ID : 6306801183747

Status : Answered
 Chosen Option : 4

Q.3



The conducting triangular loop in this figure carries a current of 10 A. Find the magnetic field intensity (H) at (0, 0, 5) due to side 1 of the loop.

Ans

- ✗ 1. $H = -\frac{1}{\pi\sqrt{19}} a_y$ mA/m
- ✗ 2. $H = -\frac{1}{\pi\sqrt{27}} a_y$ mA/m
- ✗ 3. $H = -\frac{1}{\pi\sqrt{23}} a_y$ mA/m
- ✓ 4. $H = -\frac{1}{\pi\sqrt{29}} a_y$ mA/m

Question ID : 630680304264
 Option 1 ID : 6306801183620
 Option 2 ID : 6306801183618
 Option 3 ID : 6306801183619
 Option 4 ID : 6306801183617

Status : Answered

Chosen Option : 3

Q.4 A 500 V shunt motor has armature resistance of .8 Ω and field resistance of 200 Ω . Calculate the back EMF when the output is 8 kW at 80% efficiency.

Ans

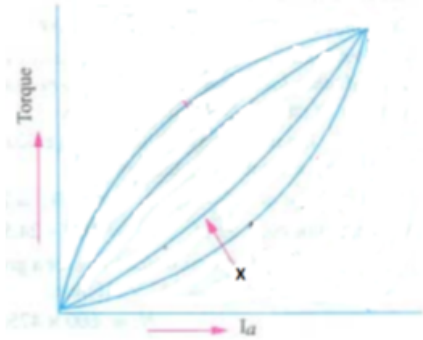
- ✗ 1. 448.6 V
- ✗ 2. 425 V
- ✗ 3. 465.8 V
- ✓ 4. 486 V

Question ID : 630680304290
 Option 1 ID : 6306801183722
 Option 2 ID : 6306801183721
 Option 3 ID : 6306801183723
 Option 4 ID : 6306801183724

Status : Answered

Chosen Option : 3

Q.5



The line marked as x in the figure is torque–armature characteristics of:

- Ans
- 1. an SC shunt motor
 - 2. a DC series motor
 - 3. a DC cumulative compound motor
 - 4. a DC differential compound motor

Question ID : 630680304292
 Option 1 ID : 6306801183730
 Option 2 ID : 6306801183729
 Option 3 ID : 6306801183732
 Option 4 ID : 6306801183731

Status : Answered
 Chosen Option : 3

Q.6 Magnetic field intensity (dH) produced at a point P by the differential current element I dl is given by:

(The angle between the element and the line joining P is α and the distance between P and the element is R)

- Ans
- 1. $dH = \frac{I dl \sin \alpha}{R^2}$
 - 2. $dH = \frac{I dl \sin \alpha}{4\pi R^2}$
 - 3. $dH = \frac{I dl \sin \alpha}{2\pi R^2}$
 - 4. $dH = \frac{I dl \sin \alpha}{4\pi^2 R^2}$

Question ID : 630680304263
 Option 1 ID : 6306801183613
 Option 2 ID : 6306801183615
 Option 3 ID : 6306801183614
 Option 4 ID : 6306801183616

Status : Answered
 Chosen Option : 1

Q.7 What type of synchronous machine produces reactive power and acts as a shunt capacitor?

- Ans
- 1. Under excited
 - 2. Critically excited
 - 3. Half excited
 - 4. Over excited

Question ID : 630680304302

Option 1 ID : 6306801183771

Option 2 ID : 6306801183770

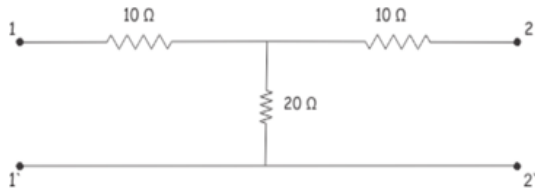
Option 3 ID : 6306801183772

Option 4 ID : 6306801183769

Status : Answered

Chosen Option : 4

Q.8



Find the Z parameters (Z_{11} , Z_{12} , Z_{21} , Z_{22} , respectively) for the above network.

- Ans
- 1. 40Ω , 20Ω , 20Ω , 40Ω
 - 2. 40Ω , 30Ω , 30Ω , 40Ω
 - 3. 30Ω , 20Ω , 20Ω , 30Ω
 - 4. 30Ω , 30Ω , 30Ω , 30Ω

Question ID : 630680304255

Option 1 ID : 6306801183581

Option 2 ID : 6306801183582

Option 3 ID : 6306801183584

Option 4 ID : 6306801183583

Status : Answered

Chosen Option : 3

Q.9 In case of overhead lines for the same resistance, the diameter of aluminium conductor is about _____ times the diameter of copper conductor.

- Ans
- 1. 4.26
 - 2. 3.26
 - 3. 1.26
 - 4. 2.26

Question ID : 630680304233

Option 1 ID : 6306801183496

Option 2 ID : 6306801183495

Option 3 ID : 6306801183493

Option 4 ID : 6306801183494

Status : Answered

Chosen Option : 3

Q.10 A certain JFET has an I_{GSS} of -2 nA for $V_{GS} = -20 \text{ V}$. Determine the input resistance.

- Ans
- 1. $1000 \text{ M}\Omega$
 - 2. $10000 \text{ k}\Omega$
 - 3. $10000 \text{ M}\Omega$
 - 4. $1000 \text{ k}\Omega$

Question ID : 630680304243
Option 1 ID : 6306801183535
Option 2 ID : 6306801183534
Option 3 ID : 6306801183536
Option 4 ID : 6306801183533
Status : Answered
Chosen Option : 3

Q.11 Inter-base resistance of UJT is of the order of _____.

- Ans
- 1. $5 \text{ to } 10 \text{ k}\Omega$
 - 2. $50 \text{ to } 100 \text{ k}\Omega$
 - 3. $500 \text{ to } 1000 \Omega$
 - 4. $50 \text{ to } 100 \Omega$

Question ID : 630680304246
Option 1 ID : 6306801183547
Option 2 ID : 6306801183548
Option 3 ID : 6306801183546
Option 4 ID : 6306801183545
Status : Answered
Chosen Option : 2

Q.12 Which of the following is NOT a valid advantage of single bus bar system?

- Ans
- 1. Very low fault currents
 - 2. Low cost
 - 3. Simple operation
 - 4. Less maintenance

Question ID : 630680304235
Option 1 ID : 6306801183504
Option 2 ID : 6306801183501
Option 3 ID : 6306801183503
Option 4 ID : 6306801183502
Status : Answered
Chosen Option : 1

Q.13 For a Linear Time Invariant (LTI) system, in the absence of the input, the output tends towards zero irrespective of initial conditions. This type of stability is called:

- Ans**
- 1. asymptotic stability
 - 2. selective stability
 - 3. notion stability
 - 4. relative stability

Question ID : 630680304286
Option 1 ID : 6306801183708
Option 2 ID : 6306801183706
Option 3 ID : 6306801183707
Option 4 ID : 6306801183705
Status : Answered
Chosen Option : 1

Q.14 A half-wave rectifier using silicon diode has a secondary EMF of 14.14 V (RMS) with a resistance of 0.15 Ω . The diode has a forward resistance of 0.05 Ω and a threshold voltage of 0.7 V. If the load resistance is 8 Ω , determine the efficiency.

- Ans**
- 1. 40.6%
 - 2. 39.6%
 - 3. 33.83%
 - 4. 32.48%

Question ID : 630680304307
Option 1 ID : 6306801183792
Option 2 ID : 6306801183791
Option 3 ID : 6306801183790
Option 4 ID : 6306801183789
Status : Answered
Chosen Option : 3

Q.15 In a bode plot, if the value of the phase at gain crossover frequency is (-125°) , then phase margin of system is _____.

- Ans**
- 1. 55°
 - 2. -55°
 - 3. -125°
 - 4. 125°

Question ID : 630680304225
Option 1 ID : 6306801183464
Option 2 ID : 6306801183463
Option 3 ID : 6306801183461
Option 4 ID : 6306801183462
Status : Answered
Chosen Option : 1

Q.16 Which of the following theorems states that every square matrix A satisfies its own characteristic equation?

- Ans
- 1. Parseval's theorem
 - 2. Lyapunov theorems
 - 3. Shannon's theorem
 - 4. Cayley–Hamilton theorem

Question ID : 630680304285

Option 1 ID : 6306801183704

Option 2 ID : 6306801183703

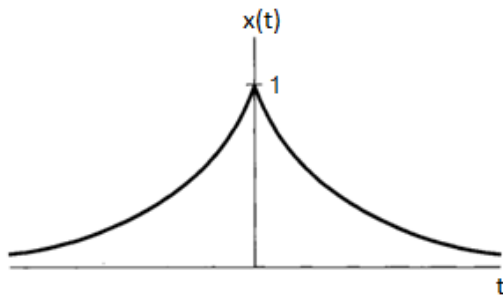
Option 3 ID : 6306801183702

Option 4 ID : 6306801183701

Status : Answered

Chosen Option : 4

Q.17



Fourier transform of the above signal $x(t) = e^{-a|t|}$ is:

- Ans
- 1. $X(j\omega) = \frac{2a}{a + \omega}$
 - 2. $X(j\omega) = \frac{2a}{a^2 + \omega^2}$
 - 3. $X(j\omega) = \frac{a}{a - j\omega}$
 - 4. $X(j\omega) = \frac{a}{a + j\omega}$

Question ID : 630680304272

Option 1 ID : 6306801183651

Option 2 ID : 6306801183652

Option 3 ID : 6306801183649

Option 4 ID : 6306801183650

Status : Answered

Chosen Option : 2

Q.18 If poles are more than zeros in $G(s)$, then the number of root locus branches is equal to the:

- Ans
- 1. number of zeroes
 - 2. number of poles
 - 3. difference between the number of poles and zeroes
 - 4. sum of the number of poles and zeroes

Question ID : 630680304226

Option 1 ID : 6306801183465

Option 2 ID : 6306801183466

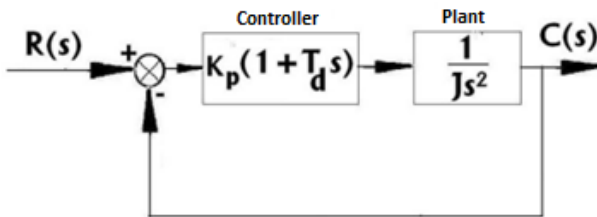
Option 3 ID : 6306801183468

Option 4 ID : 6306801183467

Status : Answered

Chosen Option : 2

Q.19



What will be the natural frequency (ω_n) for the above controller?

- Ans
- 1. $\omega_n = \sqrt{\frac{1}{JK_p}}$
 - 2. $\omega_n = \sqrt{\frac{K_p}{J}}$
 - 3. $\omega_n = \sqrt{JK_p}$
 - 4. $\omega_n = \sqrt{\frac{J}{K_p}}$

Question ID : 630680304281

Option 1 ID : 6306801183688

Option 2 ID : 6306801183686

Option 3 ID : 6306801183685

Option 4 ID : 6306801183687

Status : Answered

Chosen Option : 1

Q.20 If the voltage to be handled is _____, then switchgear equipment is installed outdoor.

- Ans
- 1. below 33 kV
 - 2. beyond 132 kV
 - 3. beyond 66 kV
 - 4. below 11 kV

Question ID : 630680304236
 Option 1 ID : 6306801183507
 Option 2 ID : 6306801183505
 Option 3 ID : 6306801183506
 Option 4 ID : 6306801183508
 Status : Answered
 Chosen Option : 2

Q.21 What will be the effect of increasing load of a synchronous motor while running with normal excitation?

- Ans
- 1. Increase in armature current and increase in power factor.
 - 2. Increase in armature current and decrease in power factor.
 - 3. Decrease in armature current and decrease in power factor.
 - 4. Decrease in armature current and increase in power factor.

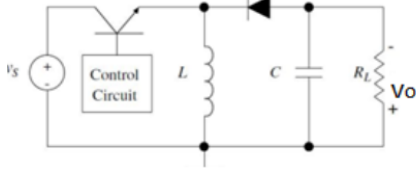
Question ID : 630680304299
 Option 1 ID : 6306801183757
 Option 2 ID : 6306801183759
 Option 3 ID : 6306801183760
 Option 4 ID : 6306801183758
 Status : Answered
 Chosen Option : 2

Q.22 Which of the following properties is NOT true for the curl?

- Ans
- 1.
The divergence of the curl of a vector field vanishes, that is, $\nabla \cdot (\nabla \times A) = 0$
 - 2. The curl of a vector field is another vector field.
 - 3. The curl of a scalar field $\nabla \cdot (\nabla \times V)$, makes sense.
 - 4.
The curl of the gradient of a scalar field vanishes, that is, $(\nabla \times \nabla V) = 0$

Question ID : 630680304262
 Option 1 ID : 6306801183611
 Option 2 ID : 6306801183609
 Option 3 ID : 6306801183610
 Option 4 ID : 6306801183612
 Status : Answered
 Chosen Option : 4

Q.23



The voltage across the capacitor in this buck boost converter is V_C . The differential equation for this variable is:

Ans

✓ 1. $\frac{dV_C}{dt} = \frac{V_O}{CR_L}$

✗ 2. $\frac{dV_C}{dt} = \frac{V_S}{CR_L}$

✗ 3. $\frac{dV_C}{dt} = \frac{V_S}{C}$

✗ 4. $\frac{dV_C}{dt} = \frac{V_O}{R_L}$

Question ID : 630680304316

Option 1 ID : 6306801183825

Option 2 ID : 6306801183826

Option 3 ID : 6306801183828

Option 4 ID : 6306801183827

Status : Answered

Chosen Option : 1

Q.24

1. A system is said to be completely controllable if it is possible to transfer the system state from any initial state $X(t_0)$ to any desired state $X(t)$ in specified finite time by a control vector $u(t)$.
2. A system is said to be completely observable, if every state $X(t_0)$ can be completely identified by measurements of the outputs $y(t)$ over the time interval $(0 \leq t \leq \infty)$.

Read the above two statements and select the correct option.

Ans

✓ 1. Statement 1 is true and Statement 2 is false.

✗ 2. Both Statement 1 and Statement 2 are true.

✗ 3. Both Statement 1 and Statement 2 are false.

✗ 4. Statement 2 is true and Statement 1 is false.

Question ID : 630680304284

Option 1 ID : 6306801183699

Option 2 ID : 6306801183698

Option 3 ID : 6306801183697

Option 4 ID : 6306801183700

Status : Answered

Chosen Option : 2

Q.25 In cascade form realisation of FIR system, _____ adders and _____ multipliers are required for $(M - 1)^{\text{th}}$ order FIR transfer function.

- Ans**
- 1. $(M + 1); (M - 1)$
 - 2. $(M - 1); M$
 - 3. $(M - 1); (M + 1)$
 - 4. $M; (M - 1)$

Question ID : 630680304224

Option 1 ID : 6306801183458

Option 2 ID : 6306801183457

Option 3 ID : 6306801183459

Option 4 ID : 6306801183460

Status : Answered

Chosen Option : 4

Q.26 Study the given statements with reference to single phase induction motor and select the appropriate option.

1. Single-phase induction motor is a self-starting machine.
2. Double-revolving field theory can be used for performance analysis of 1-phase induction motors.

- Ans**
- 1. Statement 1 is true, but statement 2 is false.
 - 2. Both the statements are true.
 - 3. Both the statements are false.
 - 4. Statement 1 is false, but statement 2 is true.

Question ID : 630680304231

Option 1 ID : 6306801183487

Option 2 ID : 6306801183485

Option 3 ID : 6306801183486

Option 4 ID : 6306801183488

Status : Answered

Chosen Option : 4

Q.27 Which of the following is NOT a method of computation of linear convolution?

- Ans**
- 1. Multiplication method
 - 2. Graphical method
 - 3. Tabulation method
 - 4. Substitution method

Question ID : 630680304223

Option 1 ID : 6306801183456

Option 2 ID : 6306801183453

Option 3 ID : 6306801183454

Option 4 ID : 6306801183455

Status : Answered

Chosen Option : 1

Q.28 The layers in the middle layer of artificial neural networks are known as:

- Ans
- 1. security layers
 - 2. control layers
 - 3. hidden layers
 - 4. process layers

Question ID : 630680304325
Option 1 ID : 6306801183864
Option 2 ID : 6306801183861
Option 3 ID : 6306801183862
Option 4 ID : 6306801183863
Status : Answered
Chosen Option : 3

Q.29 6 dB corresponds to a frequency response with magnitude equal to:

- Ans
- 1. 2
 - 2. 3
 - 3. 1
 - 4. 0

Question ID : 630680304274
Option 1 ID : 6306801183659
Option 2 ID : 6306801183660
Option 3 ID : 6306801183658
Option 4 ID : 6306801183657
Status : Answered
Chosen Option : 1

- Q.30
1. Artificial neural networks play an important role in speech recognition.
 2. Artificial neural networks are used for handwritten character recognition.

Read the above statements and select the correct option for artificial neural networks.

- Ans
- 1. Statement 1 is true and Statement 2 is false.
 - 2. Both Statement 1 and Statement 2 are false.
 - 3. Statement 2 is true and Statement 1 is false.
 - 4. Both Statement 1 and Statement 2 are true.

Question ID : 630680304326
Option 1 ID : 6306801183867
Option 2 ID : 6306801183865
Option 3 ID : 6306801183868
Option 4 ID : 6306801183866
Status : Answered
Chosen Option : 4

Q.31 How many unconditional jump instructions are there in an 8051 microcontroller?

- Ans 1. Two
 2. Four
 3. Three
 4. One

Question ID : 630680304251
 Option 1 ID : 6306801183566
 Option 2 ID : 6306801183568
 Option 3 ID : 6306801183567
 Option 4 ID : 6306801183565
 Status : Answered
 Chosen Option : 3

Q.32 The Laplace transform of $[e^{-at} \cos \omega_0 t] u(t)$ is:

- Ans 1. $\frac{a}{(s+a)^2 + \omega_0^2}$
 2. $\frac{s}{(s+a)^2 + \omega_0^2}$
 3. $\frac{s+a}{(s+a)^2 + \omega_0^2}$
 4. $\frac{\omega_0}{(s+a)^2 + \omega_0^2}$

Question ID : 630680304277
 Option 1 ID : 6306801183670
 Option 2 ID : 6306801183669
 Option 3 ID : 6306801183672
 Option 4 ID : 6306801183671
 Status : Answered
 Chosen Option : 1

Q.33 How many T-states can be there in a machine cycle in 8085 microprocessors?

- Ans 1. 1 to 2
 2. 3 to 6
 3. 8 to 16
 4. 16 to 32

Question ID : 630680304311
 Option 1 ID : 6306801183805
 Option 2 ID : 6306801183806
 Option 3 ID : 6306801183807
 Option 4 ID : 6306801183808
 Status : Answered
 Chosen Option : 3

Q.34 Which of the following flags is used for BCD arithmetic in the architecture of 8085 microprocessor?

- Ans
- 1. Z flag
 - 2. AC flag
 - 3. S flag
 - 4. CY flag

Question ID : 630680304312
Option 1 ID : 6306801183812
Option 2 ID : 6306801183809
Option 3 ID : 6306801183811
Option 4 ID : 6306801183810
Status : Answered
Chosen Option : 1

Q.35 The apparent power is the product of the _____ values of voltage and current.

- Ans
- 1. peak to peak
 - 2. average
 - 3. RMS
 - 4. peak

Question ID : 630680304210
Option 1 ID : 6306801183404
Option 2 ID : 6306801183403
Option 3 ID : 6306801183401
Option 4 ID : 6306801183402
Status : Answered
Chosen Option : 3

Q.36 Proper application of which of the following theorems to Coulomb's law results in Gauss's law?

- Ans
- 1. Stokes's theorem
 - 2. Divergence theorem
 - 3. Helmholtz's theorem
 - 4. Uniqueness theorem

Question ID : 630680304261
Option 1 ID : 6306801183606
Option 2 ID : 6306801183605
Option 3 ID : 6306801183608
Option 4 ID : 6306801183607
Status : Answered
Chosen Option : 2

Q.37 Network capacity in neural network is defined as:

- Ans
- 1. the total number of nodes in the network.
 - 2. the total number of inputs in the network.
 - 3. the total number of disturbances in the network.
 - 4. the number of patterns that can be stored and recalled in the network.

Question ID : 630680304250
Option 1 ID : 6306801183562
Option 2 ID : 6306801183561
Option 3 ID : 6306801183563
Option 4 ID : 6306801183564
Status : Answered
Chosen Option : 4

Q.38 A cycloconverter is basically _____.

- Ans
- 1. a controlled rectifier
 - 2. a multilevel inverter
 - 3. a DC-DC transformer
 - 4. a one-stage frequency changer

Question ID : 630680304245
Option 1 ID : 6306801183543
Option 2 ID : 6306801183544
Option 3 ID : 6306801183542
Option 4 ID : 6306801183541
Status : Answered
Chosen Option : 4

Q.39 Which of the following methods gives only absolute stability of the system?

- Ans
- 1. Bode plot
 - 2. Root locus
 - 3. R-H criteria
 - 4. Nyquist plot

Question ID : 630680304227
Option 1 ID : 6306801183472
Option 2 ID : 6306801183469
Option 3 ID : 6306801183470
Option 4 ID : 6306801183471
Status : Answered
Chosen Option : 1

Q.40 A network has 40 number of total buses, of which 12 are voltage buses and 5 are generator buses. Find the size of the Jacobian matrix.

- Ans**
- 1. 46×46
 - 2. 23×23
 - 3. 63×63
 - 4. 21×21

Question ID : 630680304306
Option 1 ID : 6306801183787
Option 2 ID : 6306801183786
Option 3 ID : 6306801183788
Option 4 ID : 6306801183785
Status : Answered
Chosen Option : 2

Q.41 An airline has characteristic impedance of 70Ω and phase constant of 3 rad/m at 100 MHz . Calculate the capacitance per metre of the line.

- Ans**
- 1. 68.2 pF/m
 - 2. 58.4 pF/m
 - 3. 28.6 pF/m
 - 4. 45.8 pF/m

Question ID : 630680304268
Option 1 ID : 6306801183636
Option 2 ID : 6306801183635
Option 3 ID : 6306801183633
Option 4 ID : 6306801183634
Status : Answered
Chosen Option : 2

Q.42

1. Power MOSFETs are majority carrier devices.
2. Power MOSFETs cause inferior conduction characteristics as the voltage rating is increased above 200 V .

Read the above statements and select the correct option.

- Ans**
- 1. Statement 2 is true and Statement 1 is false.
 - 2. Both Statement 1 and Statement 2 are true.
 - 3. Both Statement 1 and Statement 2 are false.
 - 4. Statement 1 is true and Statement 2 is false.

Question ID : 630680304319
Option 1 ID : 6306801183839
Option 2 ID : 6306801183840
Option 3 ID : 6306801183837
Option 4 ID : 6306801183838
Status : Answered
Chosen Option : 2

Q.43 Calculate the number of stages for a multiplier or a cascaded circuit with frequency = 50 Hz, capacitance = 0.2 μ F, voltage = 100 kV and current = 10 mA.

- Ans**
- 1. 30
 - 2. 40
 - 3. 20
 - 4. 10

Question ID : 630680304323
Option 1 ID : 6306801183855
Option 2 ID : 6306801183856
Option 3 ID : 6306801183854
Option 4 ID : 6306801183853
Status : Answered
Chosen Option : 4

Q.44 The equivalent inductances of two coils of 3 H and 5 H in series aiding flux with mutual inductance of 2 H is:

- Ans**
- 1. 8 H
 - 2. 12 H
 - 3. 4 H
 - 4. 10 H

Question ID : 630680304216
Option 1 ID : 6306801183427
Option 2 ID : 6306801183426
Option 3 ID : 6306801183428
Option 4 ID : 6306801183425
Status : Answered
Chosen Option : 2

Q.45 A discrete time real valued signal is said to be symmetric if:

- Ans**
- 1. $X(n) = X(-n)$
 - 2. $X(n) = X(n - N)$
 - 3. $X(n) = -X(n)$
 - 4. $X(n) = X(n + N)$

Question ID : 630680304221
Option 1 ID : 6306801183446
Option 2 ID : 6306801183448
Option 3 ID : 6306801183445
Option 4 ID : 6306801183447
Status : Answered
Chosen Option : 1

Q.46 An N-channel E-MOSFET has the following parameters:

$$I_{D(ON)} = 5 \text{ mA at } V_{GS} = 10 \text{ V and } V_{GS(th)} = 5 \text{ V}$$

Calculate its drain current for $V_{GS} = 8 \text{ V}$.

- Ans
- 1. 3.2 mA
 - 2. 4 mA
 - 3. 2.6 mA
 - 4. 1.8 mA

Question ID : 630680304308

Option 1 ID : 6306801183795

Option 2 ID : 6306801183796

Option 3 ID : 6306801183794

Option 4 ID : 6306801183793

Status : Answered

Chosen Option : 2

Q.47 The discrete-time Fourier transform is always periodic in ω with period:

- Ans
- 1. 4π
 - 2. 2π
 - 3. π
 - 4. $\pi/2$

Question ID : 630680304273

Option 1 ID : 6306801183656

Option 2 ID : 6306801183655

Option 3 ID : 6306801183654

Option 4 ID : 6306801183653

Status : Answered

Chosen Option : 2

Q.48 In an 8085 processor, which bit of flag register is reserved for Auxiliary Carry flag?

- Ans
- 1. Bit D7
 - 2. Bit D4
 - 3. Bit D6
 - 4. Bit D2

Question ID : 630680304244

Option 1 ID : 6306801183539

Option 2 ID : 6306801183537

Option 3 ID : 6306801183538

Option 4 ID : 6306801183540

Status : Answered

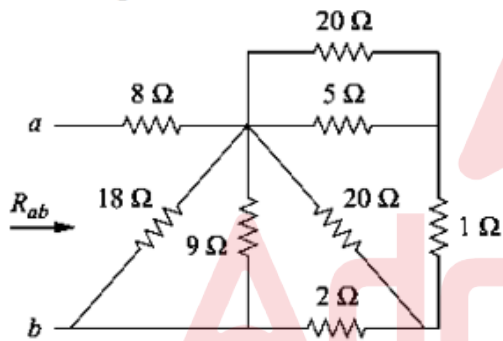
Chosen Option : 3

Q.49 Laplace transform of a unit parabolic function occurring at $t = 0$ is given by _____.

- Ans
- ✓ 1. $\frac{1}{s^3}$
 - ✗ 2. 1
 - ✗ 3. $\frac{1}{s^2}$
 - ✗ 4. $\frac{1}{s}$

Question ID : 630680304222
 Option 1 ID : 6306801183452
 Option 2 ID : 6306801183449
 Option 3 ID : 6306801183451
 Option 4 ID : 6306801183450
 Status : Answered
 Chosen Option : 1

Q.50 Find 'Req' in the following circuit.



- Ans
- ✗ 1. 18 Ω
 - ✓ 2. 11 Ω
 - ✗ 3. 26 Ω
 - ✗ 4. 14 Ω

Question ID : 630680304208
 Option 1 ID : 6306801183395
 Option 2 ID : 6306801183393
 Option 3 ID : 6306801183396
 Option 4 ID : 6306801183394
 Status : Answered
 Chosen Option : 2

Q.51 In practice, the choice of a liquid dielectric for a given application is made primarily on the basis of its:

- Ans
- 1. surface tension
 - 2. solubility
 - 3. viscosity
 - 4. chemical stability

Question ID : 630680304322
Option 1 ID : 6306801183850
Option 2 ID : 6306801183851
Option 3 ID : 6306801183852
Option 4 ID : 6306801183849
Status : Answered
Chosen Option : 2

Q.52 Z transform of continuous unit step function is:

- Ans
- 1. $X(t) = \frac{z}{1-z}$
 - 2. $X(t) = \frac{1}{1-z}$
 - 3. $X(t) = \frac{1}{z-1}$
 - 4. $X(t) = \frac{z}{z-1}$

Question ID : 630680304270
Option 1 ID : 6306801183644
Option 2 ID : 6306801183642
Option 3 ID : 6306801183641
Option 4 ID : 6306801183643
Status : Answered
Chosen Option : 4

Q.53 Read the following statements and select the correct option pertaining to Z-transform.

Statement1: Inverse Z-transforms can be obtained by partial fraction expansion methods.

Statement2: Z-transform can be used for the solution of linear difference equations.

- Ans
- 1. Both Statement 1 and Statement 2 are true.
 - 2. Statement 1 is true and Statement 2 is false.
 - 3. Both Statement 1 and Statement 2 are false.
 - 4. Statement 2 is true and Statement 1 is false.

Question ID : 630680304271
Option 1 ID : 6306801183646
Option 2 ID : 6306801183647
Option 3 ID : 6306801183645
Option 4 ID : 6306801183648
Status : Answered
Chosen Option : 1

Q.54 Which of the following methods is usually used to determine the efficiency of a traction motor?

- Ans
- ✓ 1. Field's test
 - ✗ 2. Acceleration test
 - ✗ 3. Swinburn's test
 - ✗ 4. Retardation test

Question ID : 630680304295
 Option 1 ID : 6306801183743
 Option 2 ID : 6306801183741
 Option 3 ID : 6306801183744
 Option 4 ID : 6306801183742
 Status : Answered
 Chosen Option : 4

Q.55 A magnetic circuit having coil inductance L is dependent on x. Calculate the force.

- Ans
- ✓ 1. $-\frac{1}{2} i^2 \frac{dL}{dx}$
 - ✗ 2. $L^2 \frac{dL}{dx}$
 - ✗ 3. $\frac{1}{2} L^2 \frac{dL}{dx}$
 - ✗ 4. $-i^2 \frac{dL}{dx}$

Question ID : 630680304288
 Option 1 ID : 6306801183714
 Option 2 ID : 6306801183716
 Option 3 ID : 6306801183713
 Option 4 ID : 6306801183715
 Status : Answered
 Chosen Option : 3

Q.56 During the message recovery, it is observed that the terms are overlapping. The signal is:

- Ans
- ✗ 1. sampled at twice the Nyquist rate
 - ✗ 2. over sampled
 - ✗ 3. sampled at the Nyquist rate
 - ✓ 4. under sampled

Question ID : 630680304276
 Option 1 ID : 6306801183668
 Option 2 ID : 6306801183666
 Option 3 ID : 6306801183667
 Option 4 ID : 6306801183665
 Status : Answered
 Chosen Option : 4

Q.57 When corona is present on the conductors in EHV lines, it generates audible noise which is especially high during foul weather. The noise frequency range is:

- Ans**
- 1. from a very low frequency to about 20 KHz.
 - 2. from a very low frequency to about 10 KHz.
 - 3. from a very low frequency to about 5 KHz.
 - 4. from a very low frequency to about 15 KHz.

Question ID : 630680304324
Option 1 ID : 6306801183860
Option 2 ID : 6306801183858
Option 3 ID : 6306801183857
Option 4 ID : 6306801183859
Status : Answered
Chosen Option : 2

Q.58 In a magnetic circuit, a current of 5 A passes through the coil having 300 uniform turns. Find total flux if the reluctance of the magnetic path is 30×10^5 AT/Wb.

- Ans**
- 1. 6.0 mWb
 - 2. 0.6 mWb
 - 3. 0.5 mWb
 - 4. 5.0 mWb

Question ID : 630680304217
Option 1 ID : 6306801183432
Option 2 ID : 6306801183430
Option 3 ID : 6306801183429
Option 4 ID : 6306801183431
Status : Answered
Chosen Option : 3

Q.59 Which of the following materials is commonly used for HV insulation?

- Ans**
- 1. Rubber
 - 2. Paper-oil insulation
 - 3. PVC
 - 4. Polyester resin

Question ID : 630680304248
Option 1 ID : 6306801183554
Option 2 ID : 6306801183556
Option 3 ID : 6306801183555
Option 4 ID : 6306801183553
Status : Answered
Chosen Option : 2

Q.60 What should be the value of ω for a low pass filter to have magnitude of transfer function as 0.707?

- Ans
- 1. 0
 - 2. Infinity
 - 3. CR
 - 4. $1/CR$

Question ID : 630680304256
Option 1 ID : 6306801183585
Option 2 ID : 6306801183586
Option 3 ID : 6306801183587
Option 4 ID : 6306801183588
Status : Answered
Chosen Option : 4

Q.61 What number of string of insulators is used for 132 kV transmission if a suspension type insulator is used for overhead lines?

- Ans
- 1. 12
 - 2. 4
 - 3. 2
 - 4. 6

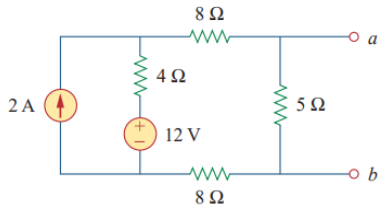
Question ID : 630680304303
Option 1 ID : 6306801183776
Option 2 ID : 6306801183774
Option 3 ID : 6306801183773
Option 4 ID : 6306801183775
Status : Answered
Chosen Option : 1

Q.62 Cultural Algorithms (CAs) are dual inheritance systems that consist of:

- Ans
- 1. a social population and a belief space
 - 2. an arithmetic population and a social space
 - 3. a logic population and an arithmetic space
 - 4. a social population and a logic space

Question ID : 630680304321
Option 1 ID : 6306801183848
Option 2 ID : 6306801183847
Option 3 ID : 6306801183846
Option 4 ID : 6306801183845
Status : Answered
Chosen Option : 4

Q.63 Find I_N and R_N , if the following network is replaced by Norton's equivalent between terminals 'a' and 'b'.



- Ans
- ✗ 1. $I_N = 2\text{ A}$, $R_N = 4\ \Omega$
 - ✗ 2. $I_N = 5\text{ A}$, $R_N = 5\ \Omega$
 - ✗ 3. $I_N = 2\text{ A}$, $R_N = 2\ \Omega$
 - ✓ 4. $I_N = 1\text{ A}$, $R_N = 4\ \Omega$

Question ID : 630680304212

Option 1 ID : 6306801183409

Option 2 ID : 6306801183411

Option 3 ID : 6306801183412

Option 4 ID : 6306801183410

Status : Answered

Chosen Option : 4

Q.64 Which of the following tests is performed for testing of DC shunt motors?

- Ans
- ✓ 1. Swinburne's test
 - ✗ 2. IFT test
 - ✗ 3. Blocked rotor test
 - ✗ 4. Short circuit test

Question ID : 630680304230

Option 1 ID : 6306801183483

Option 2 ID : 6306801183484

Option 3 ID : 6306801183481

Option 4 ID : 6306801183482

Status : Answered

Chosen Option : 1

Q.65 A stranded conductor has 3 layers of wire. Find the diameter of the conductor if the diameter of each strand is 5 mm.

- Ans
- ✗ 1. 40 mm
 - ✗ 2. 30 mm
 - ✗ 3. 25 mm
 - ✓ 4. 35 mm

Question ID : 630680304249

Option 1 ID : 6306801183560

Option 2 ID : 6306801183558

Option 3 ID : 6306801183557

Option 4 ID : 6306801183559

Status : Answered

Chosen Option : 4

Q.66 The electric field intensity (E) at point r due to a point charge (Q) located at r' is:

Ans

✗ 1. $E = \frac{Q (r' - r)}{4\pi\epsilon_0 |r' - r|^2}$

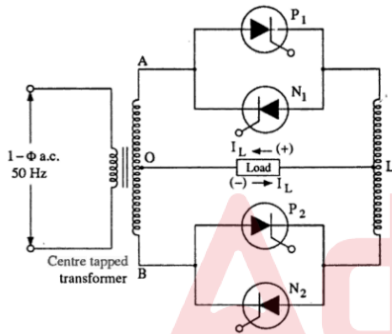
✓ 2. $E = \frac{Q (r - r')}{4\pi\epsilon_0 |r - r'|^3}$

✗ 3. $E = \frac{Q (r' - r)}{4\pi\epsilon_0 |r' - r|^3}$

✗ 4. $E = \frac{Q (r - r')}{4\pi\epsilon_0 |r - r'|^2}$

Question ID : 630680304259
 Option 1 ID : 6306801183600
 Option 2 ID : 6306801183597
 Option 3 ID : 6306801183599
 Option 4 ID : 6306801183598
 Status : Answered
 Chosen Option : 2

Q.67



What should be the triggering sequence in the given single phase cycloconverter circuit to obtain one-third of supply frequency?

Ans

✗ 1. P₁P₁P₂ and N₁N₁N₂.

✗ 2. P₂P₂P₁ and N₂N₂N₁.

✓ 3. P₁P₂P₁ and N₁N₂N₁.

✗ 4. P₂P₁P₂ and N₂N₁N₂.

Question ID : 630680304314
 Option 1 ID : 6306801183818
 Option 2 ID : 6306801183819
 Option 3 ID : 6306801183817
 Option 4 ID : 6306801183820
 Status : Answered
 Chosen Option : 3

Q.68 For a feedback control system of type 2, the steady state error for a ramp input is:

- Ans
- 1. infinite
 - 2. zero
 - 3. unity
 - 4. more than unity but not infinite

Question ID : 630680304228
Option 1 ID : 6306801183474
Option 2 ID : 6306801183473
Option 3 ID : 6306801183475
Option 4 ID : 6306801183476
Status : Answered
Chosen Option : 4

Q.69 In case of electromagnetic waves, the electric field will be perpendicular to _____.

- Ans
- 1. magnetic field intensity only
 - 2. wave direction as well as magnetic field intensity
 - 3. neither wave direction nor magnetic field intensity
 - 4. wave direction only

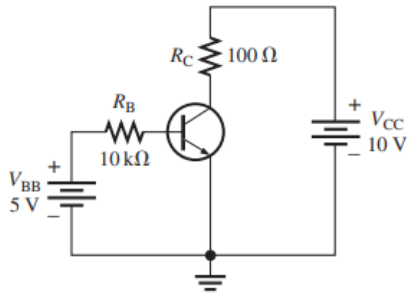
Question ID : 630680304214
Option 1 ID : 6306801183418
Option 2 ID : 6306801183419
Option 3 ID : 6306801183420
Option 4 ID : 6306801183417
Status : Answered
Chosen Option : 2

Q.70 What is the surge impedance of a transmission line where L is the inductance and C is the capacitance per unit length of the line?

- Ans
- 1. \sqrt{LC}
 - 2. $\sqrt{\frac{L}{C}}$
 - 3. $\sqrt{\frac{C}{L}}$
 - 4. $\sqrt{\frac{1}{LC}}$

Question ID : 630680304301
Option 1 ID : 6306801183768
Option 2 ID : 6306801183765
Option 3 ID : 6306801183766
Option 4 ID : 6306801183767
Status : Answered
Chosen Option : 3

Q.71 For the following circuit, $V_{BE} = 0.7 \text{ V}$ and β_{dc} is 150. Calculate the value of I_E .



- Ans
- 1. 64.5 mA
 - 2. 64 mA
 - 3. 74.9 mA
 - 4. 64.9 mA

Question ID : 630680304242
 Option 1 ID : 6306801183530
 Option 2 ID : 6306801183529
 Option 3 ID : 6306801183532
 Option 4 ID : 6306801183531
 Status : Answered
 Chosen Option : 4

Q.72 In the design of digital filters, we often choose a filter with a specified magnitude characteristic that has:

- Ans
- 1. the shortest duration
 - 2. medium duration
 - 3. the largest duration
 - 4. between medium to the largest duration

Question ID : 630680304278
 Option 1 ID : 6306801183673
 Option 2 ID : 6306801183674
 Option 3 ID : 6306801183676
 Option 4 ID : 6306801183675
 Status : Answered
 Chosen Option : 4

Q.73 CISC is the acronym used for:

- Ans
- 1. Complementary Instruction Set Combining.
 - 2. Complementary Instruction Set Computing.
 - 3. Complex Instruction Set Computing.
 - 4. Complex Instruction Set Combining.

Question ID : 630680304327
 Option 1 ID : 6306801183870
 Option 2 ID : 6306801183869
 Option 3 ID : 6306801183872
 Option 4 ID : 6306801183871
 Status : Answered
 Chosen Option : 2

Q.74 A long shunt compound generator delivers a load current of 50 A and 500 V. It has armature, series field and shunt field resistance of 0.04, 0.025 Ω and 125 Ω , respectively. If the total voltage drop in brushes is 3 V, find the generated voltage.

- Ans**
- ✓ 1. 506.51 V
 - ✗ 2. 516.48 V
 - ✗ 3. 520.66 V
 - ✗ 4. 509.36 V

Question ID : 630680304289
Option 1 ID : 6306801183717
Option 2 ID : 6306801183719
Option 3 ID : 6306801183720
Option 4 ID : 6306801183718
Status : Answered
Chosen Option : 2

Q.75 A DC series motor takes 40 A at 250 V and 955 rpm. The armature and field resistance are 0.3 Ω and 0.2 Ω , respectively. What will be the torque developed in the armature?

- Ans**
- ✓ 1. 92 N-m
 - ✗ 2. 132 N-m
 - ✗ 3. 122 N-m
 - ✗ 4. 72 N-m

Question ID : 630680304291
Option 1 ID : 6306801183726
Option 2 ID : 6306801183728
Option 3 ID : 6306801183727
Option 4 ID : 6306801183725
Status : Answered
Chosen Option : 1

Q.76 Which of the following has a dimension?

- Ans**
- ✓ 1. Dielectric strength
 - ✗ 2. Relative permittivity
 - ✗ 3. Electric susceptibility
 - ✗ 4. Relative permeability

Question ID : 630680304269
Option 1 ID : 6306801183640
Option 2 ID : 6306801183638
Option 3 ID : 6306801183637
Option 4 ID : 6306801183639
Status : Answered
Chosen Option : 1

Q.77 The average value of a full-wave rectified voltage with a peak value of 66 V is:

- Ans
- 1. 66 V
 - 2. 42 V
 - 3. 33 V
 - 4. 88 V

Question ID : 630680304241
Option 1 ID : 6306801183527
Option 2 ID : 6306801183526
Option 3 ID : 6306801183525
Option 4 ID : 6306801183528
Status : Answered
Chosen Option : 2

Q.78 Which of the following is NOT an asymmetrical fault?

- Ans
- 1. 3-phase fault
 - 2. Line-to-line fault
 - 3. Double line-to-ground fault
 - 4. Line-to-ground fault

Question ID : 630680304300
Option 1 ID : 6306801183764
Option 2 ID : 6306801183762
Option 3 ID : 6306801183763
Option 4 ID : 6306801183761
Status : Answered
Chosen Option : 1

Q.79 Find the energy stored by a coil of inductance 20 mH and carrying a current of 1.5A.

- Ans
- 1. 450 mJ
 - 2. 22.5 mJ
 - 3. 45 mJ
 - 4. 225 mJ

Question ID : 630680304218
Option 1 ID : 6306801183433
Option 2 ID : 6306801183436
Option 3 ID : 6306801183435
Option 4 ID : 6306801183434
Status : Answered
Chosen Option : 2

Q.80 Consider the sinusoidal signal $x(t) = \cos\left(\frac{\omega_s}{2} t + \phi\right)$. Suppose this signal is sampled at ω_s frequency. If this impulse-sampled signal is applied as the input to an ideal lowpass filter with cutoff frequency $\omega_s/2$, the resulting output is:

- Ans**
- ✓ 1. $x_r(t) = (\cos \phi) \cos\left(\frac{\omega_s}{2} t\right)$
 - ✗ 2. $x_r(t) = (\sin \phi) \cos\left(\frac{\omega_s}{2} t\right)$
 - ✗ 3. $x_r(t) = (\sin \phi) \sin\left(\frac{\omega_s}{2} t\right)$
 - ✗ 4. $x_r(t) = (\cos \phi) \sin\left(\frac{\omega_s}{2} t\right)$

Question ID : 630680304275
 Option 1 ID : 6306801183661
 Option 2 ID : 6306801183662
 Option 3 ID : 6306801183664
 Option 4 ID : 6306801183663
 Status : Answered
 Chosen Option : 1

Q.81 Which of the following are true characteristics of Insulated Gate Bipolar Transistors (IGBTs)?

- Ans**
- ✗ 1. Inferior on-state characteristics and low switching speed
 - ✗ 2. Superior on-state characteristics but low switching speed
 - ✓ 3. Superior on-state characteristics and good switching speed
 - ✗ 4. Inferior on-state characteristics but good switching speed

Question ID : 630680304318
 Option 1 ID : 6306801183836
 Option 2 ID : 6306801183834
 Option 3 ID : 6306801183835
 Option 4 ID : 6306801183833
 Status : Answered
 Chosen Option : 3

Q.82 A complex network consisting of a number of parallel branches, where each parallel branch consists of voltage source with series impedance, can be replaced with equivalent circuit consisting of one voltage source in series with equivalent impedance. This is:

- Ans**
- ✗ 1. the Compensation theorem.
 - ✗ 2. Tellegen's theorem.
 - ✓ 3. Milliman's theorem.
 - ✗ 4. the Reciprocity theorem.

Question ID : 630680304257
 Option 1 ID : 6306801183590
 Option 2 ID : 6306801183592
 Option 3 ID : 6306801183589
 Option 4 ID : 6306801183591
 Status : Answered
 Chosen Option : 3

Q.83 If a two-port network is represented with h-parameters, then the condition for reciprocity is _____.

- Ans
- 1. $h_{11} = h_{22}$
 - 2. $h_{12} = -h_{21}$
 - 3. $h_{12} = h_{21}$
 - 4. $h_{11} = -h_{22}$

Question ID : 630680304213
 Option 1 ID : 6306801183413
 Option 2 ID : 6306801183416
 Option 3 ID : 6306801183414
 Option 4 ID : 6306801183415
 Status : Answered
 Chosen Option : 2

Q.84 Each search parameter (p_S) in Fuzzy algorithms is specified by:

p_g = the genetic parameter,

l = the number of bits in the genetic parameter,

R = a specified parameter range, and

O = a specified offset

- Ans
- 1. $p_S = \frac{p_g}{2^{O-1}} R + l$
 - 2. $p_S = \frac{p_g}{2^{l-1}} O + R$
 - 3. $p_S = \frac{p_g}{2^{l-1}} R + O$
 - 4. $p_S = \frac{p_g}{2^{R-1}} l + O$

Question ID : 630680304320
 Option 1 ID : 6306801183844
 Option 2 ID : 6306801183842
 Option 3 ID : 6306801183841
 Option 4 ID : 6306801183843
 Status : Answered
 Chosen Option : 4

Q.85 A 3-phase 400/200 V, Y-Y connected wound rotor induction motor has 0.06Ω rotor resistance and 0.3Ω stand still reactance per phase. Find the additional resistance required in the rotor circuit to make the starting torque equal to the maximum torque of the motor.

- Ans**
- 1. 0.18Ω
 - 2. 0.36Ω
 - 3. 0.30Ω
 - 4. 0.24Ω

Question ID : 630680304232

Option 1 ID : 6306801183492

Option 2 ID : 6306801183489

Option 3 ID : 6306801183490

Option 4 ID : 6306801183491

Status : Answered

Chosen Option : 4

Q.86 Find the relation between output voltage (V_O) and input voltage (V_{iN}) for a Boost converter, where d is the duty ratio.

- Ans**
- 1. $V_O = V_{iN} * \frac{d}{1-d}$
 - 2. $V_O = V_{iN} * \frac{1}{d-1}$
 - 3. $V_O = V_{iN} * \frac{d}{d-1}$
 - 4. $V_O = V_{iN} * \frac{1}{1-d}$

Question ID : 630680304315

Option 1 ID : 6306801183822

Option 2 ID : 6306801183824

Option 3 ID : 6306801183821

Option 4 ID : 6306801183823

Status : Answered

Chosen Option : 4

Q.87 Which of the following are valid fuzzy operators defined in fuzzy set theory?

- Ans**
- 1. AND, OR
 - 2. OR, NOT
 - 3. AND, OR, NOT
 - 4. AND, NOT

Question ID : 630680304247

Option 1 ID : 6306801183549

Option 2 ID : 6306801183550

Option 3 ID : 6306801183552

Option 4 ID : 6306801183551

Status : Answered

Chosen Option : 1

Q.88 Which of the following is NOT a characteristic of ideal transformer?

- Ans
- 1. Zero resistance of windings
 - 2. No core loss
 - 3. No leakage flux
 - 4. Zero permeability

Question ID : 630680304229
Option 1 ID : 6306801183477
Option 2 ID : 6306801183479
Option 3 ID : 6306801183478
Option 4 ID : 6306801183480
Status : Answered
Chosen Option : 4

Q.89 What will be the damping ratio (ξ) in a series RLC circuit excited by DC source?

- Ans
- 1. $(\sqrt{LC})/(LR)$
 - 2. $(RL)/(\sqrt{LC})$
 - 3. $(\sqrt{LC})/(RL)$
 - 4. $(LR)/(\sqrt{LC})$

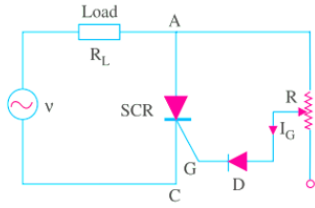
Question ID : 630680304253
Option 1 ID : 6306801183576
Option 2 ID : 6306801183574
Option 3 ID : 6306801183575
Option 4 ID : 6306801183573
Status : Answered
Chosen Option : 2

Q.90 Find the percentage reactance for an element if the full load current is 50 A and the short circuit current is 250 A, when only that element is in the circuit.

- Ans
- 1. 30%
 - 2. 40%
 - 3. 80%
 - 4. 20%

Question ID : 630680304237
Option 1 ID : 6306801183510
Option 2 ID : 6306801183511
Option 3 ID : 6306801183512
Option 4 ID : 6306801183509
Status : Answered
Chosen Option : 4

Q.91

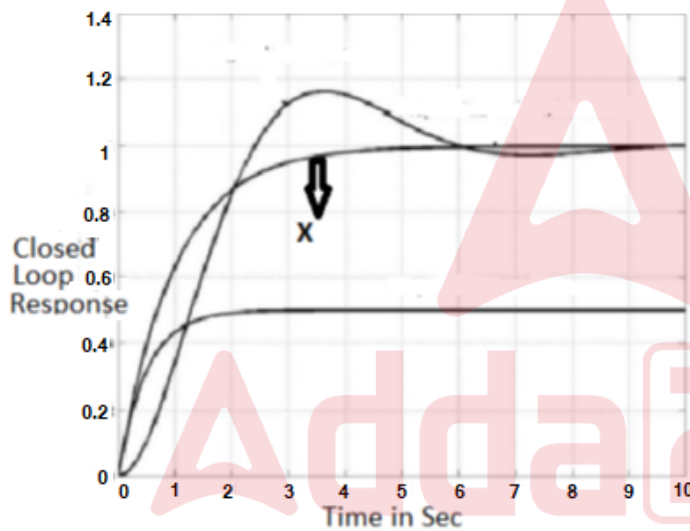


The circuit is connected to an AC supply $v = 50 \sin \theta$ and $R_L = 100 \Omega$. Gate current is $100 \mu\text{A}$ and $V_G = 0.5 \text{ V}$. Determine the range of adjustment of R for the SCR to be triggered between 30° and 90° . Take $V_D = 0.7 \text{ V}$.

- Ans
- ✓ 1. $237.9 \text{ k}\Omega$ to $487.9 \text{ k}\Omega$
 - ✗ 2. $587.5 \text{ k}\Omega$ to $856.5 \text{ k}\Omega$
 - ✗ 3. $396.6 \text{ k}\Omega$ to $612.4 \text{ k}\Omega$
 - ✗ 4. $187.6 \text{ k}\Omega$ to $367.6 \text{ k}\Omega$

Question ID : 630680304313
 Option 1 ID : 6306801183814
 Option 2 ID : 6306801183816
 Option 3 ID : 6306801183815
 Option 4 ID : 6306801183813
 Status : Answered
 Chosen Option : 3

Q.92



The line marked as X is the closed loop response of:

- Ans
- ✗ 1. a P controller
 - ✗ 2. a PD controller
 - ✓ 3. a PI controller
 - ✗ 4. an I controller

Question ID : 630680304282
 Option 1 ID : 6306801183689
 Option 2 ID : 6306801183692
 Option 3 ID : 6306801183691
 Option 4 ID : 6306801183690
 Status : Answered
 Chosen Option : 1

Q.93 Which of the following is most similar to the principle of operation of a 3-phase induction motor?

- Ans
- ✓ 1. Transformer with a shorted secondary
 - ✗ 2. Synchronous motor
 - ✗ 3. Repulsion motor
 - ✗ 4. Auto transformer

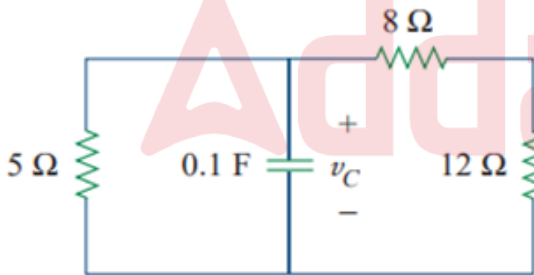
Question ID : 630680304297
 Option 1 ID : 6306801183751
 Option 2 ID : 6306801183749
 Option 3 ID : 6306801183750
 Option 4 ID : 6306801183752
 Status : Answered
 Chosen Option : 1

Q.94 Which of the following plots is NOT used in frequency response analysis?

- Ans
- ✗ 1. Magnitude versus phase angle plot
 - ✗ 2. Polar plot
 - ✓ 3. Nyquist plot
 - ✗ 4. Bode plot

Question ID : 630680304283
 Option 1 ID : 6306801183695
 Option 2 ID : 6306801183693
 Option 3 ID : 6306801183696
 Option 4 ID : 6306801183694
 Status : Answered
 Chosen Option : 2

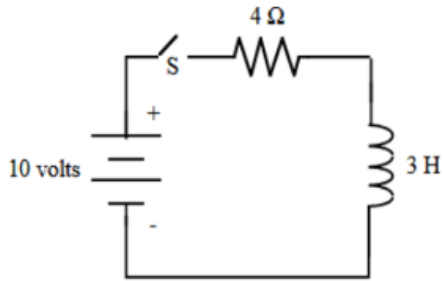
Q.95 Find the time constant for the following circuit.



- Ans
- ✗ 1. 1.2 s
 - ✗ 2. 0.5 s
 - ✗ 3. 2.0 s
 - ✓ 4. 0.4 s

Question ID : 630680304209
 Option 1 ID : 6306801183399
 Option 2 ID : 6306801183398
 Option 3 ID : 6306801183400
 Option 4 ID : 6306801183397
 Status : Answered
 Chosen Option : 4

Q.96



The switch S is closed at $t = 0$. The complete response for $i(t)$ for $t > 0$ is:

- Ans
- 1. $2.5 - 2.5 e^{-0.75 t}$
 - 2. $2.5 - 2.5 e^{-1.33 t}$
 - 3. $2.5 - 2.5 e^{-1.43 t}$
 - 4. $2.5 - 2.5 e^{-2.5 t}$

Question ID : 630680304254

Option 1 ID : 6306801183577

Option 2 ID : 6306801183578

Option 3 ID : 6306801183579

Option 4 ID : 6306801183580

Status : Answered

Chosen Option : 2

Q.97 The ratio of back EMF to voltage of a DC motor is an indication of:

- Ans
- 1. starting torque
 - 2. speed regulation
 - 3. running torque
 - 4. efficiency

Question ID : 630680304293

Option 1 ID : 6306801183735

Option 2 ID : 6306801183733

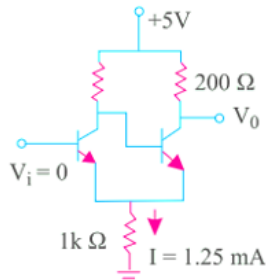
Option 3 ID : 6306801183736

Option 4 ID : 6306801183734

Status : Answered

Chosen Option : 4

Q.98 In the Schmitt trigger circuit shown, $V_{CE(sat)} = 0.1 \text{ V}$. The output logic low level is:



- Ans
- 1. 3.65 V
 - 2. 3.85 V
 - 3. 1.35 V
 - 4. 1.15 V

Question ID : 630680304310
 Option 1 ID : 6306801183803
 Option 2 ID : 6306801183804
 Option 3 ID : 6306801183802
 Option 4 ID : 6306801183801
 Status : Answered
 Chosen Option : 4

Q.99 Read the statements and select the correct option pertaining to the load flow analysis.

1. The diagonal element of each node is the negated admittance between the nodes.
2. The off-diagonal element is the sum of the admittances connected to it.

- Ans
- 1. Statement 1 is true and Statement 2 is false.
 - 2. Both Statement 1 and Statement 2 are false.
 - 3. Both Statement 1 and Statement 2 are true.
 - 4. Statement 2 is true and Statement 1 is false.

Question ID : 630680304304
 Option 1 ID : 6306801183779
 Option 2 ID : 6306801183778
 Option 3 ID : 6306801183778
 Option 4 ID : 6306801183780
 Status : Answered
 Chosen Option : 3

Q.100 A 3-phase transmission line is being supported by three disc insulators. The potentials across top unit and middle unit are 8 kV and 11 kV, respectively. Calculate the ratio of capacitance between pin and earth to the self-capacitance of each unit.

- Ans
- 1. 0.375
 - 2. 0.275
 - 3. 0.475
 - 4. 0.175

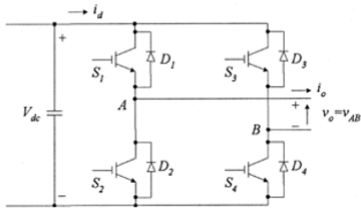
Question ID : 630680304234
 Option 1 ID : 6306801183499
 Option 2 ID : 6306801183498
 Option 3 ID : 6306801183500
 Option 4 ID : 6306801183497
 Status : Answered
 Chosen Option : 2

Q.101 A coil of 16 H is coupled with a coil of 4 H in such a way that coefficient of coupling is unity. Find the mutual inductance.

- Ans**
- 1. 10 H
 - 2. 8 H
 - 3. 12 H
 - 4. 16 H

Question ID : 630680304219
 Option 1 ID : 6306801183438
 Option 2 ID : 6306801183437
 Option 3 ID : 6306801183439
 Option 4 ID : 6306801183440
 Status : Answered
 Chosen Option : 2

Q.102



What will be the output voltage of this single-phase full bridge inverter when the switches S_2 and S_3 are turned on?

- Ans**
- 1. $-2V_{dc}$
 - 2. V_{dc}
 - 3. $2V_{dc}$
 - 4. $-V_{dc}$

Question ID : 630680304317
 Option 1 ID : 6306801183832
 Option 2 ID : 6306801183829
 Option 3 ID : 6306801183831
 Option 4 ID : 6306801183830
 Status : Answered
 Chosen Option : 4

Q.103 Find the equation for critical disruptive voltage (V_d) for local and general corona on a 3-phase overhead transmission line, where:

d = distance between conductor

r = radius of the conductor

m = irregularity factor

δ = the air density correction factor

Ans

✗ 1. $V_d = (21.1 * m * \delta * d) \ln \frac{d}{r}$

✗ 2. $V_d = (21.1 * m * \delta * r) \ln \frac{r}{d}$

✓ 3. $V_d = (21.1 * m * \delta * r) \ln \frac{d}{r}$

✗ 4. $V_d = (21.1 * m * \delta * d) \ln \frac{r}{d}$

Question ID : 630680304305

Option 1 ID : 6306801183783

Option 2 ID : 6306801183782

Option 3 ID : 6306801183781

Option 4 ID : 6306801183784

Status : Answered

Chosen Option : 3

Q.104 Which of the following conversions is obtained with the help of Gauss divergence theorem?

Ans

✗ 1. Line to surface integral

✗ 2. Volume to line integral

✓ 3. Surface to volume integral

✗ 4. Surface to line integral

Question ID : 630680304215

Option 1 ID : 6306801183422

Option 2 ID : 6306801183424

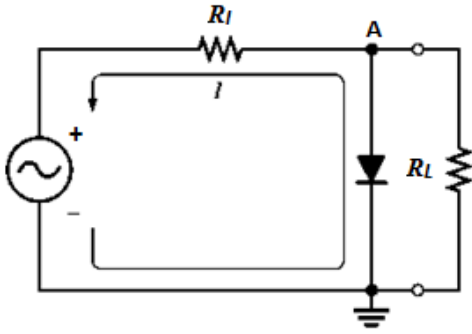
Option 3 ID : 6306801183423

Option 4 ID : 6306801183421

Status : Answered

Chosen Option : 3

Q.105 What is the given circuit known as?



- Ans
- 1. Positive clipper
 - 2. Biased clipper
 - 3. Clamper
 - 4. Negative clipper

Question ID : 630680304240
 Option 1 ID : 6306801183521
 Option 2 ID : 6306801183523
 Option 3 ID : 6306801183524
 Option 4 ID : 6306801183522

Status : Answered
 Chosen Option : 1

Q.106 What type of feedback is used in the OP-AMP for it to operate as a comparator?

- Ans
- 1. Regenerative feedback
 - 2. Negative feedback
 - 3. No feedback
 - 4. Positive feedback

Question ID : 630680304309
 Option 1 ID : 6306801183799
 Option 2 ID : 6306801183797
 Option 3 ID : 6306801183800
 Option 4 ID : 6306801183798

Status : Answered
 Chosen Option : 3

Q.107 Which of the following conditions is NOT a true derivative of Ampere's circuit law?

Ans 1. $\nabla \times J = H$

2. $I_{enc} = \int_S (\nabla \times H) \cdot dS$

3. $I_{enc} = \int_S J \cdot dS$

4. $I_{enc} = \oint_L H \cdot dl$

Question ID : 630680304266

Option 1 ID : 6306801183628

Option 2 ID : 6306801183626

Option 3 ID : 6306801183627

Option 4 ID : 6306801183625

Status : Answered

Chosen Option : 3

Q.108 If the poles of a closed-loop are complex with positive real parts, then the system is:

Ans 1. exponential decay

2. exponential and oscillatory increase

3. decaying and oscillatory

4. exponential increase

Question ID : 630680304287

Option 1 ID : 6306801183709

Option 2 ID : 6306801183712

Option 3 ID : 6306801183710

Option 4 ID : 6306801183711

Status : Answered

Chosen Option : 3

Q.109 Which of the following is NOT true according to Faraday's experiments?

Ans 1.

A static magnetic field produces a current flow in a closed circuit

2. Induced electromotive force = $-N \frac{d\psi}{dt}$

3. Induced electromotive force = $-\frac{d\lambda}{dt}$

4.

A time-varying field produces an induced voltage in a closed circuit

Question ID : 630680304265

Option 1 ID : 6306801183621

Option 2 ID : 6306801183624

Option 3 ID : 6306801183623

Option 4 ID : 6306801183622

Status : Answered

Chosen Option : 1

Q.110 Determine the gain at the breakaway point for the open-loop transfer function $G(s)H(s) = \frac{K}{s(s+1)}$.

- Ans
- 1. 0.25
 - 2. -0.25
 - 3. -0.5
 - 4. 0.5

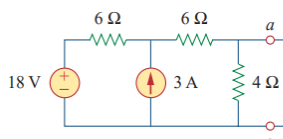
Question ID : 630680304280
 Option 1 ID : 6306801183683
 Option 2 ID : 6306801183681
 Option 3 ID : 6306801183682
 Option 4 ID : 6306801183684
 Status : Answered
 Chosen Option : 3

Q.111 A conductor of length 0.5 m moves in a uniform magnetic field of 1.2 T at a velocity of 30 m/s. Find the induced voltage in the conductor when the direction of motion is perpendicular to the field.

- Ans
- 1. 10 V
 - 2. 18 V
 - 3. 8 V
 - 4. 15 V

Question ID : 630680304220
 Option 1 ID : 6306801183443
 Option 2 ID : 6306801183441
 Option 3 ID : 6306801183444
 Option 4 ID : 6306801183442
 Status : Answered
 Chosen Option : 2

Q.112 If the following circuit is replaced by its Thevenin's equivalent between terminals 'a' and 'b', what will be the R_{TH} ?



- Ans
- 1. 16 Ω
 - 2. 10 Ω
 - 3. 4 Ω
 - 4. 3 Ω

Question ID : 630680304211
 Option 1 ID : 6306801183408
 Option 2 ID : 6306801183407
 Option 3 ID : 6306801183406
 Option 4 ID : 6306801183405
 Status : Answered
 Chosen Option : 4

Q.113 Which of the following is the main disadvantage of Hopkinson's test for finding efficiency of a DC shunt motor?

- Ans 1. Two identical shunt machines are required.
 2. It ignores the iron losses.
 3. It requires full load power.
 4. One motor and one generator is required.

Question ID : 630680304294
 Option 1 ID : 6306801183740
 Option 2 ID : 6306801183737
 Option 3 ID : 6306801183738
 Option 4 ID : 6306801183739
 Status : Answered
 Chosen Option : 4

Q.114 A system is given by $G(s) = \frac{K}{s(s+2)(s+4)}$ and $H(s) = 1$. What should be the value of K for the system to have stability?

- Ans 1. >48
 2. <24
 3. <48
 4. >24

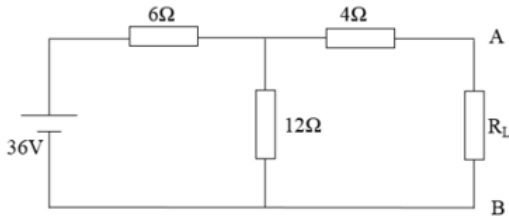
Question ID : 630680304279
 Option 1 ID : 6306801183679
 Option 2 ID : 6306801183678
 Option 3 ID : 6306801183680
 Option 4 ID : 6306801183677
 Status : Answered
 Chosen Option : 2

Q.115 In order to reduce voltage drops in various sections, distant points of the distributor are joined through a conductor called _____.

- Ans 1. isolator
 2. separator
 3. differentiator
 4. interconnector

Question ID : 630680304239
 Option 1 ID : 6306801183518
 Option 2 ID : 6306801183517
 Option 3 ID : 6306801183520
 Option 4 ID : 6306801183519
 Status : Answered
 Chosen Option : 4

Q.116



What should be the value of R_L in the above circuit for maximum power transfer?

- Ans
- 1. 4Ω
 - 2. 2Ω
 - 3. 8Ω
 - 4. 6Ω

Question ID : 630680304258
 Option 1 ID : 6306801183594
 Option 2 ID : 6306801183593
 Option 3 ID : 6306801183596
 Option 4 ID : 6306801183595
 Status : Answered
 Chosen Option : 3

Q.117 A point charge of 30 nC is located at the origin, while plane $Y = 3$ carries charge 10 nC/m^2 . Find flux density at $(0, 4, 3)$.

- Ans
- 1. $(3.076 a_y + 2.0573 a_z) \text{ nC/m}^2$
 - 2. $(5.076 a_y + 0.0573 a_z) \text{ nC/m}^2$
 - 3. $(5.076 a_y + 3.0573 a_z) \text{ nC/m}^2$
 - 4. $(3.076 a_y + 0.0573 a_z) \text{ nC/m}^2$

Question ID : 630680304260
 Option 1 ID : 6306801183601
 Option 2 ID : 6306801183604
 Option 3 ID : 6306801183603
 Option 4 ID : 6306801183602
 Status : Answered
 Chosen Option : 3

Q.118 Which of the following is NOT an advantage of Gauss-Seidel method over Newton-Raphson method?

- Ans
- 1. Single iteration of computation is faster.
 - 2. Ease of programming.
 - 3. Most efficient use of core memory.
 - 4. Number of iterations required is lesser.

Question ID : 630680304238
 Option 1 ID : 6306801183515
 Option 2 ID : 6306801183513
 Option 3 ID : 6306801183514
 Option 4 ID : 6306801183516
 Status : Answered
 Chosen Option : 4

Q.119 What is the maximum value of torque angle in electrical degrees for a synchronous motor?

- Ans
- 1. 360
 - 2. 90
 - 3. 45
 - 4. 180

Question ID : 630680304298
Option 1 ID : 6306801183756
Option 2 ID : 6306801183754
Option 3 ID : 6306801183753
Option 4 ID : 6306801183755
Status : Answered
Chosen Option : 2

Q.120 What should be the hysteresis loops of the materials used in electric generators, motors and transformers so that hysteresis losses are minimal?

- Ans
- 1. Short and wide
 - 2. Short and narrow
 - 3. Tall but narrow
 - 4. Tall and wide

Question ID : 630680304267
Option 1 ID : 6306801183630
Option 2 ID : 6306801183629
Option 3 ID : 6306801183632
Option 4 ID : 6306801183631
Status : Answered
Chosen Option : 3

Section : Test on Reasoning

Q.1 Three statements are given followed by two conclusions. Consider the statements and conclusions even if they vary from commonly known facts and decide which of the conclusions follow from the given statements.

Statements:

Some birds are cats.

No dog is a cat.

All dogs are birds.

Conclusions:

I. Some birds are dogs.

II. Some cats are birds.

- Ans
- 1. Only conclusion II follows.
 - 2. Neither conclusion I nor conclusion II follows.
 - 3. Both the conclusions follow.
 - 4. Only conclusion I follows.

Question ID : 630680304338
Option 1 ID : 6306801183914
Option 2 ID : 6306801183915
Option 3 ID : 6306801183916
Option 4 ID : 6306801183913
Status : Answered
Chosen Option : 3

Q.2 Three of the four letter cluster-pairs are similar in some way and one is different. Select the odd term out.

- Ans
- ✓ 1. FJQ : QHM
 - ✗ 2. HKN : NJM
 - ✗ 3. PSV : VRU
 - ✗ 4. CFK : KEH

Question ID : 630680304363
Option 1 ID : 6306801184014
Option 2 ID : 6306801184013
Option 3 ID : 6306801184015
Option 4 ID : 6306801184016
Status : Answered
Chosen Option : 1

Q.3 If all the letters of the word 'TOUGH' are arranged in alphabetical order which will be the middle most letter?

- Ans
- ✗ 1. H
 - ✗ 2. T
 - ✓ 3. O
 - ✗ 4. G

Question ID : 630680304349
Option 1 ID : 6306801183958
Option 2 ID : 6306801183959
Option 3 ID : 6306801183957
Option 4 ID : 6306801183960
Status : Answered
Chosen Option : 3

Q.4 In a code language, 'AMRISH' is coded as '136', 'DEVIKA' is coded as '156', how will 'MARY' be coded as in the same code language?

- Ans
- ✓ 1. 57
 - ✗ 2. 171
 - ✗ 3. 114
 - ✗ 4. 228

Question ID : 630680304354
Option 1 ID : 6306801183978
Option 2 ID : 6306801183979
Option 3 ID : 6306801183977
Option 4 ID : 6306801183980
Status : Answered
Chosen Option : 1

Q.5 Find the wrong term in the given number series.

75, 79, 92, 104, 129

- Ans
- ✓ 1. 92
 - ✗ 2. 104
 - ✗ 3. 129
 - ✗ 4. 79

Question ID : 630680304370
 Option 1 ID : 6306801184043
 Option 2 ID : 6306801184044
 Option 3 ID : 6306801184042
 Option 4 ID : 6306801184041
 Status : Answered
 Chosen Option : 4

Q.6 Find the approximate value of the given expression.

$1.99 \times 2.02 + 3.03 - 6.03 \div 2.01$

- Ans
- ✗ 1. 8
 - ✓ 2. 4
 - ✗ 3. 13
 - ✗ 4. 17

Question ID : 630680304371
 Option 1 ID : 6306801184045
 Option 2 ID : 6306801184046
 Option 3 ID : 6306801184047
 Option 4 ID : 6306801184048
 Status : Answered
 Chosen Option : 2

Q.7 A letter, number and symbol arranged machine when given an input of letters and numbers rearranges them following a particular pattern in every step. Following is an illustration of output, the final step, when given an input:

Input: A # Y S T 4 @

Step1: S 4 A # Y T @

Step2: S 4 A Y T # @

Step3: 4 S A T Y # @ (Output)

Which will be the output for the below input?

T S J 13 P 9 *

- Ans
- ✗ 1. 9 13 T P J S *
 - ✓ 2. 9 13 J P T S *
 - ✗ 3. 13 9 J P T S *
 - ✗ 4. 13 9 J T P S *

Question ID : 630680304355
 Option 1 ID : 6306801183984
 Option 2 ID : 6306801183983
 Option 3 ID : 6306801183981
 Option 4 ID : 6306801183982
 Status : Answered
 Chosen Option : 1

Q.8 In a code language, 'PIYUSH' is coded as '294', 'MOHAN' is coded as '153', how will 'RAVISH' be coded as in the same code language?

- Ans**
- 1. 156
 - 2. 324
 - 3. 231
 - 4. 196

Question ID : 630680304353
 Option 1 ID : 6306801183975
 Option 2 ID : 6306801183974
 Option 3 ID : 6306801183976
 Option 4 ID : 6306801183973

Status : Answered

Chosen Option : 1

Q.9 Six employees P, Q, R, S, T and U live in a same building but on different floors of a six floored building. Ground floor is marked as floor 1, floor above it as floor 2 and so on up to floor 6. R lives 2 floors above the floor of U and 2 floors below the floor of P. Q lives 2 floors below the floor of T and 2 floors above the floor of S. R lives on any floor below the floor of Q. Who lives on 4th floor?

- Ans**
- 1. Q
 - 2. P
 - 3. T
 - 4. S

Question ID : 630680304333
 Option 1 ID : 6306801183896
 Option 2 ID : 6306801183894
 Option 3 ID : 6306801183895
 Option 4 ID : 6306801183893

Status : Answered

Chosen Option : 1

Q.10 Select the term which is related to the 3rd term in the same way as the 2nd term is related to the 1st term.

BJ : YQ :: HP : ?

- Ans**
- 1. BP
 - 2. JT
 - 3. MP
 - 4. SK

Question ID : 630680304361
 Option 1 ID : 6306801184008
 Option 2 ID : 6306801184006
 Option 3 ID : 6306801184007
 Option 4 ID : 6306801184005

Status : Answered

Chosen Option : 4

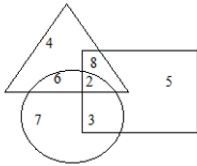
Q.11 Which term will replace the question mark in the given alpha-numeric series?

93K, 118E, ?, 168S, 193M

- Ans
- 1. 143X
 - 2. 148A
 - 3. 143Z
 - 4. 143Y

Question ID : 630680304346
 Option 1 ID : 6306801183947
 Option 2 ID : 6306801183948
 Option 3 ID : 6306801183945
 Option 4 ID : 6306801183946
 Status : Answered
 Chosen Option : 4

Q.12 Consider the given figure and answer the following question. Triangle indicates girls, rectangle indicates dancers, circle indicates players. Numbers written in different shapes indicate number of person in that category.



How many girls are either dancers or players but not both?

- Ans
- 1. 10
 - 2. 16
 - 3. 8
 - 4. 14

Question ID : 630680304340
 Option 1 ID : 6306801183921
 Option 2 ID : 6306801183924
 Option 3 ID : 6306801183923
 Option 4 ID : 6306801183922
 Status : Answered
 Chosen Option : 4

Q.13 If each even digit of the number 725826 is replaced with its respective successor and each odd digit is replaced with its predecessor, what will be the total of all digits in the new number?

- Ans
- 1. 24
 - 2. 52
 - 3. 48
 - 4. 32

Question ID : 630680304347
 Option 1 ID : 6306801183952
 Option 2 ID : 6306801183951
 Option 3 ID : 6306801183950
 Option 4 ID : 6306801183949
 Status : Answered
 Chosen Option : 4

Q.14 Three statements are given followed by two conclusions. Consider the statements and conclusions even if they vary from commonly known facts and decide which of the conclusions follow from the given statements.

Statements:

Some students are players.

Some players are dancers.

No dancer is a student.

Conclusions:

I. Some dancers are players.

II. No student is a dancer.

Ans ✗ 1. Neither conclusion I nor conclusion II follows.

✗ 2. Only conclusion I follows.

✗ 3. Only conclusion II follows.

✓ 4. Both the conclusions follow.

Question ID : 630680304339

Option 1 ID : 6306801183919

Option 2 ID : 6306801183917

Option 3 ID : 6306801183918

Option 4 ID : 6306801183920

Status : Answered

Chosen Option : 2

Q.15 Two statements are given followed by two conclusions. Decide which of the conclusions logically follows from the given statements.

Statements:

P and Q is a couple, M and N is a couple.

N is the daughter-in-law of Q.

Conclusions:

I. P is the father of M.

II. Q is the father-in-law of N.

Ans ✓ 1. Either conclusion I or conclusion II follows.

✗ 2. Only conclusion I follows.

✗ 3. Only conclusion II follows.

✗ 4. Both the conclusions follow.

Question ID : 630680304366

Option 1 ID : 6306801184027

Option 2 ID : 6306801184025

Option 3 ID : 6306801184026

Option 4 ID : 6306801184028

Status : Answered

Chosen Option : 1

Q.16 Which will be the next term in the given letter series?

X, W, S, J, T, ?

- Ans
- 1. K
 - 2. S
 - 3. P
 - 4. U

Question ID : 630680304345

Option 1 ID : 6306801183944

Option 2 ID : 6306801183941

Option 3 ID : 6306801183942

Option 4 ID : 6306801183943

Status : Answered

Chosen Option : 3

Q.17 Six friends M, N, O, P, Q and R are playing a game standing equidistantly in a circle facing the center. Only M is standing between O and Q. Only N is standing between P and R. P is directly facing O. Q is at immediate left of M.

Who is 3rd to the left of M?

- Ans
- 1. N
 - 2. P
 - 3. R
 - 4. Q

Question ID : 630680304337

Option 1 ID : 6306801183911

Option 2 ID : 6306801183909

Option 3 ID : 6306801183910

Option 4 ID : 6306801183912

Status : Answered

Chosen Option : 1

Q.18 If a direction indicator is showing South as North West and North as South East, then which is the actual direction shown by it as North East?

- Ans
- 1. South East
 - 2. West
 - 3. South
 - 4. South West

Question ID : 630680304358

Option 1 ID : 6306801183995

Option 2 ID : 6306801183994

Option 3 ID : 6306801183993

Option 4 ID : 6306801183996

Status : Answered

Chosen Option : 3

Q.19 Six boxes A, B, C, D, E and F are kept on one another but not in the same order. Among all the boxes one box is red and others are black. Red box is not kept between 2 black boxes. Box C is kept above box F and below box E. Box B, a black box, is kept 2 places above box C. Box A is kept 3 places below box C. Which one is the red box?

- Ans**
- 1. Box F
 - 2. Box D
 - 3. Box E
 - 4. Box A

Question ID : 630680304334
 Option 1 ID : 6306801183899
 Option 2 ID : 6306801183897
 Option 3 ID : 6306801183898
 Option 4 ID : 6306801183900
 Status : Answered
 Chosen Option : 4

Q.20 Given below is a statement followed by two assumptions numbered I and II. You have to decide which of the assumptions is implicit in the given statement.

Statement: Meena says, 'I can win in chess easily.'

Assumptions:

- I. Chess is an easy game.
- II. Meena is expert in playing chess.

- Ans**
- 1. Only assumption I is implicit.
 - 2. Both the assumptions are implicit.
 - 3. Only assumption II is implicit.
 - 4. Neither assumption I nor assumption II is implicit.

Question ID : 630680304365
 Option 1 ID : 6306801184021
 Option 2 ID : 6306801184024
 Option 3 ID : 6306801184022
 Option 4 ID : 6306801184023
 Status : Answered
 Chosen Option : 3

Q.21 Six children M, N, O, P, Q and R are seated in a straight line facing the North. Only O is seated between M and Q. Only R is seated between N and P. P is at immediate right of Q. Who is at left end?

- Ans**
- 1. P
 - 2. M
 - 3. Q
 - 4. N

Question ID : 630680304330
 Option 1 ID : 6306801183882
 Option 2 ID : 6306801183884
 Option 3 ID : 6306801183883
 Option 4 ID : 6306801183881
 Status : Answered
 Chosen Option : 2

Q.22 Seven friends P, Q, R, S, T, U and V prepared together for an entrance examination and each one scored different marks. Only three friends scored more than P. Only four friends scored less than T. Q scored less marks than U but more marks than R. Only one friend scored less marks than V. S scored more than T but not the highest. Who scored more than V but less than P?

- Ans**
- 1. T
 - 2. S
 - 3. Q
 - 4. R

Question ID : 630680304344
Option 1 ID : 6306801183940
Option 2 ID : 6306801183938
Option 3 ID : 6306801183937
Option 4 ID : 6306801183939
Status : Answered
Chosen Option : 3

Q.23 Given is a question followed by two statements. Consider the question and statements and decide which of the statements is sufficient to answer the given question.

Question: Is Rehan elder to Mona?

Statements:

I. Mona is 5 years younger to Ajay.

II. Ajay is 7 years elder to Rehan.

- Ans**
- 1. Only statement II is sufficient.
 - 2. Neither statement I nor statement II is sufficient.
 - 3. Only statement I is sufficient.
 - 4. Both the statements are necessary.

Question ID : 630680304360
Option 1 ID : 6306801184002
Option 2 ID : 6306801184003
Option 3 ID : 6306801184001
Option 4 ID : 6306801184004
Status : Answered
Chosen Option : 4

Q.24 If in a code language,

A+B, means A is the brother of B,

A-B, means A is the father of B,

ASB, means A is the wife of B,

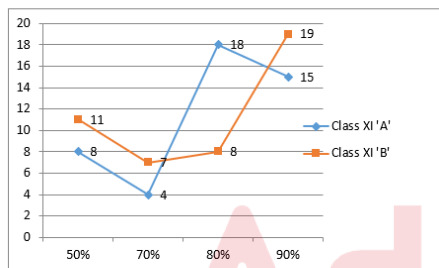
A@B, means A is the son of B;

then for the given expression 'J @ Q \$ G - T + S', how is J related to S?

- Ans
- ✓ 1. Brother
 - ✗ 2. Cousin
 - ✗ 3. Sister
 - ✗ 4. Uncle

Question ID : 630680304359
 Option 1 ID : 6306801183997
 Option 2 ID : 6306801184000
 Option 3 ID : 6306801183998
 Option 4 ID : 6306801183999
 Status : Answered
 Chosen Option : 1

Q.25 Given line graph depicts percentage of marks obtained by number of students of two sections of class XI in mathematics. Consider the graph and answer the question that follows.



What is the difference between the number of students who got the highest percentage in Class XI 'A' and number of students who got the lowest percentage in Class XI 'B'?

- Ans
- ✗ 1. 3
 - ✓ 2. 4
 - ✗ 3. 6
 - ✗ 4. 10

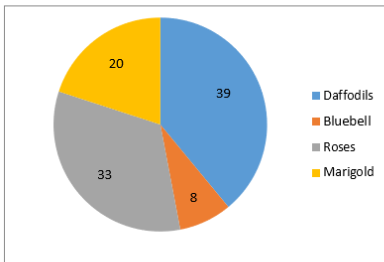
Question ID : 630680304374
 Option 1 ID : 6306801184059
 Option 2 ID : 6306801184057
 Option 3 ID : 6306801184060
 Option 4 ID : 6306801184058
 Status : Answered
 Chosen Option : 2

Q.26 If starting from ones place, odd number places digits of the number 947051 are replaced with their respective successors, then what will be the difference between the addition of even number places digits and addition odd number places digits?

- Ans**
- 1. 27
 - 2. 9
 - 3. 32
 - 4. 13

Question ID : 630680304373
 Option 1 ID : 6306801184053
 Option 2 ID : 6306801184055
 Option 3 ID : 6306801184054
 Option 4 ID : 6306801184056
 Status : Answered
 Chosen Option : 4

Q.27 Given pie chart depicts number of plants (in percentage) in a garden. Consider the chart and answer the question that follows.



If there are 17 marigold plants in the garden, then how many total plants are there?

- Ans**
- 1. 85
 - 2. 75
 - 3. 48
 - 4. 340

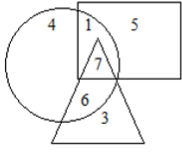
Question ID : 630680304376
 Option 1 ID : 6306801184066
 Option 2 ID : 6306801184067
 Option 3 ID : 6306801184068
 Option 4 ID : 6306801184065
 Status : Answered
 Chosen Option : 1

Q.28 Seven friends A, B, C, D, E, F and G are seated around a circular table facing the center. In the group two girls are there and rest are boys. No girl is seated between two boys only. A is 2nd to the left of a girl, who is 3rd to the left of D. Only C is seated between F and G. B is a girl and seated 2nd to the right of E. D is not an immediate neighbor of F. Who is the second girl?

- Ans**
- 1. F
 - 2. C
 - 3. E
 - 4. A

Question ID : 630680304328
 Option 1 ID : 6306801183876
 Option 2 ID : 6306801183873
 Option 3 ID : 6306801183875
 Option 4 ID : 6306801183874
 Status : Answered
 Chosen Option : 1

Q.29 Consider the given figure and answer the following question. Triangle indicates players, rectangle indicates primary students, circle indicates kids. Numbers written in different shapes indicate number of person in that category.



How many players are kids but not primary students?

- Ans**
- 1. 7
 - 2. 6
 - 3. 1
 - 4. 13

Question ID : 630680304341
 Option 1 ID : 6306801183925
 Option 2 ID : 6306801183926
 Option 3 ID : 6306801183928
 Option 4 ID : 6306801183927
 Status : Answered
 Chosen Option : 2

Q.30 Seven students T, U, V, W, X, Y and Z are entering the classroom in the order of decreasing height. All have different heights. W enters after two of his friends. Z enters before three of his friends. V enters just after Y, who enters just after X. T is not the first to enter. Who enters the first?

- Ans**
- 1. X
 - 2. Z
 - 3. U
 - 4. W

Question ID : 630680304343
 Option 1 ID : 6306801183935
 Option 2 ID : 6306801183933
 Option 3 ID : 6306801183936
 Option 4 ID : 6306801183934
 Status : Answered
 Chosen Option : 3

Q.31 One statement is given followed by two courses of action. Decide which of the courses of action logically follows for pursuing.

Statement:

Class X result of School A this year is not satisfactory.

Courses of Action:

I. Teachers teaching Class X should be changed.

II. Reasons behind students' weak performance should be identified and resolved.

- Ans**
- 1. Only Course of Action II follows.
 - 2. Only Course of Action I follows.
 - 3. Neither Course of Action I nor II follows.
 - 4. Both the Courses of Action follow.

Question ID : 630680304367
 Option 1 ID : 6306801184030
 Option 2 ID : 6306801184029
 Option 3 ID : 6306801184031
 Option 4 ID : 6306801184032
 Status : Answered
 Chosen Option : 1

Q.32 Ajay, Bhanu, Chetan, Danish, Eesha and Franklin live in a same building but each one on different floor of a six floored building. Ground floor is marked as floor 1, floor above it as floor 2 and so on up to floor 6. A does not live on just above or just below the floor of D. E does not live on just above or just below the floor of B. Only one friend lives between the floors of A and E. E does not live on any floor below the floor of A. Neither E nor D live on top floor.

Neither A nor B live on bottom floor. Neither C nor F live on bottom floor. Who lives on 3rd floor?

- Ans**
- 1. C
 - 2. F
 - 3. E
 - 4. A

Question ID : 630680304336
 Option 1 ID : 6306801183908
 Option 2 ID : 6306801183907
 Option 3 ID : 6306801183906
 Option 4 ID : 6306801183905
 Status : Answered
 Chosen Option : 4

Q.33 Which will be the next term in the given number series?

17, 34, 61, 98, ?

- Ans**
- 1. 145
 - 2. 102
 - 3. 126
 - 4. 112

Question ID : 630680304369
 Option 1 ID : 6306801184039
 Option 2 ID : 6306801184040
 Option 3 ID : 6306801184038
 Option 4 ID : 6306801184037
 Status : Answered
 Chosen Option : 1

Q.34 If in the word 'easy', vowels are replaced with 3 steps forward letters respectively and consonants are replaced with 5 steps backward letters respectively; which will be the 2nd letter from the right end?

- Ans**
- 1. D
 - 2. V
 - 3. S
 - 4. N

Question ID : 630680304348
 Option 1 ID : 6306801183954
 Option 2 ID : 6306801183956
 Option 3 ID : 6306801183955
 Option 4 ID : 6306801183953
 Status : Answered
 Chosen Option : 4

Q.35 Eight friends A, B, C, D, E, F, G and H are seated around a square table facing inside. Four of them are seated at corners and four are seated at the middle of the sides. One friend is a foreigner among all who is seated between F and H only. D is 4th to the right of G and 2nd to the left of A. Only E is seated between B and C. Who is the foreigner?

- Ans**
- 1. B
 - 2. A
 - 3. D
 - 4. C

Question ID : 630680304329
 Option 1 ID : 6306801183877
 Option 2 ID : 6306801183878
 Option 3 ID : 6306801183879
 Option 4 ID : 6306801183880
 Status : Answered
 Chosen Option : 2

Q.36 Ajay, Bhanu, Chetan, Danish, Eesha and Franklin live in a same building but each one on different floor of a six floored building. Ground floor is marked as floor 1, floor above it as floor 2 and so on up to floor 6. A does not live on just above or just below the floor of D. E does not live on just above or just below the floor of B. Only one friend lives between the floors of A and E. E does not live on any floor below the floor of A. Neither E nor D live on top floor. Neither A nor B live on bottom floor. Neither C nor F live on bottom floor. Who lives on 5th floor?

- Ans**
- 1. F
 - 2. C
 - 3. E
 - 4. A

Question ID : 630680304335
 Option 1 ID : 6306801183904
 Option 2 ID : 6306801183903
 Option 3 ID : 6306801183902
 Option 4 ID : 6306801183901
 Status : Answered
 Chosen Option : 1

Q.37 In a code language, 'OVER' is coded as 'QSGO', 'MANGO' is coded as 'JCKDQ', how will 'GRAPE' be coded as in the same code language?

- Ans**
- 1. ITCRG
 - 2. ITXMG
 - 3. DOCMG
 - 4. ITXRB

Question ID : 630680304352
Option 1 ID : 6306801183971
Option 2 ID : 6306801183972
Option 3 ID : 6306801183969
Option 4 ID : 6306801183970
Status : Answered
Chosen Option : 2

Q.38 Which two numbers should be changed in the given expression to make it correct?

$$38 \times 3 + 87 \div 2 - 51 = 54$$

- Ans**
- 1. 2 and 3
 - 2. 2 and 38
 - 3. 51 and 87
 - 4. 3 and 51

Question ID : 630680304372
Option 1 ID : 6306801184050
Option 2 ID : 6306801184051
Option 3 ID : 6306801184052
Option 4 ID : 6306801184049
Status : Answered
Chosen Option : 1

Q.39 One morning Tushar goes for jogging. He jogs for 5 m to the straight road, then turns towards his left and jogs for 10m. Then again he turns towards his left and jogs for 2m. He faces Sun this time. To which direction he starts jogging?

- Ans**
- 1. West
 - 2. South
 - 3. East
 - 4. North

Question ID : 630680304357
Option 1 ID : 6306801183992
Option 2 ID : 6306801183991
Option 3 ID : 6306801183990
Option 4 ID : 6306801183989
Status : Answered
Chosen Option : 1

Q.40 If each digit of the number 204576 is replaced with its respective successor, what will be the addition of all the digits in the new number?

- Ans**
- ✓ 1. 30
 - ✗ 2. 28
 - ✗ 3. 39
 - ✗ 4. 41

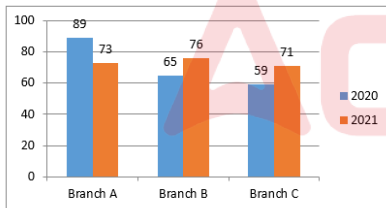
Question ID : 630680304350
 Option 1 ID : 6306801183963
 Option 2 ID : 6306801183962
 Option 3 ID : 6306801183964
 Option 4 ID : 6306801183961
 Status : Answered
 Chosen Option : 1

Q.41 Sohini goes to school after one week of sick leave. Now she has a class test after two days, on Saturday. On which day she lastly attended the class before her sick leave?

- Ans**
- ✗ 1. Tuesday
 - ✗ 2. Thursday
 - ✗ 3. Friday
 - ✓ 4. Wednesday

Question ID : 630680304351
 Option 1 ID : 6306801183967
 Option 2 ID : 6306801183965
 Option 3 ID : 6306801183966
 Option 4 ID : 6306801183968
 Status : Answered
 Chosen Option : 2

Q.42 Given bar graph depicts the sales of books (in thousands) from three different branches of a publishing company in two different years. Consider the graph and answer the question that follows.



What is the ratio of the total sales from Branch B to the total sales from Branch C for both the years?

- Ans**
- ✗ 1. 130/141
 - ✓ 2. 141/130
 - ✗ 3. 76/71
 - ✗ 4. 124/147

Question ID : 630680304375
 Option 1 ID : 6306801184061
 Option 2 ID : 6306801184063
 Option 3 ID : 6306801184064
 Option 4 ID : 6306801184062
 Status : Answered
 Chosen Option : 2

Q.43 Three of the four letter cluster-pairs are similar in some way and one is different. Select the odd term out.

- Ans**
- 1. CFHJ : DHKN
 - 2. RTWZ : SVZD
 - 3. PSTX : QQQT
 - 4. EKNS : FMQW

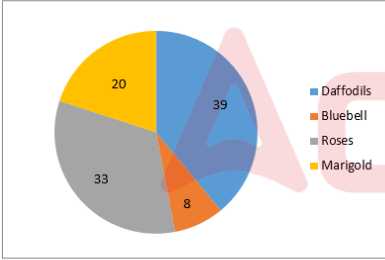
Question ID : 630680304362
 Option 1 ID : 6306801184011
 Option 2 ID : 6306801184010
 Option 3 ID : 6306801184012
 Option 4 ID : 6306801184009
 Status : Answered
 Chosen Option : 3

Q.44 If at 2.15 P.M. a clock's minute hand indicates South, then at 7.45 A.M. to which direction will it indicate?

- Ans**
- 1. West
 - 2. East
 - 3. North
 - 4. North West

Question ID : 630680304356
 Option 1 ID : 6306801183986
 Option 2 ID : 6306801183985
 Option 3 ID : 6306801183988
 Option 4 ID : 6306801183987
 Status : Answered
 Chosen Option : 3

Q.45 Given pie chart depicts number of plants (in percentage) in a garden. Consider the chart and answer the question that follows.



If there are 96 bluebell plants in the garden, then what is the number of rose plants?

- Ans**
- 1. 396
 - 2. 224
 - 3. 173
 - 4. 266

Question ID : 630680304377
 Option 1 ID : 6306801184070
 Option 2 ID : 6306801184072
 Option 3 ID : 6306801184071
 Option 4 ID : 6306801184069
 Status : Answered
 Chosen Option : 1

Q.46 Two statements are given numbered I and II. There may be cause and effect relation between them. Consider the statements and find the correct option.

Statements:

I. Mother has taken away mobile phone from her son.

II. The son spends a lot of time on playing mobile games.

- Ans**
- 1. Both the statements are independent causes.
 - 2. Both the statements are effects of some common cause.
 - 3. Statement I is cause and statement II is its effect.
 - 4. Statement II is cause and statement I is its effect.

Question ID : 630680304364

Option 1 ID : 6306801184019

Option 2 ID : 6306801184020

Option 3 ID : 6306801184017

Option 4 ID : 6306801184018

Status : Answered

Chosen Option : 4

Q.47 Students of a class are allowed to enter the classroom in the order of increasing height after morning assembly. Amisha is 4th to enter while Rashmi is 4th from last to enter. 14 Students enter between Amish and Rashmi How many students enter after Amisha?

- Ans**
- 1. 14
 - 2. 21
 - 3. 22
 - 4. 18

Question ID : 630680304332

Option 1 ID : 6306801183890

Option 2 ID : 6306801183892

Option 3 ID : 6306801183889

Option 4 ID : 6306801183891

Status : Answered

Chosen Option : 4

Q.48 Two statements are given followed by two conclusions. Decide which of the conclusions logically follows from the given statements.

Statements:

Tushar is taller than Shikha.

Shikha is shorter than Shubhankar.

Conclusions:

I. Tushar is taller than Shubhankar.

II. Shubhankar is taller than Tushar.

- Ans**
- 1. Both the conclusions follow.
 - 2. Neither conclusion I nor conclusion II follows.
 - 3. Only conclusion I follows.
 - 4. Only conclusion II follows.

Question ID : 630680304368
Option 1 ID : 6306801184036
Option 2 ID : 6306801184035
Option 3 ID : 6306801184033
Option 4 ID : 6306801184034
Status : Answered
Chosen Option : 2

Q.49 Seven friends A, B, C, D, E, F and G are of different ages. C is elder to E but younger to G. B is younger to D but elder to F. Who is definitely NOT the eldest?

- Ans**
- 1. G
 - 2. F
 - 3. A
 - 4. D

Question ID : 630680304342
Option 1 ID : 6306801183929
Option 2 ID : 6306801183930
Option 3 ID : 6306801183932
Option 4 ID : 6306801183931
Status : Answered
Chosen Option : 2

Q.50 38 Students of a class are standing in a queue in the order of increasing height. Sheena is 14th from last and Ved is 13th from front. Roshan is standing at the middle most position between Sheena and Ved. How many students are there between Roshan and Sheena?

- Ans**
- 1. 7
 - 2. 5
 - 3. 6
 - 4. 8

Question ID : 630680304331
Option 1 ID : 6306801183887
Option 2 ID : 6306801183885
Option 3 ID : 6306801183886
Option 4 ID : 6306801183888
Status : Answered
Chosen Option : 1

Q.1 In how many schools across the nation has the Youth Affairs and Sports Ministry hosted the 'Meet the Champion project'?

- Ans 1. 42
 2. 26
 3. 37
 4. 30

Question ID : 630680304395
Option 1 ID : 6306801184144
Option 2 ID : 6306801184141
Option 3 ID : 6306801184143
Option 4 ID : 6306801184142
Status : Answered
Chosen Option : 3

Q.2 The 74th Amendment Act pertaining to urban local government was passed during the regime of:

- Ans 1. Morarji Desai
 2. Chandra Shekhar
 3. P.V. Narsimha Rao
 4. V.P. Singh

Question ID : 630680304394
Option 1 ID : 6306801184137
Option 2 ID : 6306801184140
Option 3 ID : 6306801184138
Option 4 ID : 6306801184139
Status : Answered
Chosen Option : 3

Q.3 As per the Indian Constitution, what is the maximum number of members that can be nominated by the President in the council of states?

- Ans 1. 15
 2. 18
 3. 20
 4. 12

Question ID : 630680304391
Option 1 ID : 6306801184126
Option 2 ID : 6306801184127
Option 3 ID : 6306801184128
Option 4 ID : 6306801184125
Status : Answered
Chosen Option : 1

Q.4 Who was conferred the Men's Footballer of the Year for the year 2021-2022 by the All India Football Federation?

- Ans
- 1. Suresh Singh
 - 2. Anirudh Thapa
 - 3. Mohammed Yasir
 - 4. Sunil Chhetri

Question ID : 630680304396
Option 1 ID : 6306801184147
Option 2 ID : 6306801184146
Option 3 ID : 6306801184145
Option 4 ID : 6306801184148
Status : Answered
Chosen Option : 4

Q.5 In which year was the Ramakrishna Mission founded by Swami Vivekananda in Belur near Calcutta to promote the teachings of Vivekananda's Guru Ramakrishna Paramahansa?

- Ans
- 1. 1897
 - 2. 1899
 - 3. 1890
 - 4. 1893

Question ID : 630680304380
Option 1 ID : 6306801184081
Option 2 ID : 6306801184084
Option 3 ID : 6306801184082
Option 4 ID : 6306801184083
Status : Answered
Chosen Option : 1

Q.6 Niccolò de' Conti was an Italian traveller and a merchant who visited Vijayanagara in the _____.

- Ans
- 1. 13th Century
 - 2. 14th Century
 - 3. 16th Century
 - 4. 15th Century

Question ID : 630680304379
Option 1 ID : 6306801184080
Option 2 ID : 6306801184077
Option 3 ID : 6306801184079
Option 4 ID : 6306801184078
Status : Answered
Chosen Option : 2

Q.7 Which of the following mountain peaks is located in the Rajaji Range of the Shivalik Hills in the state of Uttar Pradesh?

- Ans 1. Dhupgarh
 2. Pushpagiri
 3. Amsot
 4. Guru Shikhar

Question ID : 630680304385
Option 1 ID : 6306801184102
Option 2 ID : 6306801184104
Option 3 ID : 6306801184103
Option 4 ID : 6306801184101
Status : Answered
Chosen Option : 1

Q.8 When was the Jammu and Kashmir Official Languages Bill, 2020, passed in the Rajya Sabha?

- Ans 1. 5 June 2020
 2. 23 September 2020
 3. 18 January 2020
 4. 15 November 2020

Question ID : 630680304392
Option 1 ID : 6306801184132
Option 2 ID : 6306801184130
Option 3 ID : 6306801184131
Option 4 ID : 6306801184129
Status : Answered
Chosen Option : 2

Q.9 What was the rural and urban sex ratio, respectively, in Kerala, as per Census 2011?

- Ans 1. 1078 and 1084
 2. 1078 and 1091
 3. 1084 and 1091
 4. 1091 and 1084

Question ID : 630680304386
Option 1 ID : 6306801184108
Option 2 ID : 6306801184107
Option 3 ID : 6306801184106
Option 4 ID : 6306801184105
Status : Answered
Chosen Option : 3

Q.10 By which Constitutional Amendment Act is Part IX B mentioned in the Indian Constitution?

- Ans 1. Constitution (Eighty-third Amendment) Act, 2000
 2. Constitution (Seventh Amendment) Act, 1956
 3. Constitution (Ninety-seventh Amendment) Act, 2011
 4. Constitution (Seventy-fourth Amendment) Act, 1992

Question ID : 630680304393
Option 1 ID : 6306801184135
Option 2 ID : 6306801184136
Option 3 ID : 6306801184134
Option 4 ID : 6306801184133
Status : Answered
Chosen Option : 3

Q.11 Who was the viceroy of British India when the cabinet mission came to India?

- Ans 1. Lord Wavell
 2. Lord Willingdon
 3. Lord Linlithgow
 4. Lord Irwin

Question ID : 630680304381
Option 1 ID : 6306801184087
Option 2 ID : 6306801184085
Option 3 ID : 6306801184086
Option 4 ID : 6306801184088
Status : Answered
Chosen Option : 4

Q.12 How many bronze medals did India win in the Commonwealth Games 2022?

- Ans 1. 21
 2. 20
 3. 22
 4. 23

Question ID : 630680304397
Option 1 ID : 6306801184150
Option 2 ID : 6306801184149
Option 3 ID : 6306801184151
Option 4 ID : 6306801184152
Status : Answered
Chosen Option : 3

Q.13 From which country was the procedure of the Amendment of the Constitution adopted in the Indian Constitution?

- Ans 1. France
 2. South Africa
 3. Ireland
 4. Unites States of America

Question ID : 630680304390
Option 1 ID : 6306801184123
Option 2 ID : 6306801184124
Option 3 ID : 6306801184122
Option 4 ID : 6306801184121
Status : Answered
Chosen Option : 1

Q.14 Which river enters India at Kotia Ghat near Royal Bardiya National Park, Nepal Ganj, where it is known as the river Girwa for about 25 km?

- Ans 1. Gandak
 2. Kosi
 3. Ghaghara
 4. Tista

Question ID : 630680304384
Option 1 ID : 6306801184100
Option 2 ID : 6306801184097
Option 3 ID : 6306801184098
Option 4 ID : 6306801184099
Status : Answered
Chosen Option : 2

Q.15 The Kalinga major rock edict of Ashoka is found in present day:

- Ans 1. Odisha
 2. Gujarat
 3. Maharashtra
 4. Bihar

Question ID : 630680304382
Option 1 ID : 6306801184091
Option 2 ID : 6306801184090
Option 3 ID : 6306801184089
Option 4 ID : 6306801184092
Status : Answered
Chosen Option : 1

Q.16 In which State or UT is the Rapuru Railway Tunnel located?

- Ans 1. West Bengal
 2. Andhra Pradesh
 3. Jammu and Kashmir
 4. Himachal Pradesh

Question ID : 630680304388
Option 1 ID : 6306801184116
Option 2 ID : 6306801184113
Option 3 ID : 6306801184115
Option 4 ID : 6306801184114
Status : Answered
Chosen Option : 3

Q.17 In which Part of the Indian Constitution it is mentioned that "there shall be equality of opportunity for all citizens in matters relating to employment or appointment to any office under the State"?

- Ans 1. Part IV
 2. Part III
 3. Part I
 4. Part II

Question ID : 630680304389
Option 1 ID : 6306801184119
Option 2 ID : 6306801184117
Option 3 ID : 6306801184120
Option 4 ID : 6306801184118
Status : Answered
Chosen Option : 2

Q.18 The Prayag Prashasti also known as the Allahabad Pillar Inscription is composed in Sanskrit by Harisena who was the court poet of:

- Ans 1. Kumargupta I
 2. Chandragupta I
 3. Skandgupta
 4. Samudragupta

Question ID : 630680304383
Option 1 ID : 6306801184096
Option 2 ID : 6306801184093
Option 3 ID : 6306801184094
Option 4 ID : 6306801184095
Status : Answered
Chosen Option : 2

Q.19 To which of the following dynasties did Khizr Khan who ruled from 1414 to 1421 belong?

- Ans
- 1. Lodi dynasty
 - 2. Khalji dynasty
 - 3. Tughluq dynasty
 - 4. Sayyid dynasty

Question ID : 630680304378
Option 1 ID : 6306801184073
Option 2 ID : 6306801184075
Option 3 ID : 6306801184076
Option 4 ID : 6306801184074
Status : Answered
Chosen Option : 1

Q.20 As per Census 2011, _____ has the highest population of Scheduled tribes in India.

- Ans
- 1. Rajasthan
 - 2. Bihar
 - 3. Madhya Pradesh
 - 4. Mizoram

Question ID : 630680304387
Option 1 ID : 6306801184112
Option 2 ID : 6306801184109
Option 3 ID : 6306801184111
Option 4 ID : 6306801184110
Status : Answered
Chosen Option : 3

Section : General English

Q.1 Select the option that can replace the underlined word correctly. If you don't find any error, mark 'No error' as your answer.

Film buffs in Kerala will have their own personal favourites to pick from the extensive work of legendary French filmmaker Jean-Luc Godard.

- Ans
- 1. out
 - 2. up
 - 3. by
 - 4. No error

Question ID : 630680304427
Option 1 ID : 6306801184270
Option 2 ID : 6306801184271
Option 3 ID : 6306801184269
Option 4 ID : 6306801184272
Status : Answered
Chosen Option : 4

Q.2 Sentences of a paragraph are given below in jumbled order. Arrange the sentences in the correct order to form a meaningful and coherent paragraph.

A. This condition was honoured by all except Ajab Singh, who added columns to the fort that cast a shadow on the ascetic's house.

B. The angry sadhu's curse led to the ruin of the fort and the surrounding villages.

C. There was a sadhu, Guru Balu Nath, living on top of the hill on which Raja Bhagwant Singh built the fort.

D. His only condition for letting the fort be built there was that it should never cast a shadow on his dwelling.

Ans 1. DCBA

2. CDAB

3. CBAD

4. ADCB

Question ID : 630680304416
 Option 1 ID : 6306801184228
 Option 2 ID : 6306801184226
 Option 3 ID : 6306801184227
 Option 4 ID : 6306801184225
 Status : Answered
 Chosen Option : 3

Q.3 Select the most appropriate ANTONYM of the given word.

Terse

Ans 1. Condensed

2. Succinct

3. Verbose

4. Laconic

Question ID : 630680304404
 Option 1 ID : 6306801184178
 Option 2 ID : 6306801184180
 Option 3 ID : 6306801184177
 Option 4 ID : 6306801184179
 Status : Answered
 Chosen Option : 1

Q.4 Select the option that can replace the underlined word correctly. If you don't find any error, mark 'No error' as your answer.

The real issues that the common man faces, have all been put in the back burner.

Ans 1. on

2. No error

3. behind

4. at

Question ID : 630680304428
 Option 1 ID : 6306801184274
 Option 2 ID : 6306801184276
 Option 3 ID : 6306801184275
 Option 4 ID : 6306801184273
 Status : Answered
 Chosen Option : 1

Q.5 Some words from the following sentence have been given as options. Select the option that contains a spelling error.

The flowering shrubs are the hunting ground of the munia birds, which come in flocks, chattering incessantly while they hop about.

- Ans
- 1. chattering
 - 2. incessantly
 - 3. flowering
 - 4. shrubs

Question ID : 630680304409
Option 1 ID : 6306801184199
Option 2 ID : 6306801184200
Option 3 ID : 6306801184197
Option 4 ID : 6306801184198
Status : Answered
Chosen Option : 2

Q.6 Some words from the following sentence have been given as options. Select the option that contains a spelling error.

The official was beaten after he detected pilfrage of petroleum products in Nashik district.

- Ans
- 1. pilfrage
 - 2. detected
 - 3. petroleum
 - 4. official

Question ID : 630680304413
Option 1 ID : 6306801184215
Option 2 ID : 6306801184214
Option 3 ID : 6306801184216
Option 4 ID : 6306801184213
Status : Answered
Chosen Option : 1

Q.7 Select the most appropriate synonym of the given word.

Tenacious

- Ans
- 1. Afraid
 - 2. Irresolute
 - 3. Determined
 - 4. Weak

Question ID : 630680304399
Option 1 ID : 6306801184160
Option 2 ID : 6306801184159
Option 3 ID : 6306801184157
Option 4 ID : 6306801184158
Status : Answered
Chosen Option : 2

Q.8 Select the most appropriate synonym of the given word.

Wane

- Ans 1. Diminish
 2. Ascend
 3. Grow
 4. Raise

Question ID : 630680304398
 Option 1 ID : 6306801184155
 Option 2 ID : 6306801184153
 Option 3 ID : 6306801184156
 Option 4 ID : 6306801184154
 Status : Answered
 Chosen Option : 1

Q.9 Sentences of a paragraph are given below in jumbled order. Arrange the sentences in the correct order to form a meaningful and coherent paragraph.

- A. Purchasing water or waiting for the unreliable tanker, though costly, was the only alternative.
 B. As a pre-teen on the cusp of getting married, Malti queued up for an hour with her mother before it was their turn at the hand pump.
 C. The private wells of neighbours, though nearby, continue to be out of reach.
 D. If the hand pump was broken/empty, they walked 2.5 kilometres to the public well that promised longer queues and worse quality, losing four-five hours to collect water.

- Ans 1. ABCD
 2. BDCA
 3. ACBD
 4. DCAB

Question ID : 630680304417
 Option 1 ID : 6306801184229
 Option 2 ID : 6306801184231
 Option 3 ID : 6306801184232
 Option 4 ID : 6306801184230
 Status : Answered
 Chosen Option : 3

Q.10 Some words from the following sentence have been given as options. Select the option that contains a spelling error.

Several Indians have ended their lives owing to harasment by recovery agents of unregulated digital lending apps mostly linked to entities based in China.

- Ans 1. owing
 2. harasment
 3. unregulated
 4. entities

Question ID : 630680304410
 Option 1 ID : 6306801184201
 Option 2 ID : 6306801184202
 Option 3 ID : 6306801184203
 Option 4 ID : 6306801184204
 Status : Answered
 Chosen Option : 2

Q.11 Some words from the following sentence have been given as options. Select the option that contains a spelling error.

Probe agencies are now cracking the whip on such apps that lure customers into debt traps by offering quick loans.

- Ans
- 1. whip
 - 2. lure
 - 3. agencies
 - 4. cracking

Question ID : 630680304412
Option 1 ID : 6306801184211
Option 2 ID : 6306801184212
Option 3 ID : 6306801184209
Option 4 ID : 6306801184210
Status : Answered
Chosen Option : 3

Q.12 Sentences of a paragraph are given below in jumbled order. Arrange the sentences in the correct order to form a meaningful and coherent paragraph.

- A. Domestic drudgery threatens women's physical safety.
- B. Though women bear these burdens for their family, drudgery also means less time devoted to childcare.
- C. It also affects women from an early age.
- D. It has severe consequences: exhaustion, musculoskeletal disorders, lower immunity, and higher mental stress.

- Ans
- 1. CABD
 - 2. DBCA
 - 3. BCDA
 - 4. ACDB

Question ID : 630680304418
Option 1 ID : 6306801184236
Option 2 ID : 6306801184235
Option 3 ID : 6306801184234
Option 4 ID : 6306801184233
Status : Answered
Chosen Option : 4

Q.13 Select the most appropriate ANTONYM of the given word.

Munificent

- Ans
- 1. Liberal
 - 2. Uncharitable
 - 3. Bounteous
 - 4. Magnanimous

Question ID : 630680304408
Option 1 ID : 6306801184194
Option 2 ID : 6306801184193
Option 3 ID : 6306801184196
Option 4 ID : 6306801184195
Status : Answered
Chosen Option : 1

Q.14 Some words from the following sentence have been given as options. Select the option that contains a spelling error.

Once they reach their destinations, the distance and valocity of the birds are measured to determine the winner of the race.

- Ans
- 1. destinations
 - 2. valocity
 - 3. measured
 - 4. determine

Question ID : 630680304411
 Option 1 ID : 6306801184205
 Option 2 ID : 6306801184206
 Option 3 ID : 6306801184207
 Option 4 ID : 6306801184208
 Status : Answered
 Chosen Option : 2

Q.15 Sentences of a paragraph are given below in jumbled order. Arrange the sentences in the correct order to form a meaningful and coherent paragraph.

- A. "Your booked speaker has not come and so I propose to engage you for the next three hours. Please tell me what topic you would like me to speak?"
- B. Glum with hearing departmental subjects, I proposed a simple topic, which looked silly for the occasion, amid explosive laughter of the class members.
- C. My interest in public speaking started to grow the day I happened to listen to an unscheduled lecture by the chief of a training institution a few decades ago.
- D. We trainees stood up bewildered when he entered our class suddenly one day and spoke in his metallic voice.

- Ans
- 1. ABCD
 - 2. CDAB
 - 3. DBCA
 - 4. CABD

Question ID : 630680304424
 Option 1 ID : 6306801184257
 Option 2 ID : 6306801184258
 Option 3 ID : 6306801184259
 Option 4 ID : 6306801184260
 Status : Answered
 Chosen Option : 4

Q.16 Select the most appropriate ANTONYM of the given word.

Vilify

- Ans
- 1. Berate
 - 2. Abuse
 - 3. Glorify
 - 4. Disparage

Question ID : 630680304405
 Option 1 ID : 6306801184181
 Option 2 ID : 6306801184182
 Option 3 ID : 6306801184183
 Option 4 ID : 6306801184184
 Status : Answered
 Chosen Option : 1

Q.17 Sentences of a paragraph are given below in jumbled order. Arrange the sentences in the correct order to form a meaningful and coherent paragraph.

- A. He is like the millions of young men and women whose earnings were cruelly hit by the pandemic.
- B. With the remarkable resilience of most of these people with no regular job, Manju turned to supplying flowers to supplement his income from sundry jobs.
- C. He lives not far from our home.
- D. Manju is a young man.

- Ans
- 1. CADB
 - 2. DCAB
 - 3. ABCD
 - 4. CBDA

Question ID : 630680304421
Option 1 ID : 6306801184248
Option 2 ID : 6306801184246
Option 3 ID : 6306801184245
Option 4 ID : 6306801184247
Status : Answered
Chosen Option : 2

Q.18 Select the most appropriate option to fill in the blanks.

She pointed _____ a cottage at the back of _____ the garden _____ the house.

- Ans
- 1. at; in; at
 - 2. to; of; behind
 - 3. to; into; to
 - 4. into; in; behind

Question ID : 630680304435
Option 1 ID : 6306801184302
Option 2 ID : 6306801184301
Option 3 ID : 6306801184303
Option 4 ID : 6306801184304
Status : Answered
Chosen Option : 1

Q.19 Sentences of a paragraph are given below in jumbled order. Arrange the sentences in the correct order to form a meaningful and coherent paragraph.

- A. Nikolai Gogol, the great 19th Century Russian writer, was a Ukrainian.
- B. I vaguely remembered the story and how it had overwhelmed me with the sad and bizarre plight of a petty government clerk.
- C. I didn't know that. I read it in an article in the wake of the Russia-Ukraine conflict.
- D. And I found myself smiling at the memory of my first encounter with Gogol's story The Overcoat, when I was barely 20.

- Ans
- 1. BCAD
 - 2. BACD
 - 3. CDBA
 - 4. ACDB

Question ID : 630680304423
Option 1 ID : 6306801184253
Option 2 ID : 6306801184255
Option 3 ID : 6306801184254
Option 4 ID : 6306801184256
Status : Answered
Chosen Option : 1

Q.20 Select the most appropriate option to fill in the blanks.

He has difficulties _____ his memory.

- Ans 1. from
 2. with
 3. of
 4. about

Question ID : 630680304436
Option 1 ID : 6306801184307
Option 2 ID : 6306801184306
Option 3 ID : 6306801184305
Option 4 ID : 6306801184308
Status : Answered
Chosen Option : 3

Q.21 Select the option that can replace the underlined word correctly. If you don't find any error, mark 'No error' as your answer.

The authorities erected barricades through the pavements in the vicinity of Buckingham Palace.

- Ans 1. No error
 2. from
 3. by
 4. along

Question ID : 630680304429
Option 1 ID : 6306801184280
Option 2 ID : 6306801184279
Option 3 ID : 6306801184278
Option 4 ID : 6306801184277
Status : Answered
Chosen Option : 4

Q.22 Select the most appropriate synonym of the given word.

Nonchalant

- Ans 1. Energetic
 2. Impassioned
 3. Lackadaisical
 4. Agile

Question ID : 630680304402
Option 1 ID : 6306801184170
Option 2 ID : 6306801184172
Option 3 ID : 6306801184171
Option 4 ID : 6306801184169
Status : Answered
Chosen Option : 2

Q.23 Select the most appropriate option to fill in the blanks.

My father had no interest _____ what people wore and even less _____ his own appearance.

- Ans 1. in; in
 2. into; in
 3. at; in
 4. in; at

Question ID : 630680304437
Option 1 ID : 6306801184310
Option 2 ID : 6306801184312
Option 3 ID : 6306801184309
Option 4 ID : 6306801184311
Status : Answered
Chosen Option : 4

Q.24 Select the most appropriate ANTONYM of the given word.

Palatable

- Ans 1. Repulsive
 2. Delectable
 3. Tempting
 4. Appetising

Question ID : 630680304403
Option 1 ID : 6306801184176
Option 2 ID : 6306801184175
Option 3 ID : 6306801184173
Option 4 ID : 6306801184174
Status : Answered
Chosen Option : 4

Q.25 Select the most appropriate synonym of the given word.

Squalid

- Ans 1. Fetid
 2. Honourable
 3. Sterile
 4. Bright

Question ID : 630680304401
Option 1 ID : 6306801184167
Option 2 ID : 6306801184168
Option 3 ID : 6306801184166
Option 4 ID : 6306801184165
Status : Answered
Chosen Option : 3

Q.26 Select the most appropriate option to fill in the blanks.

_____ the two wicket-keepers in the Indian team _____ the World T20 in Australia next month, one has his role clear-cut while the other is still working it out.

- Ans
- 1. By; for
 - 2. With; of
 - 3. Between; of
 - 4. Of; for

Question ID : 630680304434
Option 1 ID : 6306801184297
Option 2 ID : 6306801184299
Option 3 ID : 6306801184298
Option 4 ID : 6306801184300
Status : Answered
Chosen Option : 1

Q.27 Some words from the following sentence have been given as options. Select the option that contains a spelling error.

In a 10-day long operation across 22 cities, 30 people were arrested while 35 others were issued warrants and asked to join the probe for duping over 200 people on the pretext of paying their electricity bills.

- Ans
- 1. electricity
 - 2. operation
 - 3. prectect
 - 4. warrants

Question ID : 630680304415
Option 1 ID : 6306801184224
Option 2 ID : 6306801184221
Option 3 ID : 6306801184223
Option 4 ID : 6306801184222
Status : Answered
Chosen Option : 3

Q.28 Select the option that can replace the underlined word correctly. If you don't find any error, mark 'No error' as your answer.

Which monarch was the most featured woman by a banknote worldwide?

- Ans
- 1. outside
 - 2. in
 - 3. on
 - 4. No error

Question ID : 630680304430
Option 1 ID : 6306801184282
Option 2 ID : 6306801184281
Option 3 ID : 6306801184283
Option 4 ID : 6306801184284
Status : Answered
Chosen Option : 2

Q.29 Sentences of a paragraph are given below in jumbled order. Arrange the sentences in the correct order to form a meaningful and coherent paragraph.

- A. She was a daughter of Zeus, the chief God of the Olympians, who ruled the world from the summit of Mount Olympus.
B. Artemis was a virgin goddess of the wilderness and hunting and her independence and strength have long inspired women in a wide range of activities.
C. She was also the twin sister of Apollo, God of the Sun and oracles.
D. Artemis was a major deity in ancient Greece, worshiped at least as early as the beginning of the first millennium BC, or even earlier.

- Ans 1. ABCD
 2. DACB
 3. CBDA
 4. CABD

Question ID : 630680304419
Option 1 ID : 6306801184237
Option 2 ID : 6306801184239
Option 3 ID : 6306801184240
Option 4 ID : 6306801184238
Status : Answered
Chosen Option : 2

Q.30 Some words from the following sentence have been given as options. Select the option that contains a spelling error.

A woman fought off a juvenile who attempted to snatch her mobile phone in south-East Delhi's Badarpur, the police said. The snatcher has been apprehended.

- Ans 1. attempted
 2. juvenile
 3. snatch
 4. apprehended

Question ID : 630680304414
Option 1 ID : 6306801184218
Option 2 ID : 6306801184217
Option 3 ID : 6306801184219
Option 4 ID : 6306801184220
Status : Answered
Chosen Option : 2

Q.31 Select the most appropriate option to fill in the blanks.

Squid Game, the bold South Korean drama is _____ the idle rich turning the poor _____ entertainment fodder.

- Ans 1. for; among
 2. about; into
 3. by; into
 4. from; in

Question ID : 630680304433
Option 1 ID : 6306801184296
Option 2 ID : 6306801184294
Option 3 ID : 6306801184293
Option 4 ID : 6306801184295
Status : Answered
Chosen Option : 2

Q.32 Select the most appropriate synonym of the given word.

Rout

- Ans 1. Triumph
 2. Miracle
 3. Debacle
 4. Win

Question ID : 630680304400

Option 1 ID : 6306801184161

Option 2 ID : 6306801184164

Option 3 ID : 6306801184162

Option 4 ID : 6306801184163

Status : Answered

Chosen Option : 3

Q.33 Sentences of a paragraph are given below in jumbled order. Arrange the sentences in the correct order to form a meaningful and coherent paragraph.

- A. It beats video games any day.
B. They wait for an unwary fish to poke its head above the sluggishly moving water.
C. An irrigation canal runs along one side of our property and kingfishers often sit patiently on the wall.
D. Then there's a sudden dart of brilliant blue, followed by a triumphant rise with a glint of silver in the bird's beak.

- Ans 1. DABC
 2. ACDB
 3. CBDA
 4. CABD

Question ID : 630680304425

Option 1 ID : 6306801184262

Option 2 ID : 6306801184263

Option 3 ID : 6306801184261

Option 4 ID : 6306801184264

Status : Answered

Chosen Option : 3

Q.34 Select the option that can replace the underlined word correctly. If you don't find any error, mark 'No error' as your answer.

Compared to the impressive main house, the cottage was modest of the point of being shabby.

- Ans 1. at
 2. by
 3. to
 4. No error

Question ID : 630680304432

Option 1 ID : 6306801184290

Option 2 ID : 6306801184289

Option 3 ID : 6306801184291

Option 4 ID : 6306801184292

Status : Answered

Chosen Option : 2

Q.35 Sentences of a paragraph are given below in jumbled order. Arrange the sentences in the correct order to form a meaningful and coherent paragraph.

- A. They were able to decipher the messages the landscape was communicating with them through its inhabitants.
B. For their project 'Ears to the ground', musicians Krishna Jhaveri and Sanaya Ardeshir travelled through the Western Ghats recording natural sounds from the wild and interviewing people living in these landscapes.
C. During their journey, they learned of the mountains' unique ecology and through 'deep listening'.
D. Over an almost three-month-long journey, Krishna and Sanaya, armed with field recorders, listened to the sounds of one of the world's oldest mountain ranges.

- Ans 1. ABDC
 2. BACD
 3. BDCA
 4. CDBA

Question ID : 630680304420
Option 1 ID : 6306801184242
Option 2 ID : 6306801184244
Option 3 ID : 6306801184241
Option 4 ID : 6306801184243
Status : Answered
Chosen Option : 3

Q.36 Select the most appropriate ANTONYM of the given word.

Spurious

- Ans 1. Phony
 2. Fake
 3. Genuine
 4. Counterfeit

Question ID : 630680304406
Option 1 ID : 6306801184188
Option 2 ID : 6306801184186
Option 3 ID : 6306801184185
Option 4 ID : 6306801184187
Status : Answered
Chosen Option : 3

Q.37 Select the option that can replace the underlined word correctly. If you don't find any error, mark 'No error' as your answer.

The city police made arrests for protesting against the authorities.

- Ans 1. across
 2. No error
 3. by
 4. from

Question ID : 630680304431
Option 1 ID : 6306801184287
Option 2 ID : 6306801184288
Option 3 ID : 6306801184285
Option 4 ID : 6306801184286
Status : Answered
Chosen Option : 2

Q.38 Sentences of a paragraph are given below in jumbled order. Arrange the sentences in the correct order to form a meaningful and coherent paragraph.

- A. This is 2022, and over the two bygone years, social media has well outgrown the raison d'être for its emergence, that is 'connectivity'.
 B. Not only that, your profile reflects your 'social media personality', that said, is there such a thing as a 'social media personality' distinct from your real self?
 C. Unfortunately, most users project an image of themselves which is far removed from their true self.
 D. Now it is a potential tool to find you new jobs, bring you the top news of the day, crack you with memes and trolls, pontificate your thoughts or even find your prince or princess charming.

- Ans 1. ACBD
 2. BADC
 3. DCBA
 4. ADBC

Question ID : 630680304422
 Option 1 ID : 6306801184249
 Option 2 ID : 6306801184252
 Option 3 ID : 6306801184250
 Option 4 ID : 6306801184251
 Status : Answered
 Chosen Option : 4

Q.39 Select the option that can replace the underlined word correctly. If you don't find any error, mark 'No error' as your answer.

A Class VI student, was returning home from school for her two friends when the incident took place.

- Ans 1. to
 2. with
 3. No error
 4. between

Question ID : 630680304426
 Option 1 ID : 6306801184265
 Option 2 ID : 6306801184266
 Option 3 ID : 6306801184268
 Option 4 ID : 6306801184267
 Status : Answered
 Chosen Option : 2

Q.40 Select the most appropriate ANTONYM of the given word.

Decipher

- Ans 1. Elucidate
 2. Interpret
 3. Construe
 4. Conceal

Question ID : 630680304407
 Option 1 ID : 6306801184191
 Option 2 ID : 6306801184189
 Option 3 ID : 6306801184192
 Option 4 ID : 6306801184190
 Status : Answered
 Chosen Option : 2

Comprehension:

Read the given passage and answer the questions that follow.

Unlike conventional pigeon races, wherein the finishing points differ, One Loft Races have the same starting and finishing points. Pigeons, typically less than six weeks old, are taken to the special loft to be used for the event before they can fly. The birds then slowly learn to fly and recognise this loft as their home. The training, food, and conditions are the same for all the birds. With the usage of electronic timing systems, the winners of One Loft Races are decided by as little as 100th of a second.

It is a smoggy April morning in Signature Bridge, Delhi. Three men unshackle 26 trained homing pigeons kept in two rectangular cages on an empty ground. Two more men hold a banner that says Karnataka Homing Pigeon Federation in English and Kannada. As both the cages are simultaneously opened, the birds slowly walk out, flap their wings and take off. From this starting point, where they have never been before, they need to find their way back to their respective lofts, over 1,500 kilometres away. Once they reach their destinations, the distance and velocity of the birds are measured to determine the winner of the race.

Among the participants is Red Rocket, a three-year-old grey-headed pigeon with a white-and-brown plume. Like his competitors, he, too, bears a red seal on his wings and two rubber bands on his legs. After nine days of flight, on April 24, 2022, the pigeon reaches his loft at Shanker V's residence in Hennur Gardens, Bengaluru. Shanker, a pigeon fancier, immediately removes the bands from his bird's legs to reveal an identification number. He clicks a photo and sends it to the organisers, who verify the numbers, measure the distance covered and the velocity of its flight.

Red Rocket, they announce, has flown 1,741 kilometres at 251 metres per minute, making him the winner. The pigeon had never been this far from his nest. Yet, he does what he always has: find his way back home.

This extraordinary capability is a result of magnetoreception, wherein animals and birds orient and navigate using the earth's magnetic field. At one point, humans selectively bred pigeons for their extraordinary ability. This led to the creation of a breed of homing pigeons, used for communication and later racing.

SubQuestion No : 41

Q.41 Select the option that is true according to the passage.

- Ans**
- 1. In traditional pigeon races the finishing points are not the same.
 - 2. In One Loft Race the winners are decided by a tenth of a second.
 - 3. Adult pigeons participate in One Loft Race.
 - 4. The pigeons raised in the same loft recognise their loft very early in their training.

Question ID : 630680304440

Option 1 ID : 6306801184317

Option 2 ID : 6306801184319

Option 3 ID : 6306801184318

Option 4 ID : 6306801184320

Status : Answered

Chosen Option : 4

Comprehension:

Read the given passage and answer the questions that follow.

Unlike conventional pigeon races, wherein the finishing points differ, One Loft Races have the same starting and finishing points. Pigeons, typically less than six weeks old, are taken to the special loft to be used for the event before they can fly. The birds then slowly learn to fly and recognise this loft as their home. The training, food, and conditions are the same for all the birds. With the usage of electronic timing systems, the winners of One Loft Races are decided by as little as 100th of a second.

It is a smoggy April morning in Signature Bridge, Delhi. Three men unshackle 26 trained homing pigeons kept in two rectangular cages on an empty ground. Two more men hold a banner that says Karnataka Homing Pigeon Federation in English and Kannada. As both the cages are simultaneously opened, the birds slowly walk out, flap their wings and take off. From this starting point, where they have never been before, they need to find their way back to their respective lofts, over 1,500 kilometres away. Once they reach their destinations, the distance and velocity of the birds are measured to determine the winner of the race.

Among the participants is Red Rocket, a three-year-old grey-headed pigeon with a white-and-brown plume. Like his competitors, he, too, bears a red seal on his wings and two rubber bands on his legs. After nine days of flight, on April 24, 2022, the pigeon reaches his loft at Shanker V's residence in Hennur Gardens, Bengaluru. Shanker, a pigeon fancier, immediately removes the bands from his bird's legs to reveal an identification number. He clicks a photo and sends it to the organisers, who verify the numbers, measure the distance covered and the velocity of its flight.

Red Rocket, they announce, has flown 1,741 kilometres at 251 metres per minute, making him the winner. The pigeon had never been this far from his nest. Yet, he does what he always has: find his way back home.

This extraordinary capability is a result of magnetoreception, wherein animals and birds orient and navigate using the earth's magnetic field. At one point, humans selectively bred pigeons for their extraordinary ability. This led to the creation of a breed of homing pigeons, used for communication and later racing.

SubQuestion No : 42

Q.42 This extraordinary capability is a result of magnetoreception....

What does 'this extraordinary capability' refer to?

- Ans**
- 1. Using magnetoreception for communication.
 - 2. Humans selectively breeding pigeons for racing.
 - 3. Pigeons travelling very long distances and coming back to their homes.
 - 4. Using magnetoreception for racing.

Question ID : 630680304443

Option 1 ID : 6306801184330

Option 2 ID : 6306801184332

Option 3 ID : 6306801184329

Option 4 ID : 6306801184331

Status : Answered

Chosen Option : 3

Comprehension:

Read the given passage and answer the questions that follow.

Unlike conventional pigeon races, wherein the finishing points differ, One Loft Races have the same starting and finishing points. Pigeons, typically less than six weeks old, are taken to the special loft to be used for the event before they can fly. The birds then slowly learn to fly and recognise this loft as their home. The training, food, and conditions are the same for all the birds. With the usage of electronic timing systems, the winners of One Loft Races are decided by as little as 100th of a second.

It is a smoggy April morning in Signature Bridge, Delhi. Three men unshackle 26 trained homing pigeons kept in two rectangular cages on an empty ground. Two more men hold a banner that says Karnataka Homing Pigeon Federation in English and Kannada. As both the cages are simultaneously opened, the birds slowly walk out, flap their wings and take off. From this starting point, where they have never been before, they need to find their way back to their respective lofts, over 1,500 kilometres away. Once they reach their destinations, the distance and velocity of the birds are measured to determine the winner of the race.

Among the participants is Red Rocket, a three-year-old grey-headed pigeon with a white-and-brown plume. Like his competitors, he, too, bears a red seal on his wings and two rubber bands on his legs. After nine days of flight, on April 24, 2022, the pigeon reaches his loft at Shanker V's residence in Hennur Gardens, Bengaluru. Shanker, a pigeon fancier, immediately removes the bands from his bird's legs to reveal an identification number. He clicks a photo and sends it to the organisers, who verify the numbers, measure the distance covered and the velocity of its flight.

Red Rocket, they announce, has flown 1,741 kilometres at 251 metres per minute, making him the winner. The pigeon had never been this far from his nest. Yet, he does what he always has: find his way back home.

This extraordinary capability is a result of magnetoreception, wherein animals and birds orient and navigate using the earth's magnetic field. At one point, humans selectively bred pigeons for their extraordinary ability. This led to the creation of a breed of homing pigeons, used for communication and later racing.

SubQuestion No : 43

Q.43 Select the option that completes the statement correctly.

The race is called One Loft Race because all the pigeons are:

- Ans
- 1. tracked by using an electronic timing device
 - 2. given the same training and food
 - 3. less than six weeks old
 - 4. raised and trained in the same loft

Question ID : 630680304439

Option 1 ID : 6306801184316

Option 2 ID : 6306801184314

Option 3 ID : 6306801184313

Option 4 ID : 6306801184315

Status : Answered

Chosen Option : 2

Comprehension:

Read the given passage and answer the questions that follow.

Unlike conventional pigeon races, wherein the finishing points differ, One Loft Races have the same starting and finishing points. Pigeons, typically less than six weeks old, are taken to the special loft to be used for the event before they can fly. The birds then slowly learn to fly and recognise this loft as their home. The training, food, and conditions are the same for all the birds. With the usage of electronic timing systems, the winners of One Loft Races are decided by as little as 100th of a second.

It is a smoggy April morning in Signature Bridge, Delhi. Three men unshackle 26 trained homing pigeons kept in two rectangular cages on an empty ground. Two more men hold a banner that says Karnataka Homing Pigeon Federation in English and Kannada. As both the cages are simultaneously opened, the birds slowly walk out, flap their wings and take off. From this starting point, where they have never been before, they need to find their way back to their respective lofts, over 1,500 kilometres away. Once they reach their destinations, the distance and velocity of the birds are measured to determine the winner of the race.

Among the participants is Red Rocket, a three-year-old grey-headed pigeon with a white-and-brown plume. Like his competitors, he, too, bears a red seal on his wings and two rubber bands on his legs. After nine days of flight, on April 24, 2022, the pigeon reaches his loft at Shanker V's residence in Hennur Gardens, Bengaluru. Shanker, a pigeon fancier, immediately removes the bands from his bird's legs to reveal an identification number. He clicks a photo and sends it to the organisers, who verify the numbers, measure the distance covered and the velocity of its flight.

Red Rocket, they announce, has flown 1,741 kilometres at 251 metres per minute, making him the winner. The pigeon had never been this far from his nest. Yet, he does what he always has: find his way back home.

This extraordinary capability is a result of magnetoreception, wherein animals and birds orient and navigate using the earth's magnetic field. At one point, humans selectively bred pigeons for their extraordinary ability. This led to the creation of a breed of homing pigeons, used for communication and later racing.

SubQuestion No : 44

Q.44 Select the option that completes the statement correctly.

A homing pigeon is one that:

- Ans**
- 1. finds its way back to its loft
 - 2. never leaves its loft
 - 3. travels a great distance in one go
 - 4. is kept as a pet at home

Question ID : 630680304442

Option 1 ID : 6306801184327

Option 2 ID : 6306801184326

Option 3 ID : 6306801184328

Option 4 ID : 6306801184325

Status : Answered

Chosen Option : 4

Comprehension:

Read the given passage and answer the questions that follow.

Unlike conventional pigeon races, wherein the finishing points differ, One Loft Races have the same starting and finishing points. Pigeons, typically less than six weeks old, are taken to the special loft to be used for the event before they can fly. The birds then slowly learn to fly and recognise this loft as their home. The training, food, and conditions are the same for all the birds. With the usage of electronic timing systems, the winners of One Loft Races are decided by as little as 100th of a second.

It is a smoggy April morning in Signature Bridge, Delhi. Three men unshackle 26 trained homing pigeons kept in two rectangular cages on an empty ground. Two more men hold a banner that says Karnataka Homing Pigeon Federation in English and Kannada. As both the cages are simultaneously opened, the birds slowly walk out, flap their wings and take off. From this starting point, where they have never been before, they need to find their way back to their respective lofts, over 1,500 kilometres away. Once they reach their destinations, the distance and velocity of the birds are measured to determine the winner of the race.

Among the participants is Red Rocket, a three-year-old grey-headed pigeon with a white-and-brown plume. Like his competitors, he, too, bears a red seal on his wings and two rubber bands on his legs. After nine days of flight, on April 24, 2022, the pigeon reaches his loft at Shanker V's residence in Hennur Gardens, Bengaluru. Shanker, a pigeon fancier, immediately removes the bands from his bird's legs to reveal an identification number. He clicks a photo and sends it to the organisers, who verify the numbers, measure the distance covered and the velocity of its flight.

Red Rocket, they announce, has flown 1,741 kilometres at 251 metres per minute, making him the winner. The pigeon had never been this far from his nest. Yet, he does what he always has: find his way back home.

This extraordinary capability is a result of magnetoreception, wherein animals and birds orient and navigate using the earth's magnetic field. At one point, humans selectively bred pigeons for their extraordinary ability. This led to the creation of a breed of homing pigeons, used for communication and later racing.

SubQuestion No : 45

Q.45 All options are synonyms of 'unshackle'. Select the option that is correct as used in the passage.

- Ans** 1. Discharge
 2. Release
 3. Spare
 4. Clear

Question ID : 630680304441

Option 1 ID : 6306801184324

Option 2 ID : 6306801184322

Option 3 ID : 6306801184321

Option 4 ID : 6306801184323

Status : Answered

Chosen Option : 3

Comprehension:

Read the given passage and answer the questions that follow.

At an exhibition, one of the several taking place in Kolkata to mark 75 years of India's Independence, the organisers placed a bundle of postcards and a handful of pens on a large table and asked visitors to write down their family memories of that defining moment in history. What has emerged is a still-growing collection of heart-warming as well as heart-wrenching stories that may not be found in history books but are still a valuable part of history. "My late grandfather's account of 15th August is rather funny," wrote Gangotri Chattopadhyay from Singur in her message. "A bunch of village kids with no money or resources stole a bunch of gamchha (thin cotton towel) and hoisted them on a bunch of sticks and ran through the rice fields, overjoyed about a free India. It is the spirit that counts." Ms. Chattopadhyay's is among the nearly 600 postcards that the DAG, or Delhi Art Gallery, has collected so far from its ongoing exhibition, 'March to Freedom', being held at the Indian Museum. The exhibition, showcasing 200 years of art, began on July 23 and will end on September 18. In one gallery, a poster asks: "Do you know what your parents were doing on August 15, 1947? What are your family memories or experiences from the time of India's independence?" The response has been unexpected, what with fresh blank postcards and pens at hand. Diya's family memories go back to a painful period before Independence - the Bengal famine of 1943 and the Second World War - when her paternal grandmother, a little girl at the time, remembered the family eating rice with salt because everything else was unaffordable. The grandmother would narrate such stories "in the flicker of candlelight back when power cuts plagued Bengal in the early 2000s". At first, I wondered whether people would respond thoughtfully to the prompt but I was pleasantly surprised to see how much care people had taken to record their family stories. Like we had hoped, what emerges is the story of ordinary people who don't find a place in our history books but who grappled with the idea of becoming citizens of a new nation in myriad ways.

SubQuestion No : 46

Q.46 Select the option that is the meaning of the word 'myriad' as it is used in the passage.

- Ans**
- 1. Diversified
 - 2. Enormous
 - 3. Countless
 - 4. Huge

Question ID : 630680304446
Option 1 ID : 6306801184340
Option 2 ID : 6306801184338
Option 3 ID : 6306801184339
Option 4 ID : 6306801184337

Status : Answered

Chosen Option : 4

Comprehension:

Read the given passage and answer the questions that follow.

At an exhibition, one of the several taking place in Kolkata to mark 75 years of India's Independence, the organisers placed a bundle of postcards and a handful of pens on a large table and asked visitors to write down their family memories of that defining moment in history. What has emerged is a still-growing collection of heart-warming as well as heart-wrenching stories that may not be found in history books but are still a valuable part of history. "My late grandfather's account of 15th August is rather funny," wrote Gangotri Chattopadhyay from Singur in her message. "A bunch of village kids with no money or resources stole a bunch of gamchha (thin cotton towel) and hoisted them on a bunch of sticks and ran through the rice fields, overjoyed about a free India. It is the spirit that counts." Ms. Chattopadhyay's is among the nearly 600 postcards that the DAG, or Delhi Art Gallery, has collected so far from its ongoing exhibition, 'March to Freedom', being held at the Indian Museum. The exhibition, showcasing 200 years of art, began on July 23 and will end on September 18. In one gallery, a poster asks: "Do you know what your parents were doing on August 15, 1947? What are your family memories or experiences from the time of India's independence?" The response has been unexpected, what with fresh blank postcards and pens at hand. Diyaa's family memories go back to a painful period before Independence - the Bengal famine of 1943 and the Second World War - when her paternal grandmother, a little girl at the time, remembered the family eating rice with salt because everything else was unaffordable. The grandmother would narrate such stories "in the flicker of candlelight back when power cuts plagued Bengal in the early 2000s". At first, I wondered whether people would respond thoughtfully to the prompt but I was pleasantly surprised to see how much care people had taken to record their family stories. Like we had hoped, what emerges is the story of ordinary people who don't find a place in our history books but who grappled with the idea of becoming citizens of a new nation in myriad ways.

SubQuestion No : 47

Q.47 Select the statement that is NOT true according to the passage.

- Ans**
- 1. People only wrote stories about famine and poverty.
 - 2. The stories recounted are not part of any history books.
 - 3. 'March to freedom' displayed 200 hundred years of art.
 - 4. People wrote stories that were both touching and agonising.

Question ID : 630680304449

Option 1 ID : 6306801184350

Option 2 ID : 6306801184352

Option 3 ID : 6306801184351

Option 4 ID : 6306801184349

Status : Answered

Chosen Option : 1

Comprehension:

Read the given passage and answer the questions that follow.

At an exhibition, one of the several taking place in Kolkata to mark 75 years of India's Independence, the organisers placed a bundle of postcards and a handful of pens on a large table and asked visitors to write down their family memories of that defining moment in history. What has emerged is a still-growing collection of heart-warming as well as heart-wrenching stories that may not be found in history books but are still a valuable part of history. "My late grandfather's account of 15th August is rather funny," wrote Gangotri Chattopadhyay from Singur in her message. "A bunch of village kids with no money or resources stole a bunch of gamchha (thin cotton towel) and hoisted them on a bunch of sticks and ran through the rice fields, overjoyed about a free India. It is the spirit that counts." Ms. Chattopadhyay's is among the nearly 600 postcards that the DAG, or Delhi Art Gallery, has collected so far from its ongoing exhibition, 'March to Freedom', being held at the Indian Museum. The exhibition, showcasing 200 years of art, began on July 23 and will end on September 18. In one gallery, a poster asks: "Do you know what your parents were doing on August 15, 1947? What are your family memories or experiences from the time of India's independence?" The response has been unexpected, what with fresh blank postcards and pens at hand. Diyaa's family memories go back to a painful period before Independence - the Bengal famine of 1943 and the Second World War - when her paternal grandmother, a little girl at the time, remembered the family eating rice with salt because everything else was unaffordable. The grandmother would narrate such stories "in the flicker of candlelight back when power cuts plagued Bengal in the early 2000s". At first, I wondered whether people would respond thoughtfully to the prompt but I was pleasantly surprised to see how much care people had taken to record their family stories. Like we had hoped, what emerges is the story of ordinary people who don't find a place in our history books but who grappled with the idea of becoming citizens of a new nation in myriad ways.

SubQuestion No : 48

Q.48 Select the phrase in the passage which means the same as 'critically important'.

- Ans**
- 1. Valuable part of history
 - 2. The spirit that counts
 - 3. Becoming citizens of a new nation
 - 4. Defining moment

Question ID : 630680304445

Option 1 ID : 6306801184334

Option 2 ID : 6306801184335

Option 3 ID : 6306801184336

Option 4 ID : 6306801184333

Status : Answered

Chosen Option : 2

Comprehension:

Read the given passage and answer the questions that follow.

At an exhibition, one of the several taking place in Kolkata to mark 75 years of India's Independence, the organisers placed a bundle of postcards and a handful of pens on a large table and asked visitors to write down their family memories of that defining moment in history. What has emerged is a still-growing collection of heart-warming as well as heart-wrenching stories that may not be found in history books but are still a valuable part of history. "My late grandfather's account of 15th August is rather funny," wrote Gangotri Chattopadhyay from Singur in her message. "A bunch of village kids with no money or resources stole a bunch of gamchha (thin cotton towel) and hoisted them on a bunch of sticks and ran through the rice fields, overjoyed about a free India. It is the spirit that counts." Ms. Chattopadhyay's is among the nearly 600 postcards that the DAG, or Delhi Art Gallery, has collected so far from its ongoing exhibition, 'March to Freedom', being held at the Indian Museum. The exhibition, showcasing 200 years of art, began on July 23 and will end on September 18. In one gallery, a poster asks: "Do you know what your parents were doing on August 15, 1947? What are your family memories or experiences from the time of India's independence?" The response has been unexpected, what with fresh blank postcards and pens at hand. Diyaa's family memories go back to a painful period before Independence - the Bengal famine of 1943 and the Second World War - when her paternal grandmother, a little girl at the time, remembered the family eating rice with salt because everything else was unaffordable. The grandmother would narrate such stories "in the flicker of candlelight back when power cuts plagued Bengal in the early 2000s". At first, I wondered whether people would respond thoughtfully to the prompt but I was pleasantly surprised to see how much care people had taken to record their family stories. Like we had hoped, what emerges is the story of ordinary people who don't find a place in our history books but who grappled with the idea of becoming citizens of a new nation in myriad ways.

SubQuestion No : 49

Q.49 The kids hoisting gamchhas on sticks shows their:

- Ans
- 1. mischief
 - 2. resourcefulness
 - 3. bravery
 - 4. playfulness

Question ID : 630680304448
Option 1 ID : 6306801184348
Option 2 ID : 6306801184347
Option 3 ID : 6306801184346
Option 4 ID : 6306801184345

Status : Answered

Chosen Option : 2

Comprehension:

Read the given passage and answer the questions that follow.

At an exhibition, one of the several taking place in Kolkata to mark 75 years of India's Independence, the organisers placed a bundle of postcards and a handful of pens on a large table and asked visitors to write down their family memories of that defining moment in history. What has emerged is a still-growing collection of heart-warming as well as heart-wrenching stories that may not be found in history books but are still a valuable part of history. "My late grandfather's account of 15th August is rather funny," wrote Gangotri Chattopadhyay from Singur in her message. "A bunch of village kids with no money or resources stole a bunch of gamcha (thin cotton towel) and hoisted them on a bunch of sticks and ran through the rice fields, overjoyed about a free India. It is the spirit that counts." Ms. Chattopadhyay's is among the nearly 600 postcards that the DAG, or Delhi Art Gallery, has collected so far from its ongoing exhibition, 'March to Freedom', being held at the Indian Museum. The exhibition, showcasing 200 years of art, began on July 23 and will end on September 18. In one gallery, a poster asks: "Do you know what your parents were doing on August 15, 1947? What are your family memories or experiences from the time of India's independence?" The response has been unexpected, what with fresh blank postcards and pens at hand. Diya's family memories go back to a painful period before Independence - the Bengal famine of 1943 and the Second World War - when her paternal grandmother, a little girl at the time, remembered the family eating rice with salt because everything else was unaffordable. The grandmother would narrate such stories "in the flicker of candlelight back when power cuts plagued Bengal in the early 2000s". At first, I wondered whether people would respond thoughtfully to the prompt but I was pleasantly surprised to see how much care people had taken to record their family stories. Like we had hoped, what emerges is the story of ordinary people who don't find a place in our history books but who grappled with the idea of becoming citizens of a new nation in myriad ways.

SubQuestion No : 50

Q.50 At first, I wondered whether people would respond thoughtfully to the prompt....

What does 'prompt' in this sentence refer to?

- Ans
- 1. Ordinary people
 - 2. Power cuts
 - 3. Recording family histories
 - 4. Questions on the poster

Question ID : 630680304447
Option 1 ID : 6306801184342
Option 2 ID : 6306801184341
Option 3 ID : 6306801184344
Option 4 ID : 6306801184343

Status : Answered

Chosen Option : 3