

Paper Analysis

Shift-2

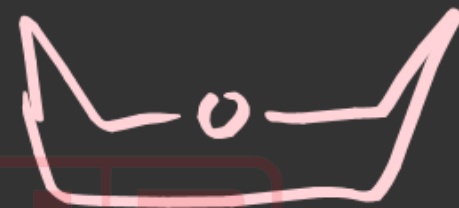
- PKa value → lysine ✓
→ Asp. ✓
→ Histidine ✓
- Glucose metabolism ??
- Lineweaver Burk Plot ??
- Enzyme Kinetics → Sugar Puckering
- Modification → AA → Match the column
(glycosylation, Phosphorylation)

Biochemistry



→ Sugar Puckering

→ Stability



→ C2 ends

→ C3 ends

Adda247

- α -Ketoglutarate
 - Succinate
- } TCA

* Cyclohexamide

↳ Antibiotic → Inhibit Protein Synthesis

- Base Excision Repair
 - Glycosylase
 - AP endo, PDE
 - DNA Pol β → Ligase

• A, B & Z DNA

(A) (B) (Z)

minor → narrow
major → flat

left handed

Right handed

major narrow
minor wide

major → wide
minor → narrow

Cell Signalling → Bacterial 2 Component
Synthesis.

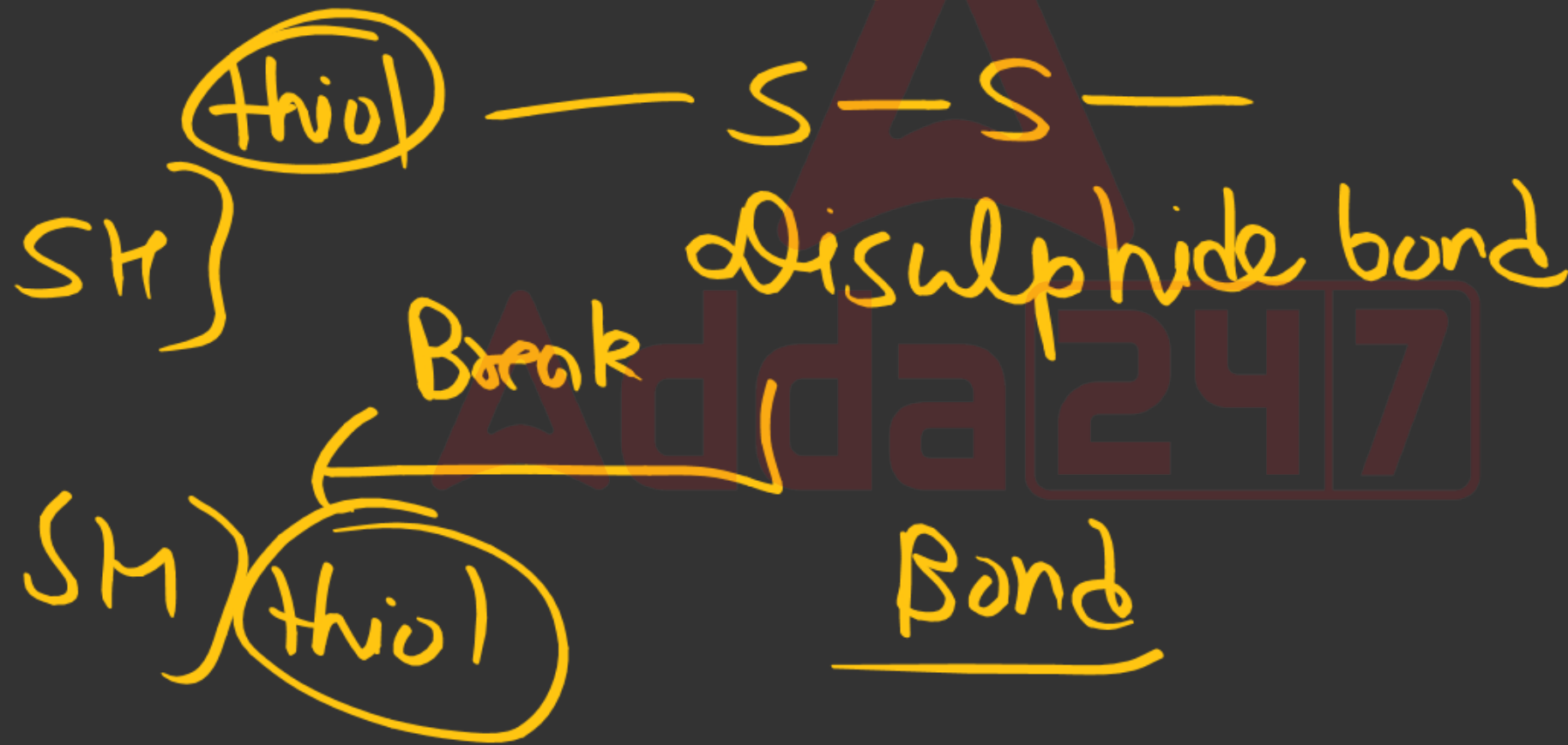


Adda247

DTT ⊕

Bond

→ covalent bond



Immunology

CD 44

CD 25



Adda247

PIQ → "Pendrin" → Crank course
↑
Thyroid biosynthesis

Adda247

Dev Bio

⇒ Planaria regeneration

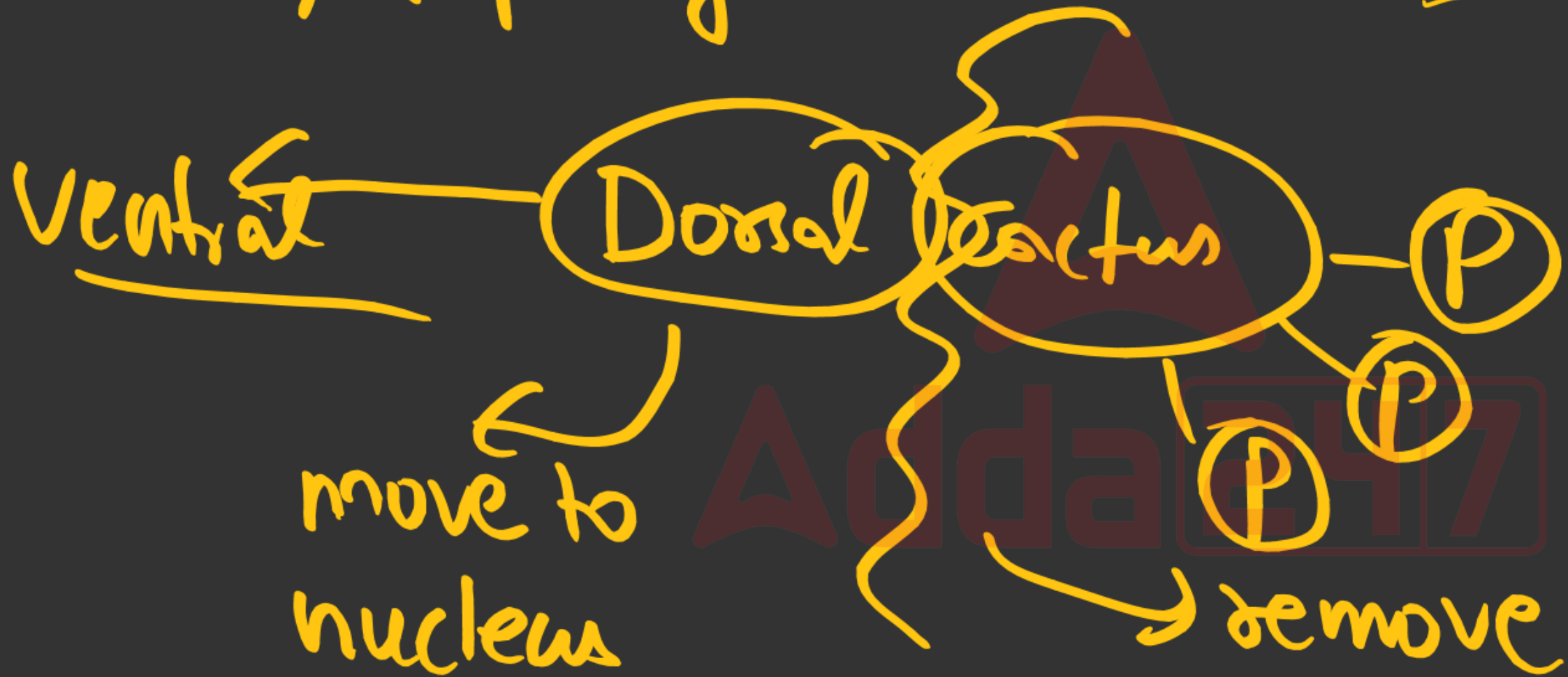
⇒ Drosophila → Musken protein

⇒ Wnt signalling

⇒ limb development → Hox genes
questions

Drosophila

=> Pipe synthesis → D-V axis



Tech

⇒ PCR

⇒ Primer designing

Adda247

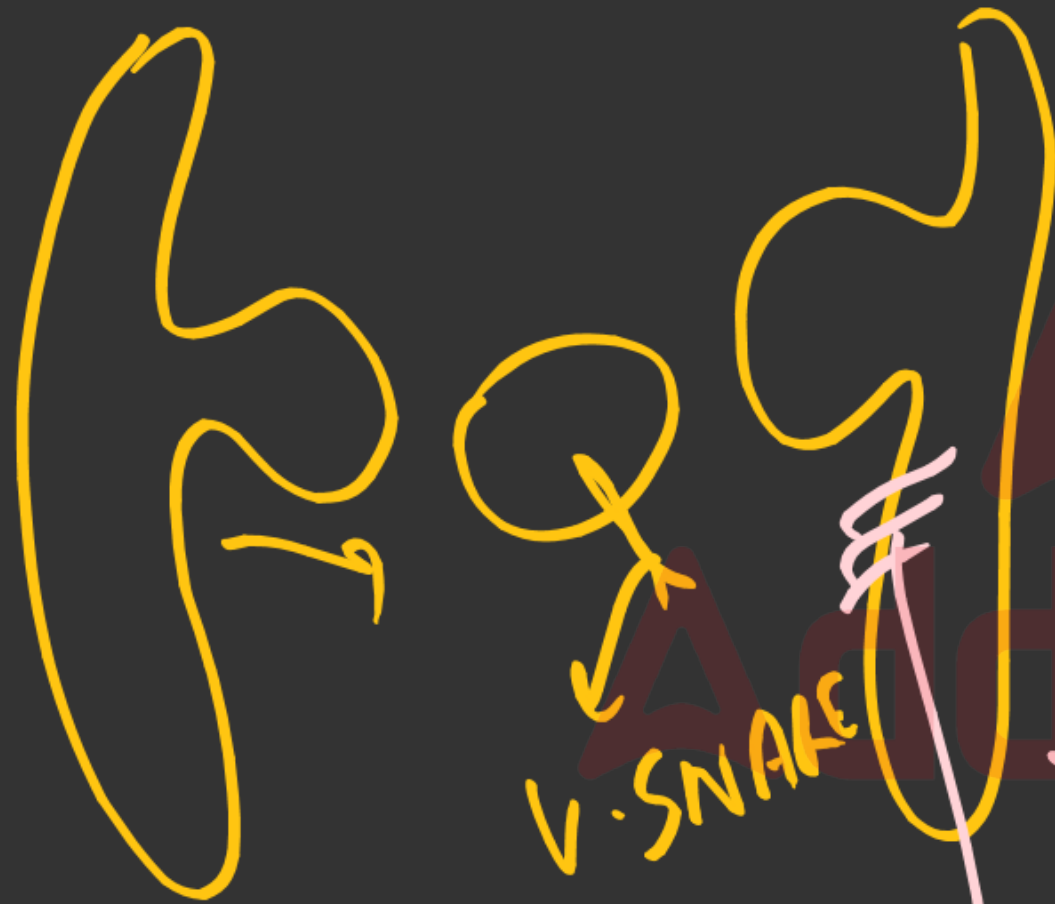
Cell Biology → Vesicular Transport

→ SNARE → ✓

→ KDEL sequence

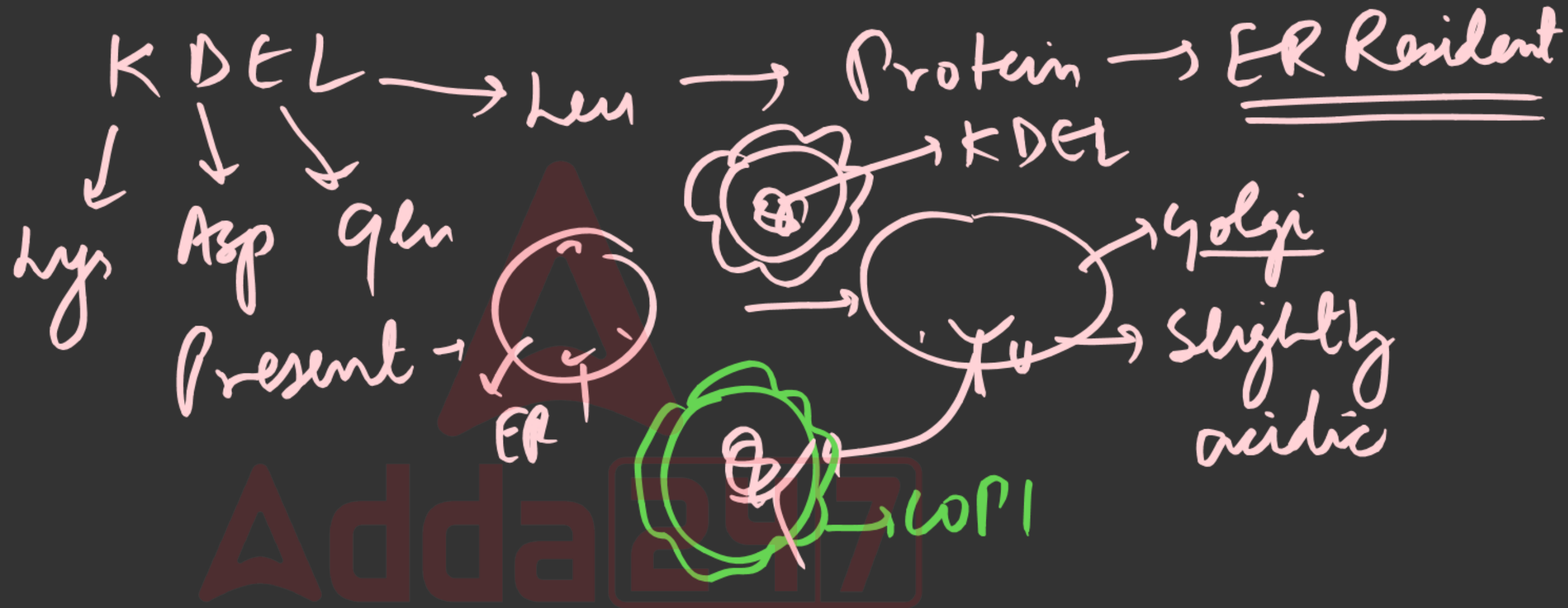
→ Bacteria Growth Curve

→ PM asymmetry



V-SNARE

tSNARE



Molecular Biology → DNA Polymerases
Eukaryotes

DNA Pol α ϵ β ← Match the following.

→ Histone modification

→ TBP → mutation.

→

Cell Signaling & Communication

↳ Cancer Metastasis

Riboswitching

or siRNA

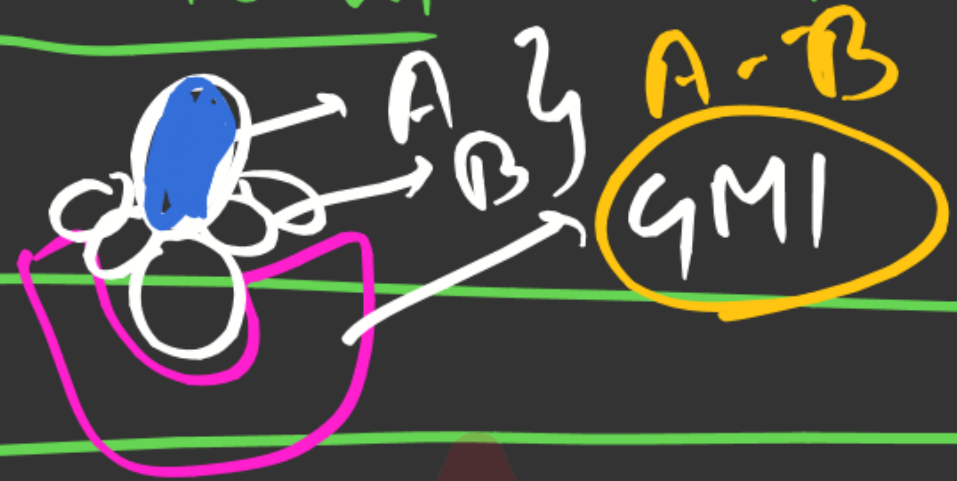
Cholera Toxin

Adda247

CT

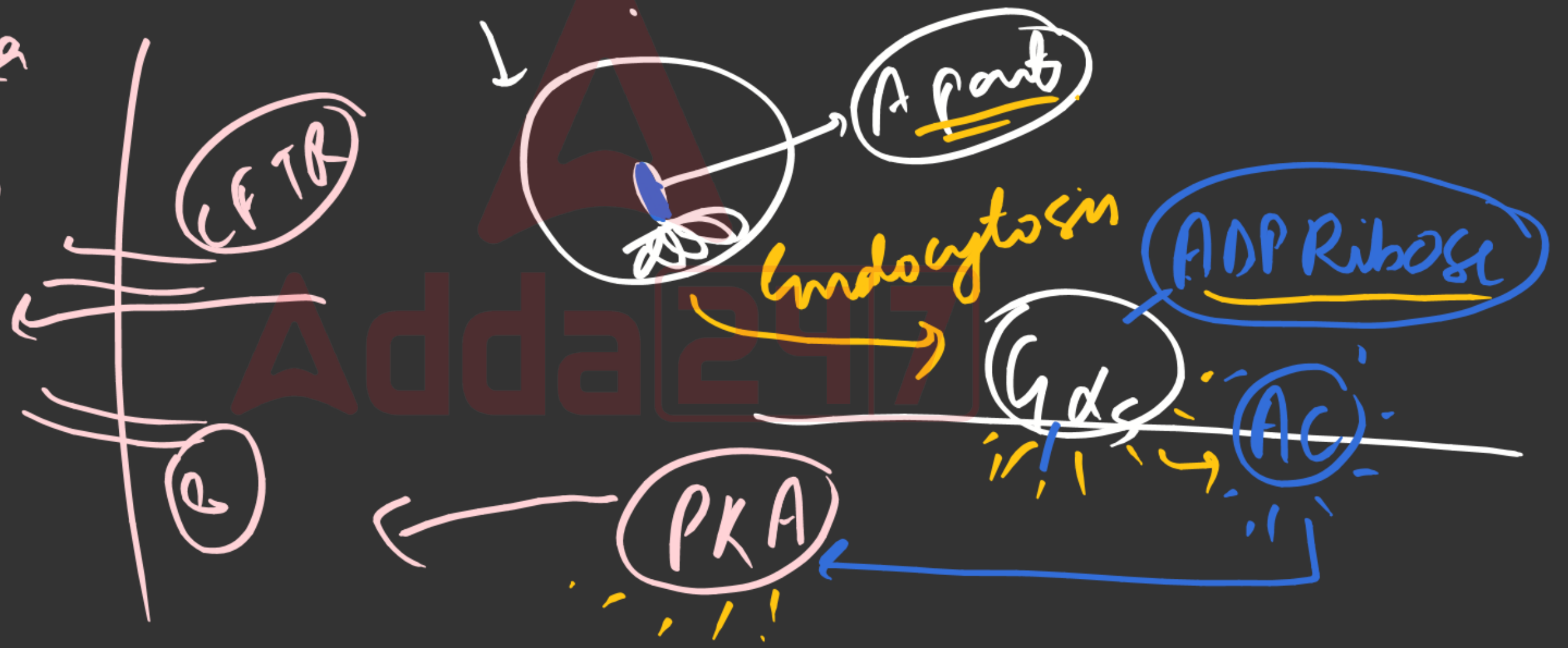
→ Cholera Toxin

→ Vibrio cholerae



diarrhoea

↑
 H_2O
 Cl^-
 Na^+



Sympatric speciation



CD 44 → tumor

CD 25 → T-cell activation

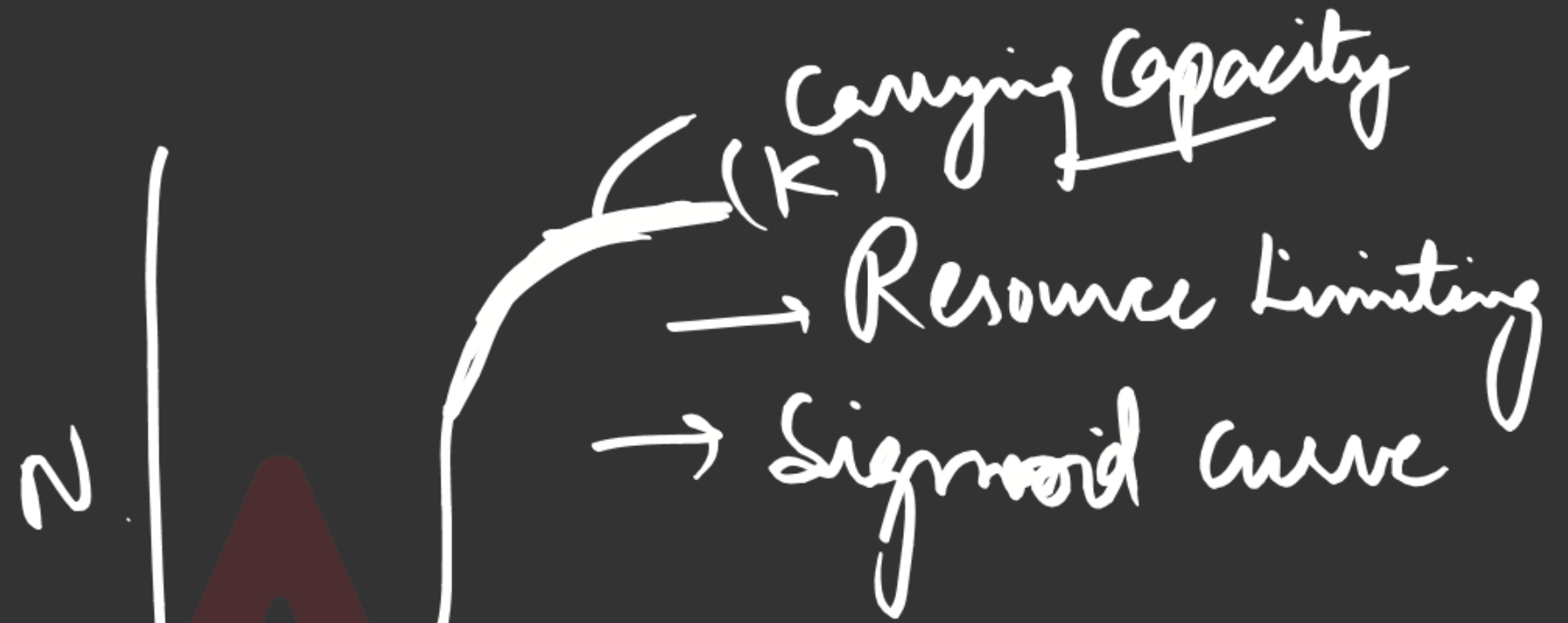
Adda247

Ecology → Mark Recapture Technique

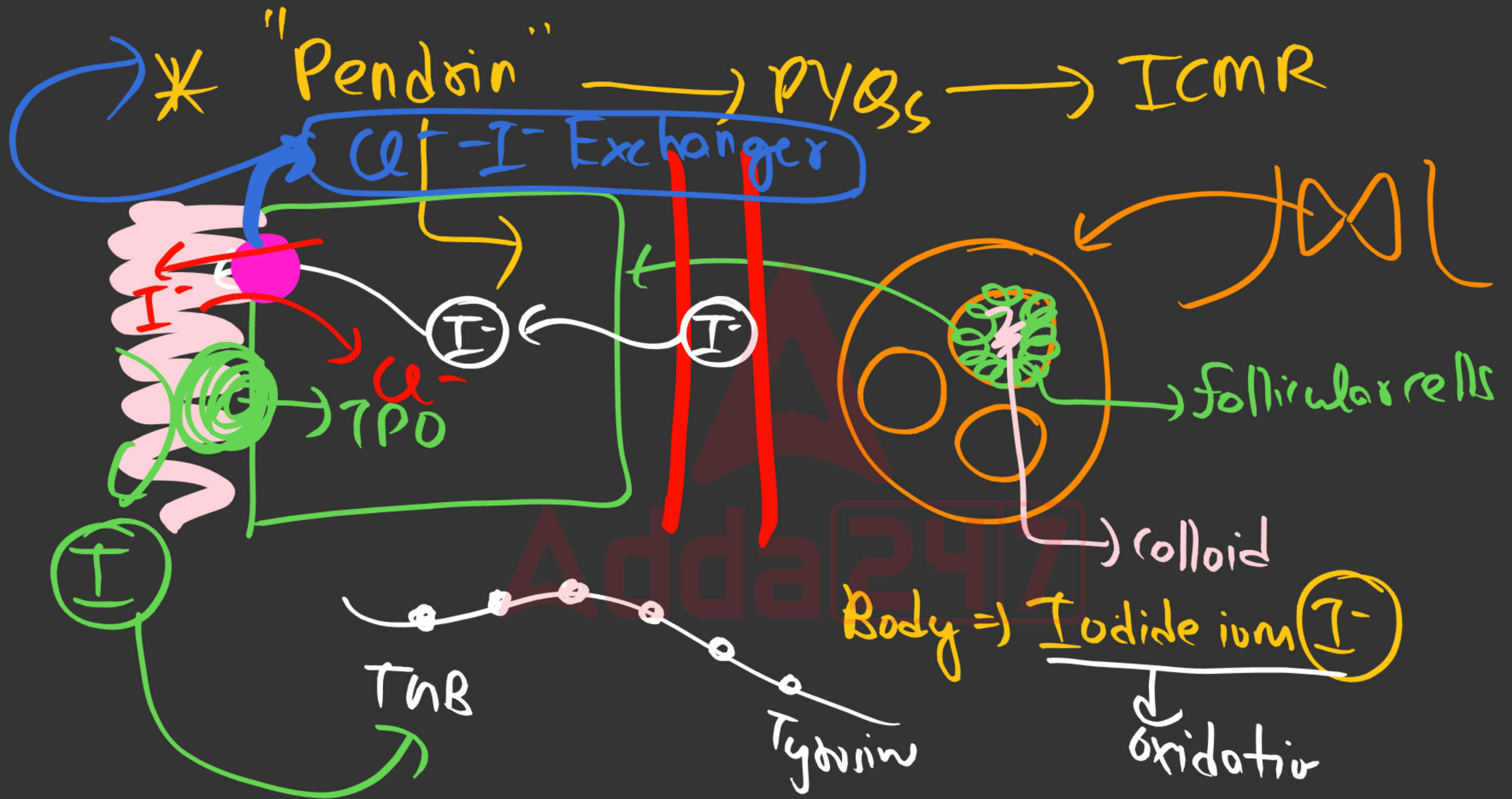
→ Meta population.

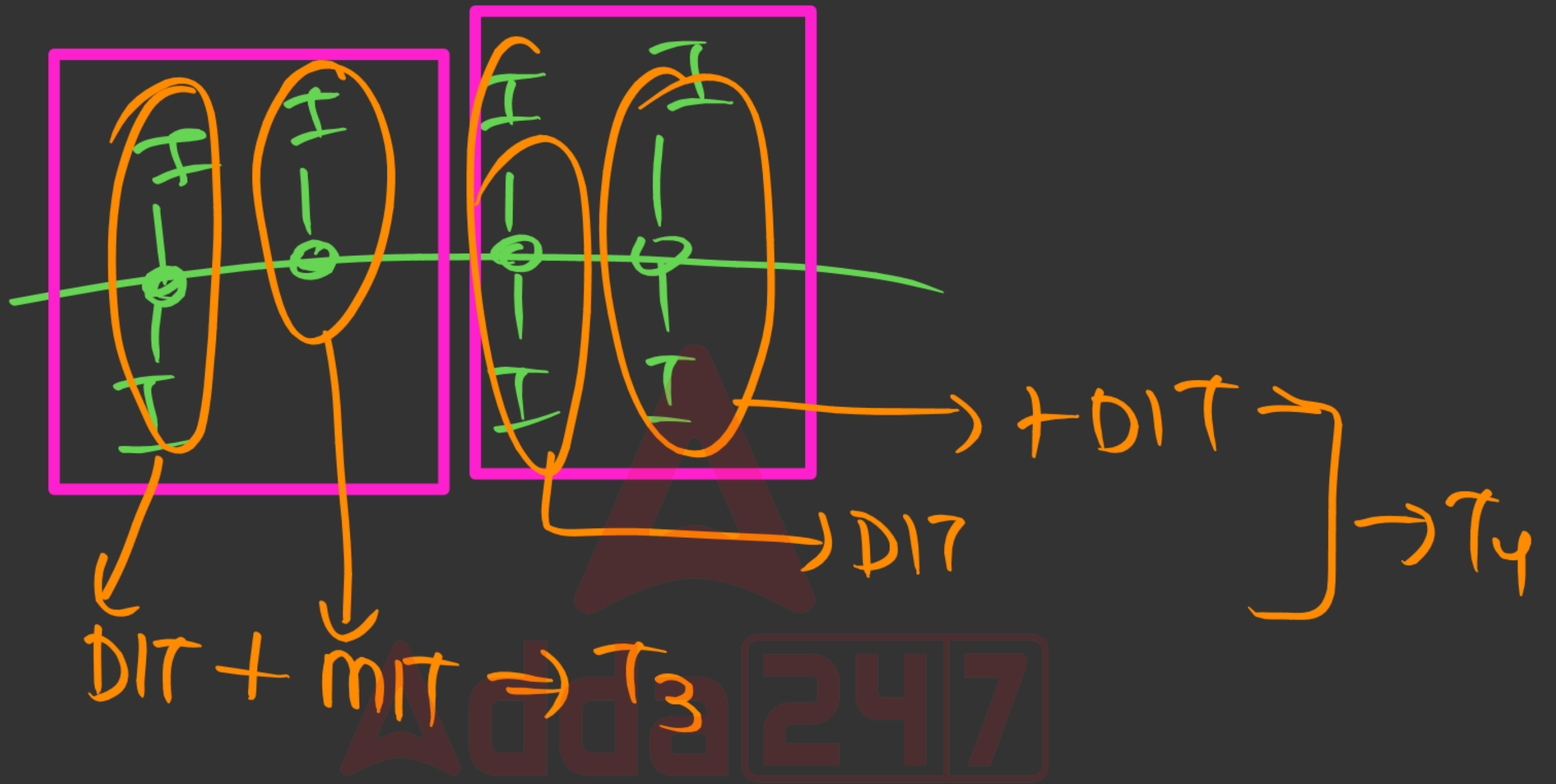
→ Random distribution

→ Logistic Growth Curve.



Adda247





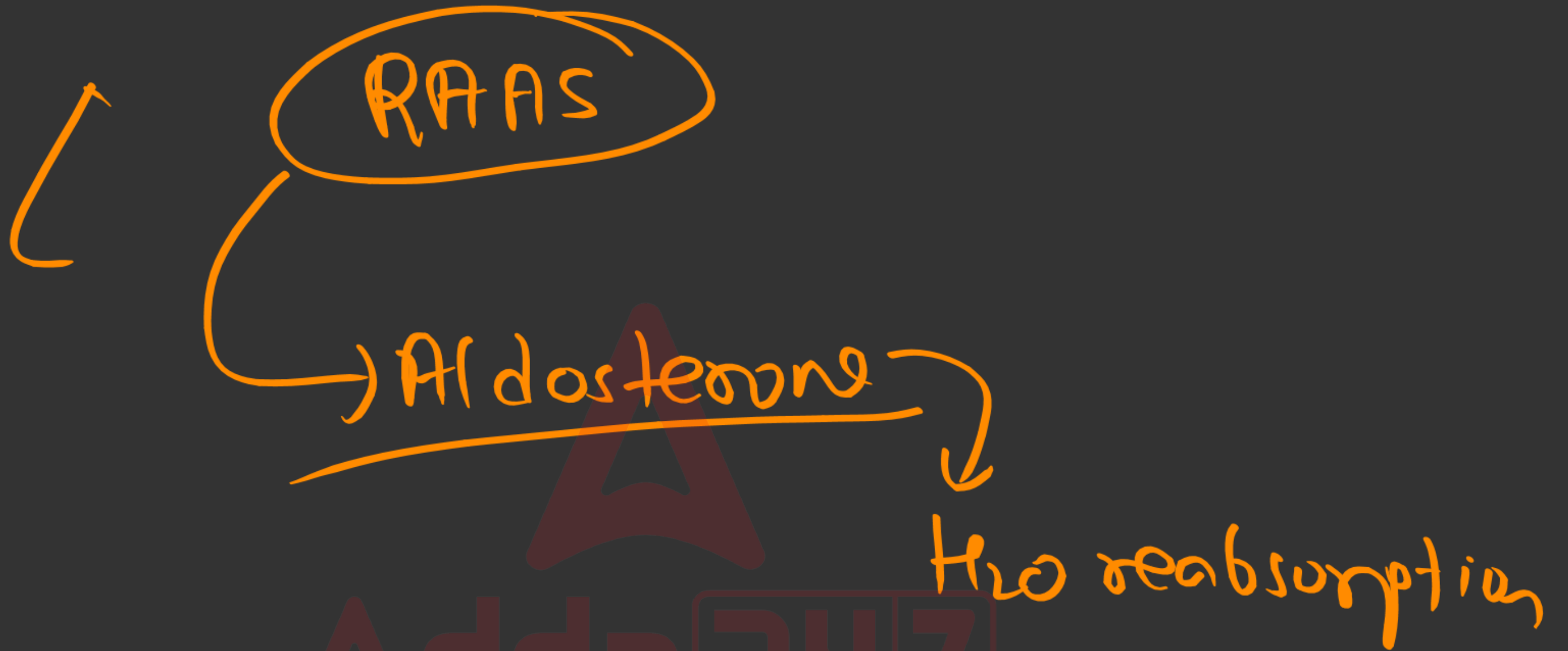
DIT + MIT => T3

247

+ DIT

DIT

T4



Adda247

Hox gene → Trick

Limbs ⇒ SUND2ARA

Stylopod

Hox 9

Hox 10

2 Endopod

Hox 11

Hox 12

Autopod

Hox 13



Cnuxken deficiency

Cnuxken \oplus \rightarrow Dorsalization

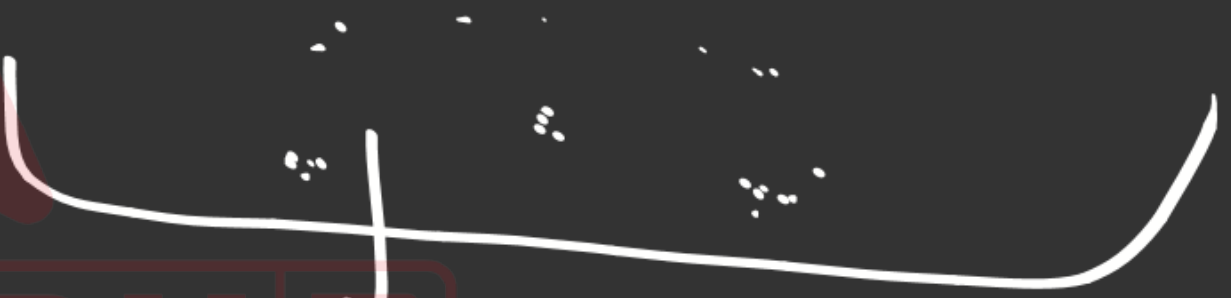
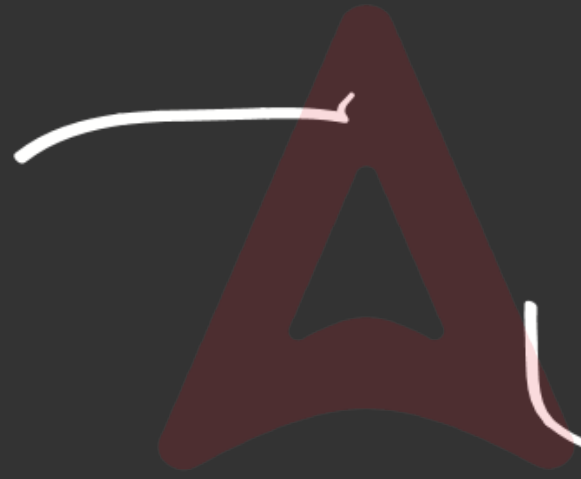
Cnuxken \ominus

\downarrow
Complete ventralization

Protein nucleus \rightarrow binding
Dorsal

Torpedo
+
Cnuxken





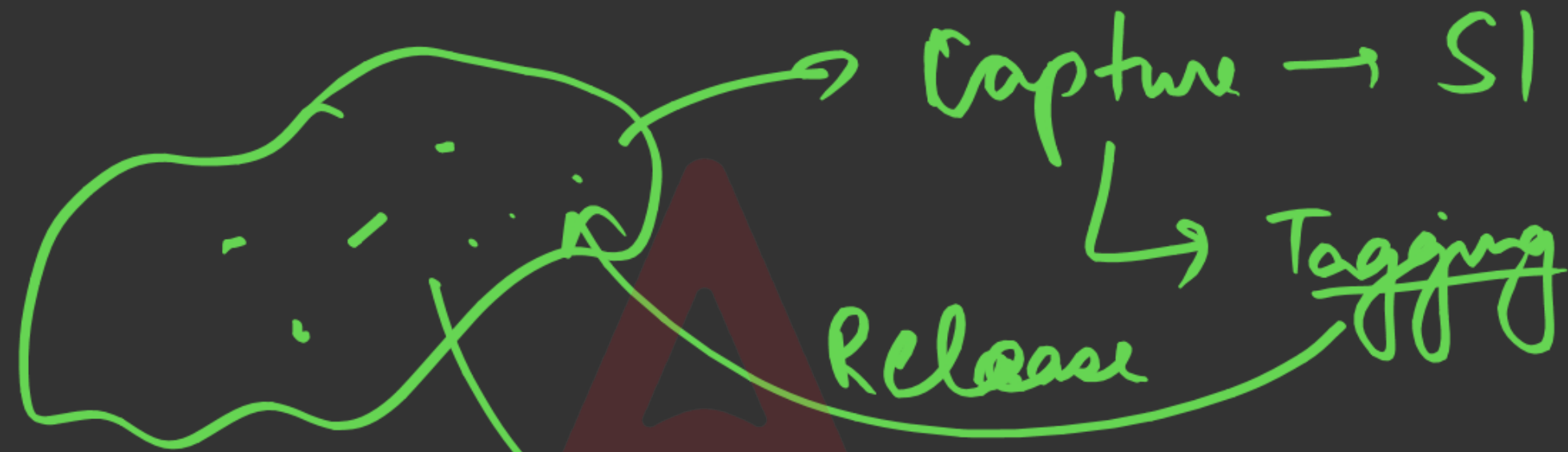
Adda247

Random distribution

Meta Population



Mark Recapture Technique \rightarrow Popⁿ estimation



$$N = \frac{S1 \times S2}{M}$$

Recapture (Marked + Unmarked)

$S2$

Evolution

⇒ Kin selection → wasp

⇒ Speciation → types

⇒ Hardy Weinberg

Represent

⇒ Homoplasy ⇒ wings of bats insects
birds

⇒ Thyroid Biosynthesis

⇒ Calcium related.

⇒ Respiration → Inspiration

⇒ Excretion → renal tubule

⇒ Blood → clotting factor (match)

⇒ incr. order of size of human org
arm head toe heart.

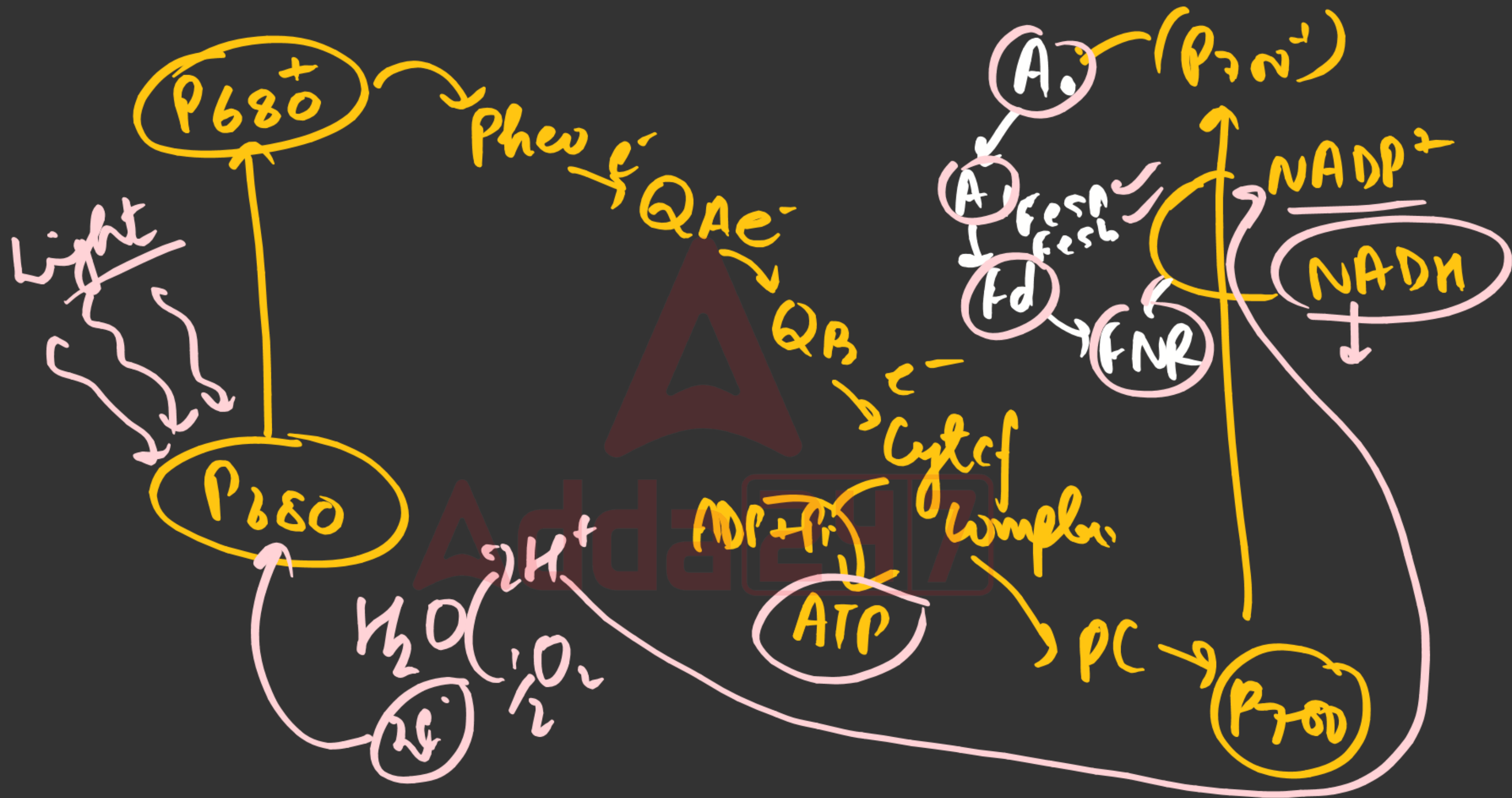
Plant Physiology → Photosynthesis

→ C₃ Cycle → Rubisco

→ C₄ Cycle

• Auxin Biosynthetic Pathway.

• Polar Transport → Auxin



Q Arrange in incr. order?

atom toe → heart → head
head
toe
heart
↓
atom

Adda247

A.K

Porifera

Coleenterates

Cnidarians

Poly

Medusa

Echinodermata

water vascular

5/8
Triploblastic

FoxO → IF

→ Insulin → Insulin Receptor



Adda247

CSIR-NET

4899/-

12 months

6 months

Jul 2025

₹ 4500/-

₹ 4500

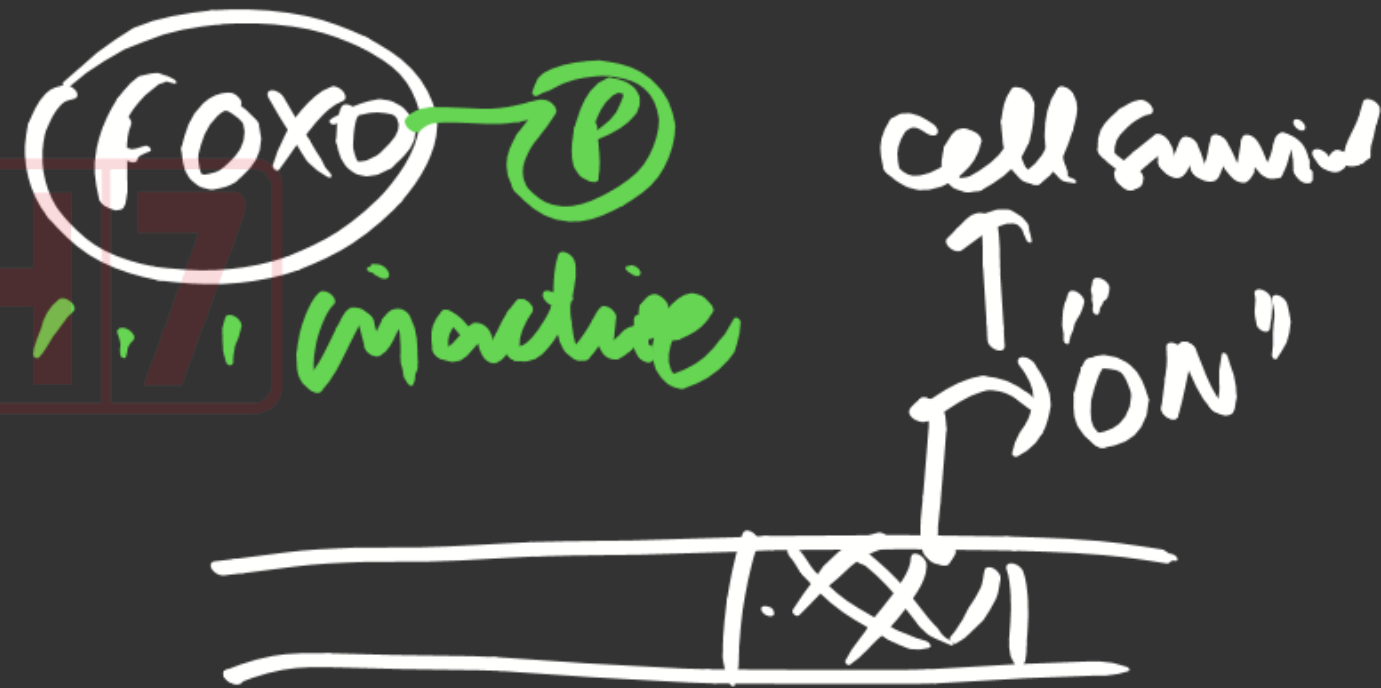
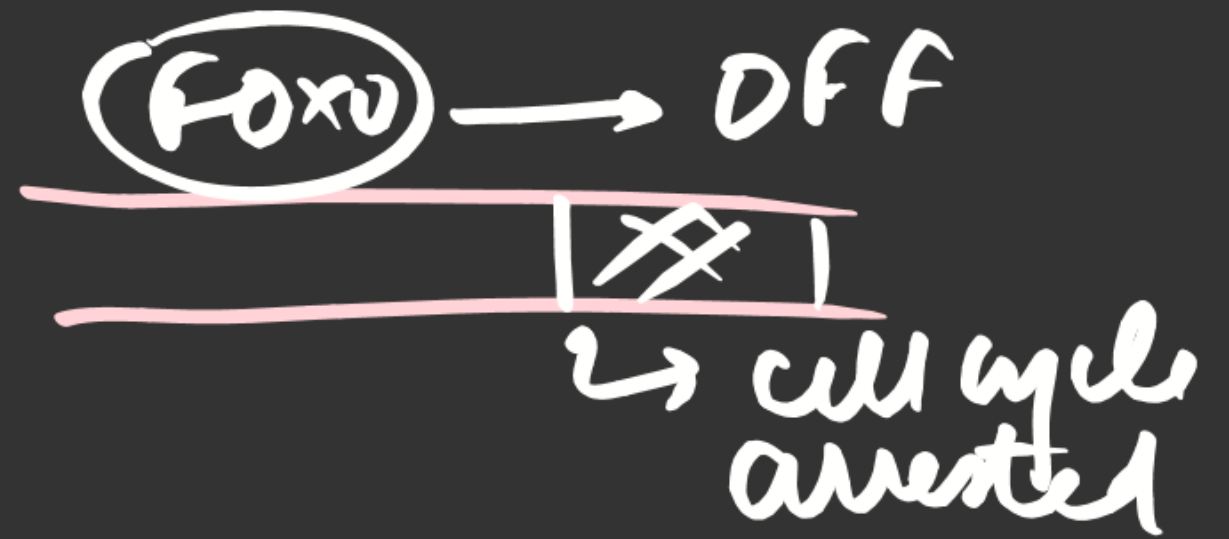
CSIR + ICMR +
DBT - JRF +
ICAR

Adda247

8080705775



→ For Batches can contact
on this no.



Adda247

Bisporic embryo sac



Adda247