

**FCI  
Assistant**

**Previous Year Paper**  
**Grade III Exam**  
**2012 Paper 2**



**SSC FCI EXAM**  
**ASSISTANT GRADE II EXAM**  
**PAPER-I**  
**GENERAL ENGLISH**

**Directions (1-5) :** In the following questions, some parts of the sentences have errors and some are correct. Find out which part of a sentence has an error. The number of that part is your answer. If a sentence is free from errors, then your answer is (4) i.e. No error.

1. You have been doing (1)/your homework (2)/regularly? (3)/ No error (4)
2. The same procedure (1)/ also should (2)/ for the final assessment (3) / No error (4)
3. I must find out (1)/ some means to balance (2)/ my budget (3) / No error (4)
4. Thank you, (1)/I am fine (2)/ completely. (3) / No error (4)
5. He asked me (1)/when could I finish (2)/ the work. (3) / No error (4)

**Directions (6-10) :** In the following questions, sentences are given with blanks to be filled in with an appropriate words. Four alternatives are suggested for each question. Choose the correct alternative out of the four as your answer.

6. He slipped \_\_\_\_\_ the train  
 (1) off (2) from  
 (3) of (4) through

7. How did these things come \_\_\_\_\_ ?  
 (1) about (2) into  
 (3) at (4) down
8. The cricket was lazy \_\_\_\_\_ the ant was busy  
 (1) yet (2) and  
 (3) but (4) so
9. Nadira \_\_\_\_\_ little difficulty in finding a job after her graduation  
 (1) feigned (2) faced  
 (3) managed (4) suffered
10. The children suddenly stopped \_\_\_\_\_ when they saw Grandpa coming in  
 (1) angue (2) argued  
 (3) arguing (4) to argue

**Directions (11-15) :** In the following questions out of the four alternative, choose the one which best expresses the meaning of the given word.

11. Regard  
 (1) respect (2) liking  
 (3) love (4) suspicion
12. Swap  
 (1) snap (2) exchange  
 (3) break (4) exclude
13. Prudent  
 (1) wise (2) cunning  
 (3) frank (4) severe
14. Gentus  
 (1) a generous person  
 (2) a foreigner  
 (3) a person with uncommon intellect  
 (4) an athlete

15. **Culmination**  
(1) conclusion  
(2) climax  
(3) abyss  
(4) cultivation

**Directions (16-20) :** In the following questions, choose the word opposite in meaning to the given word.

- 16.. **Evident**  
(1) suspected  
(2) disagreed  
(3) doubtful  
(4) unimportant

17. **Adamant**  
(1) yielding  
(2) permissive  
(3) liberal  
(4) tolerant

18. **Professional**  
(1) novice  
(2) amateur  
(3) dabbler  
(4) apprentice

19. **Callous**  
(1) persuasive  
(2) caring  
(3) gentle  
(4) sensitive

20. **Incredible**  
(1) credulous  
(2) probable  
(3) possible  
(4) creditable

**Directions (21-25) :** In the following questions, four alternatives are given for the idiom/phrase choose the alternative which best expresses the meaning of the idiom/phrase

21. **A little gush of gratitude**  
(1) gradual recovery  
(2) friendly feeling  
(3) excessive labour  
(4) excessive enthusiasm

22. **To lose ground**  
(1) to become less powerful  
(2) to become less popular  
(3) to lose foundation  
(4) to be without a leader

23. **To make both ends meet**  
(1) to buy costly articles  
(2) to live a luxurious life  
(3) to live within one's income  
(4) to please all people

24. **To fall back on**  
(1) to oppose something important  
(2) to suffer an injury on the back in an accident  
(3) to fall to do something important in time  
(4) to seek support out of necessity

25. **To make one's blood boil**  
(1) to make somebody furious  
(2) to develop fever  
(3) to get excited  
(4) to make someone nervous

**Directions (26-30) :** In the following questions, a part of the sentence is



printed in **bold**. Below are given alternatives to the **bold** part at (1) (2) and which may improve the sentence. Choose the correct alternative. In case no improvement is needed your answer is (4)

26. Officials were asked to examine the **likelihood** of providing banking facilities in the area  
(1) probability  
(2) possibility  
(3) profit  
(4) no improvement
27. The shortage of fuel has **obstacle** interstate transportation  
(1) facilitated  
(2) hampered  
(3) burdened  
(4) no improvement
28. **Being a rainy day**, we had to abandon the match  
(1) Having been a rainy day  
(2) It being a rainy day  
(3) It been a rainy day  
(4) No improvement
29. Rahul gave me an **old scissor**  
(1) An old scissors  
(2) A pair of old scissors  
(3) A pair of old scissor  
(4) No improvement
30. The teacher was angry with Paul as he had not **done the homework**  
(1) At  
(2) On  
(3) From  
(4) No improvement

**Directions (31-35) :** In the following questions, out of the four alternatives, choose the one which can be substituted for the given words/sentence

31. The process of deciding the nature of a disease by examination  
(1) Test  
(2) Perusal  
(3) Diagnosis  
(4) Operation.
32. That which cannot be easily read  
(1) Illegible  
(2) Incomprehensible  
(3) Unreadable  
(4) Unintelligible
33. One who finds nothing good in anything  
(1) Critic  
(2) Satirist  
(3) Cynic  
(4) Slanderer
34. A person who pretends to be what he is not  
(1) Explorer  
(2) Prompter  
(3) Imposter  
(4) Diviner
35. In a threatening manner  
(1) Ominously  
(2) Springtly  
(3) Ghastly  
(4) Terribly

**Directions (36-40) :** In the following questions, there are four different words out of which one is correctly spelt. Find the correctly spelt word

36. (1) correspondant  
(2) corraspondent  
(3) corraspondant  
(4) correspondent
37. (1) decett (2) decept  
(3) decept (4) deciept
38. (1) psuedonm (2) pseudonym  
(3) pseudonym (4) pseudonym
39. (1) jellousey (2) jealousy  
(3) jelousey (4) jealousey
40. (1) mischevious  
(2) mischievous  
(3) mischievous  
(4) mischiviuos
- (3) apprise (4) consist
44. (1) respected (2) addressed  
(3) prayed (4) typed
45. (1) publisher (2) salesman  
(3) editor (4) printer
46. (1) correspondence  
(2) writing  
(3) columns  
(4) articles
47. (1) objection (2) criticism  
(3) essay (4) language
48. (1) lucid (2) high  
(3) florid (4) descriptive
49. (1) critical (2) creative  
(3) subjective (4) objective
50. (1) divisjve (2) wicked  
(3) personal (4) unitidy

**Directions (41-50) :** In the following passage, some of the words have been left out. First read the passage over and try to understand what it is about. Then fill in the blanks with the help of the alternatives given.

Broadly speaking letters may be said to 41 into two classes, the formal and 42. Formal letters 43 of official or business matters and are 44 to an employer, officials of a department or institutions. Letters to the 45 of a newspaper also belong to this class. In fact, all 46 using formal pattern is of this category. The 47 has to be precisely stated. It must be 48 in style and quite 49. No 50 element has any place in it.

41. (1) fall (2) rise  
(3) escape (4) describe
42. (1) affectionate (2) personal  
(3) foreign (4) official
43. (1) deal (2) contain

## GENERAL INTELLIGENCE

**Directions (51-59) :** In each of the following questions, select the related word/letters/number from the given alternatives.

51. ABZ : BDX :: CFV : ?  
(1) HIT (2) DHI  
(3) DHO (4) DHT
52. BCDE : VWXY :: FGHI : ?  
(1) JKLM (2) KLIJ  
(3) NOPQ (4) RSTU
53. tide : edit :: spit : ?  
(1) tpis (2) tips  
(3) tsip (4) tpsi
54. 72 : 40 :: ? : 30  
(1) 64 (2) 54  
(3) 66 (4) 48
55. 6 : 12 :: 20 : ?



- (1) 50 (2) 30  
(3) 42 (4) 38
56. 5 : 135 :: 7 : ?  
(1) 353 (2) 245  
(3) 273 (4) 293
57. Poet : Imagination :: Historian : ?  
(1) Statistics  
(2) Commerce  
(3) Facts  
(4) Science
58. Gifted : Intelligent :: Creative : ?  
(1) Artistic  
(2) Scientific  
(3) Productive  
(4) Repetitive
59. Triangle : Hexagon :: ?  
(1) Cone : Sphere  
(2) Rectangle : Octagon  
(3) Pentagon : Heptagon  
(4) Angle : quadrilateral

**Directions (60-65) :** In each of the following questions, select the one which is different from the other responses.

60. (1) 275 (2) 324  
(3) 325 (4) 381
61. (1) 2016 (2) 3006  
(3) 3016 (4) 3303
62. (1) 31-64 (2) 26-48  
(3) 43-65 (4) 34-56
63. (1) NML (2) QPO  
(3) HGE (4) XWV
64. (1) ABBC (2) HIII  
(3) PQQR (4) WYYZ

65. (1) MDPS (2) CNGH  
(3) FJILQ (4) OAUE
66. (1) Watch (2) Clock  
(3) Bangle (4) Bracelet
67. (1) Brotherhood  
(2) Babyhood  
(3) Adulthood  
(4) Childhood
68. (1) Pen - Ink  
(2) Pot - Water  
(3) Bottle - Tonic  
(4) Cylinder - Air

**Directions (69-70) :** In each of the following questions, which one of the given responses would be a meaningful order of the following words in ascending order ?

69. 1. Mother 2. Infant  
3. Milk 4. Crying  
5. Smiling  
(1) 1, 5, 2, 4, 3  
(2) 2, 4, 1, 3, 5  
(3) 2, 5, 1, 3, 4  
(4) 3, 2, 1, 5, 4
70. 1. Salary 2. Child  
3. Employment 4. School  
5. College  
(1) 2, 4, 5, 3, 1  
(2) 3, 4, 1, 5, 2  
(3) 4, 2, 1, 3, 5  
(4) 5, 4, 1, 2, 3
71. Which one set of letters when sequentially placed at the gaps in the given letters series shall complete it ?  
\_\_ sr \_\_ tr \_\_ srs \_\_ r \_\_ srst \_\_

- (1) tissrr           (2) tsrtsr  
 (3) strtrs           (4) tsttir
72. Which of the following words will come fourth if arranged according to the English Dictionary
- (1) Elect           (2) Electric  
 (3) Elector       (4) Elastic

**Directions (73-76) :** In each of the following questions choose the correct alternative from the given ones that will complete the series.

73. 206, 221, 251, 296, 356, ?  
 (1) 416           (2) 426  
 (3) 431           (4) 430
74. 5, 17, 37, 65, ?, 145  
 (1) 95           (2) 97  
 (3) 99           (4) 101
75. KEC, LFD, MGE, NHF, ?  
 (1) OIF           (2) OIG  
 (3) PHG           (4) NIG
76. ABCD, GHJI, MNPO, ?  
 (1) RSQP       (2) STRQ  
 (3) RSUT       (4) STVU
77. Kusuma is the wife of Ravi. Govind and Prabhu are brothers. Govind is the brother of Ravi. Prabhu is Kusuma's  
 (1) Cousin  
 (2) Brother  
 (3) Brother-in-law  
 (4) Uncle
78. 20 years ago, Antony's age was  $\frac{1}{2}$  of what his age now is. What is his age now ?  
 (1) 20 years  
 (2) 40 years

- (3) 35 years  
 (4) 30 years
79. Find the wrong number in the given number series  
 3, 9, 27, 81, 243, 730.  
 (1) 27           (2) 81  
 (3) 243         (4) 730
80. If in a certain code language INSTITUTION is coded as NOITUTITSNI, then how will PERFECTION be coded in that code language ?  
 (1) NOITEERPFC  
 (2) NOITCEFREP  
 (3) NOITCFERPE  
 (4) NOTICEFRPE
81. If L denotes  $\times$ , M denotes  $\div$ , P denotes + and Q denotes  $-$ , then find the value of  
 $16 P 25 M 8 Q 6 M 2 L 3 = ?$   
 (1) 6           (2) 8  
 (3) 10         (4) 12
82. Some equation are solved on the basis of a certain system. Find out the correct answer for the unsolved equation on that basis  
 If  $8 + 8 = 72$ ,  $5 + 5 = 30$  and  $7 + 7 = 56$ , what is  $6 + 6 = ?$   
 (1) 40           (2) 42  
 (3) 30           (4) 36
83. Select the correct combination of mathematical signs to replace \* signs and to balance the given equation  
 (1)  $\times, <, \div$        (2)  $\times, >, \div$   
 (3)  $\div, >, \times$        (4)  $\times, > +$
84. From the following alternatives, select the word which cannot be



formed using the letters of the given word

CORRESPONDENT

- (1) SPEED (2) ORDER  
(3) SPOON (4) ARREST

85. From the following alternatives, select the word which can be formed using the letters of the given word

CONTROVERSY

- (1) RIVER (2) STORY  
(3) OTHER (4) YOURS

86. If B = 2, A = 1, M = 3, R = 5, E = 6, O = 7, the sum of the letters of which of the following words will give the highest number?

- (1) BORE (2) ROOM  
(3) MORE (4) RARE

Directions (87-88) : In each of the following questions, find the missing number from the given responses.

87. 

4	8	10	320
2	?	3	180
9	6	4	216

- (1) 22  
(2) 30  
(3) 28  
(4) 20

88. 

18	11	19
12	13	16
36	4	?

- (1) 36  
(2) 9  
(3) 35  
(4) 7

89. Lalit is elder than Prakash and Kishore, Mukesh is elder than

Rakesh but not as old as Lalit. Prakash is younger than Rakesh but is not the youngest. Who is the eldest?

- (1) Lalit  
(2) Mukesh  
(3) Rakesh  
(4) Kishore

90. John's house is 100 metre north of his uncle office. His uncle's house is located 200 metres west of his (uncle's) office. Kabir is the friend of John and he stays 100 metres east of John's house. The office of Kabir is located 100 metres south of his house. Then how far is his uncle's house from Kabir's office?

- (1) West (2) East  
(3) South (4) North

92. A house faces north. A man coming out of his house walked turned left and walked 25 metres. He then turned right and walked 5 metres and again turned right and walked 25 metres. How far is he from his house?

- (1) 15 metres  
(2) 55 metres  
(3) 60 metres  
(4) 65 metres

Directions (93-94) : In each of the following question, one or two statements are given followed by two conclusions I and II. You have to consider the statements to be true even if they seem to be at variance from



commonly known facts. You are to decide which of the given conclusions definitely follows from the given statements.

93. **Statements**

A room with flowers looks beautiful

**Conclusions**

- I. Flowers are grown for decoration of rooms
  - II. Room without flowers looks ugly
- (1) Only conclusion I follows
  - (2) Only conclusion II follows
  - (3) Both conclusions I and II follow
  - (4) Neither conclusion I nor conclusion II follows

94. **Statements**

All students are boys

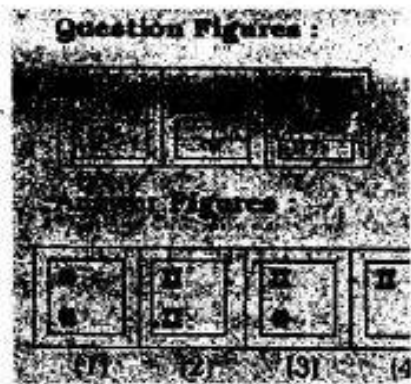
No boy is dull

**Conclusions**

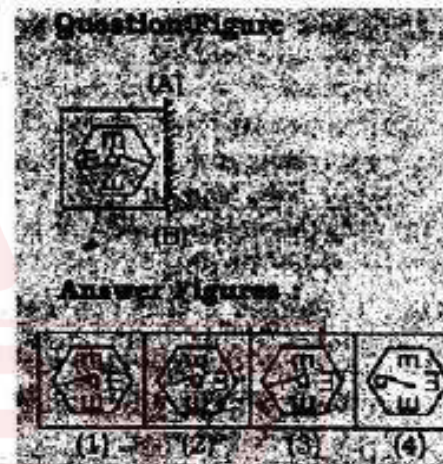
- I. There are no girls in the class
  - II. No student is dull
- (1) Only conclusion I follows
  - (2) Only conclusion II follows
  - (3) Both conclusion I and II follow
  - (4) Neither conclusion I nor conclusion II follows

95. A piece of paper is folded and cut as shown below in the question figures. From the given answer figures, indicate how it

will appear when opened



96. Which of the answer figures exactly the mirror image of the given figure, when the mirror is held on the line AB?

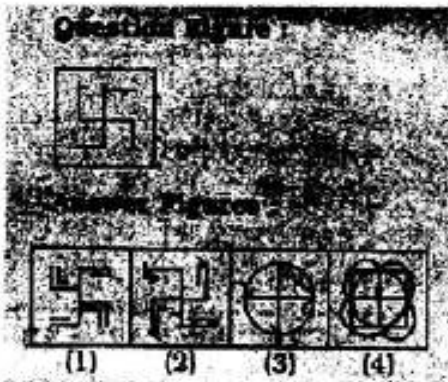


97. Which answer figure completes the pattern in the question figure?





98. Select the answer figure in which the question figure is hidden/embedded



99. Which one of the following diagrams best depicts the relationship among Tiger, Lions and Animals ?



100. A word is represented by only one set of numbers as given in any one of the alternative. The sets of numbers given in the alternatives are represented by two classes of alphabets as shown in two matrices given below. The columns and rows of Matrix I are numbered from 0 to 4 and that of Matrix II are numbered from 5 to 9. A letter from these matrices can be

represented first by its row and next by its column, e.g. 'H' can be represented by 14, 20, 42, etc. and 'D' can be represented by 59, 65, 86, etc. Identify the set for the word NAIL.

#### MATRIX-I

	0	1	2	3	4
0	R	H	E	L	I
1	I	E	L	R	H
2	H	L	R	I	E
3	E	R	I	H	L
4	L	I	H	E	R

#### MATRIX-II

	5	6	7	8	9
5	B	S	N	A	D
6	D	N	B	S	A
7	A	N	D	N	S
8	S	D	A	B	N
9	N	A	S	D	B

- (1) 57, 87, 01, 43  
 (2) 59, 58, 10, 12  
 (3) 89, 57, 04, 41  
 (4) 95, 87, 32, 21

#### GENERAL AWARENESS

101. The preamble to our constitution makes no mention of
- (1) Justice
  - (2) Fraternity
  - (3) Equality of status
  - (4) Adult franchise
102. Which one of the following is the popularity elected house of the Indian Parliament ?
- (1) Rajya Sabha
  - (2) Lok Sabha



- (3) Lok Sabha as well as Rajya Sabha  
(4) None of the above
103. Which part of the constitution deals with the Directive Principles of State Policy ?  
(1) Part-III  
(2) Part-IV  
(3) Part-I  
(4) Part-II
104. Gandhiji was influenced by the writing of  
(1) Karl Marx  
(2) Thomas Hobbes  
(3) Charles Darwin  
(4) Leo Tolstoy
105. The methods of democratic socialism are  
(1) Revolution  
(2) General strike  
(3) Sabotage  
(4) Persuasion and propaganda
106. The number of oil refineries working in the State of Assam is  
(1) One  
(2) Two  
(3) Three  
(4) Four
107. Per capita income is equal to  $\frac{\text{National income}}{\text{Total population of the country}}$   
(1)  $\frac{\text{National income}}{\text{Total population of the country}}$   
(2)  $\text{National income} + \text{Population}$   
(3)  $\text{National income} - \text{population}$   
(4)  $\text{National income} \times \text{population}$
108. Who appoints the Finance Commission ?  
(1) Finance Minister  
(2) Prime Minister  
(3) Speaker of the Lok Sabha  
(4) President
109. The Annapurna Scheme was implemented in the year  
(1) 1998  
(2) 1996  
(3) 1999  
(4) 2000
110. A favourable balance of trade of a country implies that  
(1) Imports are greater than exports  
(2) Exports are greater than imports  
(3) Both imports and exports are equal  
(4) Rising imports and falling exports
111. Major iron and steel industries are located in the plateau region of  
(1) Deccan  
(2) Malwa  
(3) Telangana  
(4) Chota Nagpur
112. The tallest and thickest type of grass is  
(1) Alfalfa  
(2) Fodder  
(3) Bamboo  
(4) Lichens
113. Which of the following rivers has its source outside India?  
(1) Brahmaputra  
(2) Beas  
(3) Ravi

- (4) Jhelum
114. Majuli, the largest river land in the world, lies in the state of
- (1) Arunachal Pradesh
  - (2) Assam
  - (3) Tripura
  - (4) Mizoram
115. Desertification can be checked by
- (1) Plugging gullies
  - (2) Checking over grazing
  - (3) Contour ploughing
  - (4) Forming shelter belts
116. Worship of Mother Goddess was associated with
- (1) Aryan Civilization
  - (2) Mediterranean Civilization
  - (3) Indus Valley Civilization
  - (4) Later Vedic Civilization
117. Alexander and Porus fought a battle at
- (1) Hydaspes
  - (2) Jhelum
  - (3) Panipat
  - (4) Tarain
118. The Battle of Haldighati was fought between
- (1) Akbar and Rana Sangram Singh
  - (2) Akbar and Medini Rai
  - (3) Akbar and Rana Pratap Singh
  - (4) Akbar and Uday Singh
119. The famous Peacock Throne of Shah Jahan was taken away in 1739 by
- (1) Afghan Invader Ahmed Shah Abdali
  - (2) Persian Invader Nadir Shah
  - (3) Mongol Invader Chengiz Khan
  - (4) British East India Company
120. Identify the Buddhist Literature from the following :
- (1) Tripitakas
  - (2) Upanishads
  - (3) Angas
  - (4) Aranyakas
121. The process of preventing the birds from flying is called
- (1) Brailing
  - (2) Debeaking
  - (3) Dubbing
  - (4) Pecking
122. The Vikram Sarabhi Space Centre is located at
- (1) Sriharikota
  - (2) Trivandrum
  - (3) Trombay
  - (4) Bangalore
123. The time period of a seconds pendulum is
- (1) 1 second
  - (2) 2 seconds
  - (3) 0.5 second
  - (4) 1.5 seconds
124. Lakes freeze in cold countries in winter, leaving the water underneath at
- (1)  $0^{\circ}\text{C}$
  - (2)  $0^{\circ}\text{F}$
  - (3)  $4^{\circ}\text{C}$
  - (4)  $4^{\circ}\text{F}$
125. Which one of the following determines the sharpness of



image in a camera ?

- (1) The aperture
  - (2) The exposure time
  - (3) The focal length of the lens
  - (4) Size of the camera
126. Stainless steel is an alloy of
- (1) Chromium and carbon
  - (2) Chromium, carbon and iron
  - (3) Chromium and iron
  - (4) Carbon and iron
127. Veins seen in the leaves, serve the function of
- (1) Photosynthesis
  - (2) Transpiration
  - (3) Storage
  - (4) Conduction
128. The edible part of cabbage is
- (1) Fruit
  - (2) Condensed flower
  - (3) Vegetative bud
  - (4) Inflorescence
129. Which of the following processes are associated with plants during dark period ?
- (1) Photosynthesis and respiration
  - (2) Respiration and transpiration
  - (3) Transpiration and conduction
  - (4) Conduction and respiration
130. In MRI machine, which one of the following is used ?
- (1) Sound wave
  - (2) 'X'-ray
  - (3) Ultra-sound wave
  - (4) Magnetic wave
131. For a person having hypermetropia, the near point is
- (1) Greater than 25 cm
  - (2) Greater than 50 cm
  - (3) Less than 25 cm
  - (4) Infinity
132. Amount of water vapour in the atmosphere is measured in terms of
- (1) Humidity
  - (2) Droplets
  - (3) Smog
  - (4) All of the above
133. For generation of biogas, the materials commonly used are
- (1) Animal wastes
  - (2) Crop residues
  - (3) Aquatic plants
  - (4) Forest residues
134. The symbols used in an assembly language are
- (1) Codes
  - (2) Mnemonics
  - (3) Assembler
  - (4) Machine codes
135. The '.NOSHAD' attributed in HTML
- (1) Defines the thickness of the line
  - (2) Displays the lines in red
  - (3) Displays the line in dark grey
  - (4) Displays the example in red
136. Who invented vaccination ?
- (1) James Simpson
  - (2) Edward Jenner
  - (3) Alexander Fleming
  - (4) Christian Barnard

137. Raw materials used for the manufacture of glass are
- (1) Sand, soda, limestone
  - (2) Sand, charcoal, soda
  - (3) Limestone, charcoal, sulphur
  - (4) Sand, sulphur, soda
138. Goiter is caused by the deficiency of
- (1) Iodine
  - (2) Chlorine
  - (3) Sodium
  - (4) Calcium
139. Which of the following is used in welding broken pieces of iron rails and machine parts ?
- (1) Aluminum sulphate
  - (2) Solder
  - (3) Aluminum powder
  - (4) None of the above
140. The total number of biosphere reserves present in India are
- (1) Eleven
  - (2) Ten
  - (3) Fifteen
  - (4) Twelve
141. The BOD values of water indicate the
- (1) Amount of organic debris
  - (2) Amount of oxygen used for biochemical oxidation
  - (3) Amount of oxygen used for biochemical reduction
  - (4) Amount of ozone used for biochemical oxidation
142. According to the census data released in July 2011, the fall in child sex ratio in rural areas as compared to urban areas is
- (1) Five times
  - (2) Four times
  - (3) Three times
  - (4) Two times
143. The objective of 'Jawahar Rojgar Yojna' is to
- (1) Provide employment to youth in rural areas
  - (2) Create employment opportunities for unemployed persons
  - (3) Strengthen the rural economic and social structure
  - (4) All of the above
144. Tummalapalle, where huge reserves of uranium have been found as announced by the Atomic Energy Commission in July, 2011, lies in the state of
- (1) Jharkhand
  - (2) Andhra Pradesh
  - (3) Tamil Nadu
  - (4) Gujarat
145. Surat is situated on the banks of the river
- (1) Tapi
  - (2) Mahanadi
  - (3) Bhima
  - (4) Godavari
146. The most densely populated State in India is
- (1) Uttar Pradesh
  - (2) Bihar
  - (3) West Bengal
  - (4) Haryana
147. The formula 1 Indian Grand



- Prix was held on October 30, 2011 at
- (1) Delhi proper  
(2) Greater Noida  
(3) Gurgaon  
(4) Hyderabad
148. Out of which of the following States is Nautanki, a folk dance?
- (1) Haryana  
(2) Uttar Pradesh  
(3) Rajasthan  
(4) Gujarat
149. Guru Gopinath was an exponent of
- (1) Kathak  
(2) Kathakali  
(3) Kuchipudi  
(4) Bharatnatyam
150. The Noble Prize for Physics for the year 2011 has been awarded to
- (1) Saul Perimutter, Brian P. Schmidt and Adam G. Riess  
(2) Bruce A. Beutler, Jules A. Hoffmann and Ralph M. Steinman  
(3) Christopher A. Sims and Thomas J. Sargent  
(4) Dan Schechtman
29. (2) 30. (4) 31. (3) 32. (1)  
33. (1) 34. (3) 35. (3) 36. (4)  
37. (1) 38. (2) 39. (2) 40. (3)  
41. (1) 42. (2) 43. (3) 44. (2)  
45. (3) 46. (1) 47. (3) 48. (1)  
49. (4) 50. (4) 51. (4) 52. (4)  
53. (2) 54. (3) 55. (2) 56. (1)  
57. (3) 58. (3) 59. (2) 60. (2)  
61. (4) 62. (1) 63. (3) 64. (4)  
65. (4) 66. (2) 67. (1) 68. (1)  
69. (2) 70. (1) 71. (4) 72. (2)  
73. (3) 74. (4) 75. (3) 76. (4)  
77. (3) 78. (2) 79. (4) 80. (2)  
81. (3) 82. (2) 83. (2) 84. (4)  
85. (2) 86. (2) 87. (2) 88. (2)  
89. (1) 90. (2) 91. (1) 92. (1)  
93. (4) 94. (2) 95. (1) 96. (3)  
97. (3) 98. (4) 99. (3) 100. (4)  
101. (4) 102. (2) 103. (2) 104. (4)  
105. (4) 106. (4) 107. (1) 108. (4)  
109. (4) 110. (2) 111. (4) 112. (3)  
113. (1) 114. (2) 115. (2) 116. (3)  
117. (1) 118. (3) 119. (2) 120. (1)  
121. (1) 122. (2) 123. (2) 124. (3)  
125. (1) 126. (2) 127. (2) 128. (3)  
129. (4) 130. (4) 131. (4) 132. (1)  
133. (1) 134. (2) 135. (3) 136. (2)  
137. (4) 138. (1) 139. (3) 140. (3)  
141. (2) 142. (2) 143. (4) 144. (2)  
145. (1) 146. (2) 147. (2) 148. (2)  
149. (2) 150. (1)

### ANSWERS

1. (1) 2. (2) 3. (2) 4. (3)  
5. (2) 6. (2) 7. (1) 8. (3)  
9. (2) 10. (3) 11. (1) 12. (2)  
13. (1) 14. (3) 15. (2) 16. (3)  
17. (1) 18. (2) 19. (4) 20. (3)  
21. (2) 22. (1) 23. (3) 24. (4)  
25. (1) 26. (3) 27. (2) 28. (2)