

100 Questions

Que. 1 'Ghoomar' is a folk-dance form from the state of _____.

1. Jharkhand
2. Bihar
3. Tripura
4. Rajasthan

Correct Option - 4

Que. 2 Sonal Mansingh is associated with _____ classic dance form.

1. Bharatanatyam
2. Manipuri
3. Kuchipudi
4. Kathak

Correct Option - 1

Que. 3 The Ancient Nalanda University was founded by _____.

1. Kumaragupta I
2. Skandagupta
3. Kumaragupta II
4. Narasimhagupta

Correct Option - 1

Que. 4 Which one of the following is not the function of NABARD ?

1. To provide refinance assistance by way of short term credit to state cooperative banks and sectoral rural banks, etc., approved by the RBI for some specific purposes.
2. To undertake inspection of cooperative societies other than primary cooperative societies and RRBs.
3. To promote research in various aspects of the problems of urban development.
4. To subscribe to share capital or invest in securities of any institution concerned with agricultural and rural development.

Correct Option - 3

Que. 5 Which of the following rivers originates from Aravalli range and disappears into Rann of Kachchh?

1. Chambal
2. Luni
3. Sabarmati

Test Prime

ALL EXAMS,
ONE SUBSCRIPTION



70,000+
Mock Tests



Personalised
Report Card



Unlimited
Re-Attempt



600+
Exam Covered



Previous Year
Papers



500%
Refund



ATTEMPT FREE MOCK NOW

Test Prime

ALL EXAMS,
ONE SUBSCRIPTION



70,000+
Mock Tests



Personalised
Report Card



Unlimited
Re-Attempt



600+
Exam Covered



Previous Year
Papers



500%
Refund



ATTEMPT FREE MOCK NOW

4. Banas

Correct Option - 2

Que. 6 Who was responsible for the integration of princely states into the Indian Union after Independence?

1. Sri Rajagopalachari
2. Pt. Jawaharlal Nehru
3. Sardar Vallabh Bhai Patel
4. Maulana Abul Kalam Azad

Correct Option - 3

Que. 7 What is the full form of UPI?

1. Unified Processing Invention
2. Ultra Payment Interface
3. Use Payments Instantly
4. Unified Payments Interface

Correct Option - 4

Que. 8 Who has been appointed as the Vice Chief of the Army Staff on 1 March 2023?

1. Girish Kalia
2. A.P. Singh
3. MV Suchindra Kumar
4. Pankaj Mohan

Correct Option - 3

Que. 9 Who is the 24th Chief Election Commissioner of India?

1. Sunil Arora
2. Nasim Zaidi
3. Sushil Chandra
4. Om Prakash Rawat

Correct Option - 3

Que. 10 Which colour saree embellished with bright golden borders is worn by the dancers of Mohiniyattam?

1. White/off-white
2. Parrot green /green
3. Deep red /red
4. Sea blue /blue

Correct Option - 1

Que. 11 Whose Birth Anniversary shall be celebrated as Parakram Diwas on 23rd January each year?

1. Jawaharlal Nehru
2. Lal Bahadur Shastri
3. Bhagat Singh
4. Netaji Subhas Chandra Bose

Correct Option - 4

Que. 12 Which of the following statements is INCORRECT?

1. Arabic was the language of administration under the Delhi Sultans.
2. Coins minted in Delhi were called 'Dehliwal'.
3. Qutb al-Din Aibak ruled over Delhi from 1206 - 1210.
4. Delhi first became the capital of a kingdom under the Tomara Rajputs.

Correct Option - 1

Que. 13 Which of the following rivers originates from the 'Rakas Lake'?

1. Beas
2. Jhelum
3. Chenab
4. Sutlej

Correct Option - 4

Que. 14 The Blue Revolution in India is related to _____

1. jute production
2. indigo production
3. agriculture
4. fish production

Correct Option - 4

Que. 15 Tilottama Sen is related to which of the following sports?

1. Weightlifting
2. Shooting
3. Swimming
4. Archery

Correct Option - 2

Que. 16 Which of the following dynasties was associated with Aihole Inscription?

1. Parmar Dynasty
2. Chalukya Dynasty
3. Chola Dynasty
4. Rashtrakuta Dynasty

Correct Option - 2

Que. 17 Which of the following rulers did **NOT** belong to the Mauryan Dynasty?

1. Ashoka
2. Bindusara
3. Bimbisara
4. Chandragupta

Correct Option - 3

Que. 18 Which Mughal emperor is known by the name of 'Rangila'?

1. Farrukhsiyar
2. Rafi-Ud-darazat
3. Muhammad Shah
4. Rafi-Ud-daula

Correct Option - 3

Que. 19 Which state in India has the longest coastline?

1. Kerala
2. Tamil Nadu
3. Maharashtra
4. Gujarat

Correct Option - 4

Que. 20 Which of the following is the highest mountain peak in the African continent?

1. Mount Hanang
2. Mount Kenya
3. Mount Kilimanjaro
4. Mount Algan

Correct Option - 3

Que. 21 During complete combustion, the color of the flame produced in the gas stove burner is

1. Yellow
2. Black
3. Blue
4. Green

Correct Option - 3

Que. 22 Light year is a unit for measurement of

1. Age of universe
2. Very small time intervals
3. Very high temperature
4. Very large distance

Correct Option - 4

Que. 23 The plant which traps and feeds on insects is:

1. Cuscuta
2. China rose
3. Pitcher plant
4. Rose

Correct Option - 3

Que. 24 A common drug in a first aid box is Ibuprofen. When should Ibuprofen be taken?

1. To ease indigestion and heartburn
2. To aid in clotting of blood
3. To bring relief from asthma
4. To treat pain, fever and inflammation

Correct Option - 4

Que. 25 Which of the following statement is true?

1. Rusting of iron is an example of a physical change.
2. The burning of a substance is an example of a physical change.
3. The stretching of a rubber band is an example of a chemical change.
4. Digestion in humans is an example of a chemical change.

Correct Option - 4

Que. 26 The causative agent of the deadly disease Ebola is/are:

1. parasites

2. virus
3. bacteria
4. fungus

Correct Option - 2

Que. 27 Plants are divided into _____ groups.

1. 6
2. 7
3. 5
4. 4

Correct Option - 3

Que. 28 Antibiotics are useful for which type of infections?

1. Only bacteria
2. Only virus
3. Both bacteria and virus
4. Neither bacteria nor virus

Correct Option - 1

Que. 29 Acid rain is caused by oxides of _____.

1. Phosphorus and Carbon
2. Sulphur and Nitrogen
3. Sulphur and Phosphorus
4. Nitrogen and Carbon

Correct Option - 2

Que. 30 What is the example of vector quantity?

- A. Mass
- B. Temperature
- C. Velocity
- D. Length

1. D
2. B
3. A
4. C

Correct Option - 4

Que. 31 Which chemical is used in developing a photo from a 'photographic film'?

1. Sodium Carbonate
2. Sodium Sulfate
3. Silver Bromide
4. Hydroquinone

Correct Option - 3

Que. 32 Which gas is mainly present in CNG?

1. Gobar
2. Coal
3. Dihydrogen
4. Methane

Correct Option - 4

Que. 33 Which gas is used for filling aero plane tyres?

1. Nitrogen
2. Neon
3. Argon
4. Krypton

Correct Option - 1

Que. 34 What is the SI unit of electric current?

1. Volt
2. Coulomb
3. Ampere
4. Ohm

Correct Option - 3

Que. 35 Which of the following fungus is used in baking industry?

1. Morels
2. Black mold
3. Yeast
4. Mushroom

Correct Option - 3

Que. 36 Choose the alternative which closely resembles the mirror image of the given combination:

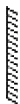
BRISK

1. B R I S K
 2. B R I S K
 3. B R I S K
 4. B R I S K
1. 1
 2. 2
 3. 3
 4. 4

Correct Option - 4

Que. 37 If a mirror is placed on the shaded line, then which of the following options in the mirror image of the given figure?

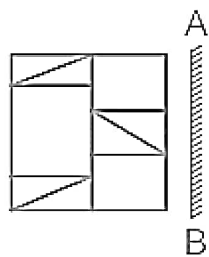
TIG67KH

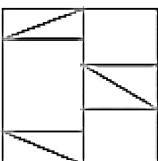


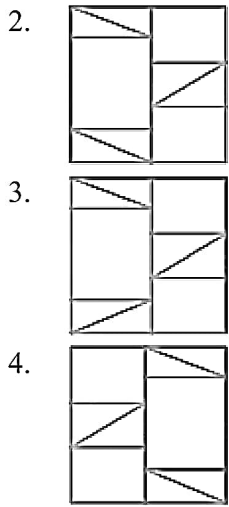
1. HK76GIT
2. HKZ9GIT
3. LIGΘYKH
4. HKZθGIT

Correct Option - 4

Que. 38 If a mirror is placed on the line AB, then which of the answer figures is the right image of the given figure?



1. 



Correct Option - 4

Que. 39 Ananya is the mother of Satya and Stephen is the son of Bhima. Ernest is the brother of Ananya. If Satya is the sister of Stephen, how is Bhima related to Ernest?

1. Mother
2. Brother
3. Son
4. Brother in law

Correct Option - 4

Que. 40 Karim ranks 16th from the top in a class of 49 students. What is the rank from the bottom ?

1. 33
2. 32
3. 34
4. 35

Correct Option - 3

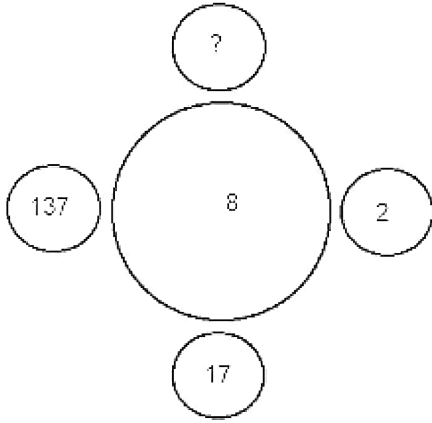
Que. 41 Person A is standing exactly in-between P and Q in a queue. P is 13th from the front of the queue and Q is 11th from the end of the queue. P and A have 3 persons between them. What is the total number people in the queue?

1. 29
2. 31
3. 30
4. 28

Correct Option - 2

Que. 42

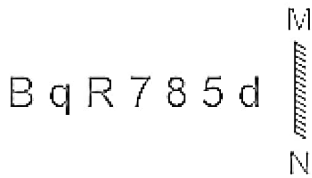
In the following question , select the number which can be placed at the sign of question mark (?) from the given alternatives.



1. 98
2. 1028
3. 1097
4. 1284

Correct Option - 3

Que. 43 Select the correct mirror image of the given combination when the mirror is placed at MN as shown.



1. ɹ 8 7 R p B
2. ɹ b 8 7 R p B
3. b ɹ 8 7 R p B
4. b ɹ 8 7 R p

Correct Option - 3

Que. 44 Words given on the left side of (::) are related with each other by some Logic/Rule /Relation. Select the missing word/word pair on the right side of (::) from the given alternatives based on the same Logic/Rule/Relation.

View : Binocular :: ?

1. Spade : Dig
2. Pen : Write
3. Shoot : Gun
4. Feed : Spanner

Correct Option - 3

Que. 45 **Direction:** Two words are given. These words are related to each other in some way. Another word is also given. Find out the relationship between the first two words and choose the word from the given alternatives, which bears the same relationship to the third word, as the first two bears.

Doctor : Nurse :: ? : Follower

1. Employer
2. Leader
3. Worker
4. Manager

Correct Option - 2

Que. 46 **Direction:** In the following question, a group of inter related words is given. Choose a word from the given alternatives, that is similar to the given words and hence belongs to the same group.

If N = 14; NOSE = 53, then NOCK = ?

1. 44
2. 43
3. 45
4. 42

Correct Option - 2

Que. 47 In the following question, select the missing number from the given series.

T	R	H
D	M	W
48	62	?

1. 70
2. 62
3. 64
4. 68

Correct Option - 2

Que. 48 Select the option that is related to the third word in the same way as the second word is related to the first word. (The words must be considered as meaningful English words and must not be related to each other based on the number of letters/number of consonants/vowels in the word)

India : Asia :: Brazil : ?

1. Europe
2. North America
3. South America

4. Africa

Correct Option - 3

Que. 49 A boy pointing towards a girl said she is the daughter of my father's sister's only brother's wife. How is that girl related to boy's brother?

1. Niece
2. Sister
3. Wife
4. Sister in law

Correct Option - 2

Que. 50 Complete the analogy,
Ocean : Water :: Glacier : ?

1. Mountain
2. Snow
3. Cave
4. Field

Correct Option - 2

Que. 51 Which one set of letters when sequentially placed at the gaps in the given letter series shall complete it?

k j i _ k _ i _ k j _ i k _ i _

1. j j i i j i
2. i j j j j j
3. i i i j j
4. i j i i j i

Correct Option - 4

Que. 52 If in a coding system EDEKA is coded as 54521, then how will AORBG be coded in the same coding system?

1. 16927
2. 19672
3. 16279
4. 17269

Correct Option - 1

Que. 53

In a row of boys A is 9th from the left end whereas B is 8th from the right side. If C is sitting exactly between A & B and C is 15th from the right end. Find the total number of people in that row.

1. 28
2. 30
3. 27
4. 26

Correct Option - 2

Que. 54 **Direction:** Question below has a main statement followed by four statement labelled A, B, C and D. Choose the ordered pair of statements where the first implies the second, and the two statements are logically consistent with the main statement.

If the bowler can bat, then the captain cannot bat

- (A) The bowler cannot bat
(B) The captain cannot bat
(C) The bowler can bat
(D) The captain can bat

1. CB and DA
2. BA and CD
3. Only CB
4. Only BA

Correct Option - 1

Que. 55 **Direction:** In each of the following questions, select the related word from the given alternatives:-
Amnesia : Memory :: Paralysis : ?

1. Legs
2. Movement
3. Limbs
4. Handicapped

Correct Option - 2

Que. 56 In a row at a bus stop, 'A' is 7th from the left and 'B' is 9th from the right. They both interchange their positions. Now A becomes 11th from the left. How many people are there in the row?

1. 19
2. 10
3. 18
4. 20

Correct Option - 1

Que. 57 **Direction:** Choose the correct answer from the given alternatives that will complete the series.

_ xx _ yx _ yy _ xy _ xxy

1. xxxyy
2. yxyxy
3. yyxxy
4. yyyxx

Correct Option - 3

Que. 58 The height of the mango tree and the coconut tree are the same. Banana tree is smaller than palm tree. The guava tree is shorter than the banana tree but taller than the mango tree. Which tree is the tallest?

1. Palm
2. Mango
3. Banana
4. Coconut

Correct Option - 1

Que. 59 Study the given pattern carefully and select the number that can replace the question mark (?) in it.

15 30 33

16 26 19

62 112 ?

1. 124
2. 128
3. 117
4. 104

Correct Option - 4

Que. 60 In a certain code language, 'CAMERA' is written as '242', 'BROKEN' is written as '194', how will 'CENTRE' be written in that language?

1. 198
2. 200
3. 190
4. 194

Correct Option - 4

Que. 61 **DIRECTIONS:** Each question has a main statement followed by four statements labelled A, B, C and D.

Choose the ordered pair of statements, where the first statement implies the second, and the two statements are logically consistent with the main statement.

If I eat healthy, I will live healthy.

- A. I ate healthy.
- B. I lived Healthy.
- C. I did not eat healthy.
- D. I did not live healthy.

- 1. AB
- 2. BD
- 3. DA
- 4. CD

Correct Option - 1

Que. 62 Consider the following arrangement that has some missing letters:

a b _ b b _ a b a _ b a _ b a b _ a

Which one set of letters when subsequently placed at the gaps in the above letter series shall complete it?

- 1. aabab
- 2. bbabb
- 3. abbab
- 4. aaaab

Correct Option - 1

Que. 63 In the following question below are given some statements followed by some conclusions based on those statements Taking the given statements to be true even if they seem to be at variance from commonly known facts. Read all the conclusions and then decide which of the given conclusion logically follows the given statements.

Statements:

- I. All H are G.
- II. Some G are I.

Conclusion:

- I. No I are H.
- II. All I are G.

- 1. Only conclusion II follows
- 2. Both conclusions I and II follows
- 3. Only conclusion I follows
- 4. Neither conclusion follows

Correct Option - 4

Que. 64 B and D are cousin brothers. A is the father of B and the uncle of C, who is the sister of D. C's mother is married to E, who is the brother of A. How is B related to C's father?

- 1. Brother-in-law

2. Son
3. Nephew
4. Uncle

Correct Option - 3

Que. 65 In a certain code language, if MARUTI is written as NZSTUH and HYUNDAI is written as IXVMEZJ, then how will NISSAN be written in that code language?

1. MHRRZM
2. OJTTBO
3. OHTRBM
4. MJRTZO

Correct Option - 3

Que. 66 Two statements are followed by two conclusions numbered I and II. You have to consider these statements to be true, even if they seem to be at variance with commonly known facts. Decide which of the given conclusions logically follow/s from the given statement

Statement:

All families are happy.

Some happy are healthy.

Conclusions:

(I) Some healthy are family.

(II) No healthy are family.

1. Only I follow
2. Only II follows
3. Either I or II follows
4. Neither I nor II follows

Correct Option - 3

Que. 67 Study the given pattern carefully and select the number that can replace the question mark (?) in it.

7	6	85
5	8	89
12	13	?

1. 213
2. 313
3. 113
4. 343

Correct Option - 2

Que. 68 Select the correct mirror image of the given figure when the mirror is placed at MN as shown below.



1. FURNITURE
2. FURNITURE
3. FURNITURE
4. FURNITURE

Correct Option - 1

Que. 69 Find the missing term in diagram shown below?

CK 16 9 JR

OS 24 19 TX

KM ? ? PV

1. 14, 21
2. 21, 14
3. 56, 84
4. 84, 56

Correct Option - 2

Que. 70 Which one set of letters when sequentially placed at the gaps in the given letter series shall complete it?

h _ eg _ fegh _ eghfe _

1. gffh
2. hhgg
3. ffgh
4. fhfg

Correct Option - 4

Que. 71 The value of 'x' in $81^{x-3} \div 81^4 = \sqrt[6]{9^{24}}$ is

1. 8
2. 7
3. 9
4. 3

Correct Option - 3

Que. 72 A metro train runs at the speed of 40 km/h from station A to station B covering a distance of 30 km. It stops at 5 stations in between, for 5 minutes at each station. What is the average speed (in km/h) of the train from A to B?

1. 24.7
2. 25.7
3. 27.5
4. 22.5

Correct Option - 2

Que. 73 The length and the breadth of a rectangle are in the ratio of 3 : 4, if the area of the rectangle is 300 cm^2 , what will be the difference between the length and the breadth (in cm)?

1. 10
2. 7
3. 4
4. 5

Correct Option - 4

Que. 74 Which of the given values is completely divisible by 18?

1. 1642
2. 3612
3. 7218
4. 2427

Correct Option - 3

Que. 75 The compound interest on a sum of money for 2 years at 10% per annum is 2100. What will be the simple interest on the same sum for double the time at the same rate of interest?

1. 3600
2. 4000
3. 4100
4. 4200

Correct Option - 2

Que. 76 At present, Tarun is twice the age of Vishal and half the age of Tanvi. After four years, Tarun will be 1.5 times Vishal's age and Tanvi will be 2.5 times of Vishal's age. What is Tanvi's present age?

1. 12 years
2. 8 years
3. 20 years
4. 16 years

Correct Option - 4

Que. 77 If 20% of P = 30% of Q = 1/6 of R, then P : Q: R is

1. 2 : 3 : 16
2. 3 : 2 : 16
3. 10 : 15 : 18
4. 15 : 10 : 18

Correct Option - 4

Que. 78 What should come in place of the question mark (?) in the following question?

$$(0.064) \times (0.4)^7 = (0.4)^? \times (0.0256)$$

1. 2
2. 7
3. 8
4. 6

Correct Option - 4

Que. 79 A student find the average of ten 2 digit numbers, and while copying numbers by mistake, he writes one number with its digit interchanged, as a result of that his average is 3.6 less that the correct answer, then find the difference of the digits of the number in which he made the mistake.

1. 2
2. 3
3. 4
4. 5

Correct Option - 3

Que. 80 N is the largest two-digit number, which when divided by 3, 4 and 6 leaves the remainder 1, 2 and 4 respectively. What is the remainder when N is divided by 5?

1. 4
2. 2
3. 0
4. 1

Correct Option - 1

Que. 81 At a certain sum of money with the interest rate of 6% per annum for 4 years. the simple interest is Rs. 4500. Find the compound interest (compounding annually) of 2 years at the same sum when the rate of interest is 4% per annum,

1. Rs. 1,530

2. Rs. 1,430
3. Rs. 1,830
4. Rs. 1,560

Correct Option - 1

Que. 82 Which of the following number is divisible by 21?

1. 2371
2. 2373
3. 2375
4. 2379

Correct Option - 2

Que. 83 A person's present age is two-fifth of the age of his mother. After 8 years, he will be one-half of the age of his mother. How old is the mother at present?

1. 38
2. 40
3. 42
4. 44

Correct Option - 2

Que. 84 Find the value of x in the following equation.

$$45\% \text{ of } 360 + 30\% \text{ of } 400 = 25\% \text{ of } x$$

1. 1112
2. 1200
3. 1128
4. 1180

Correct Option - 3

Que. 85 The ratio of milk and water in a mixture is 4 : 2 after adding 5 liters of water, the ratio of milk and water in the mixture becomes 4 : 4 Amount of milk in the mixture?

1. 10
2. 03
3. 01
4. 05

Correct Option - 1

Que. 86 If the speed of A, B, and C starts walking on a circular ground with 36 km/h, 54km/h, and 18 km/h respectively. If the length of the circular ground is 1200 m then find after how much time they meet at

the starting point again.

1. 120 seconds
2. 240 seconds
3. 180 seconds
4. 360 seconds

Correct Option - 2

Que. 87 If $(p + q) = 5$ and $pq = 18$, then what is the value of $p^3 + q^3$?

1. -270
2. 125
3. -145
4. 135

Correct Option - 3

Que. 88 In an examination, it is required to get 40% of the aggregate marks to pass. A student gets 265 marks and is declared fail by 55 marks. What are the maximum aggregate marks a student can get?

1. 900
2. 750
3. 600
4. 800

Correct Option - 4

Que. 89 A bought an article and spent Rs. 550 on its repairs. He then sold it to B at a profit of 10%. B sold it to C at a loss of 20%. C finally sold it for Rs. 6864 at a profit of 30%. How much did A pay for the article? (In Rs.)

1. 5750
2. 5550
3. 5650
4. 5450

Correct Option - 4

Que. 90 The area of a square and a rectangle are equal. The length of the rectangle is 8 cm more than the length of any side of the square and the breadth is 6 cm less than the length of any side of the square. The perimeter (in cm) of the rectangle will be:

1. 120 cm
2. 80 cm
3. 100 cm
4. 140 cm

Correct Option - 3

Que. 91 10 years ago, the average age of a husband and his wife was 42 years. Now, the average age of the family consisting of the husband, wife and their son is 39 years. The present age of the son is:

1. 20 Years
2. 15 Years
3. 10 Years
4. 13 Years

Correct Option - 4

Que. 92 Three friends A, B, C invested in a business in the ratio of 3 : 2 : 6. After 6 months C withdraw half his capital. If the total profit earned for the year is Rs.53010 (in Rs.).Then Profit made by A is

1. 16740
2. 19740
3. 17740
4. 18740

Correct Option - 1

Que. 93 The simple interest on a certain sum for $2\frac{1}{2}$ years at 12% per annum is Rs. 600 less than the simple interest on the same sum for $4\frac{1}{2}$ years at 8% per annum. Then, the sum is :

1. Rs. 20,000
2. Rs. 16,000
3. Rs. 10,000
4. Rs. 8,000

Correct Option - 3

Que. 94 The marked price of an article is ₹100. If the article is sold at a discount of 25%, then 25% profit is realised. The percentage loss or percentage profit made (approximately) if it is sold for ₹20 less than the marked price is:

1. 35% loss
2. $12\frac{1}{2}\%$ loss
3. 25% profit
4. $33\frac{1}{3}\%$ profit

Correct Option - 4

Que. 95 Which is the largest fraction among the following?

$$4\frac{5}{6}, 6\frac{7}{9}, 7\frac{8}{9}, 7\frac{7}{10}$$

1. $6\frac{7}{9}$
2. $7\frac{8}{9}$
3. $7\frac{7}{10}$
4. $4\frac{5}{6}$

Correct Option - 2

Que. 96 What is the difference in the amount of interest on Rs 20,000 if it is invested for 2 years at 10% compound interest and 10% interest under simple interest compounded annually?

1. Rs 200
2. Rs 0
3. Rs 100
4. Rs 2,000

Correct Option - 1

Que. 97 A dairy farmer's can contains 6 litres of milk. His wife adds some water to it such that milk and water are in the ratio 4 : 1. How many litres of milk should the farmer add so that the milk and water are in the ratio 5 : 1?

1. 1.5
2. 1.2
3. 1.0
4. 1.8

Correct Option - 1

Que. 98 The sum of two natural numbers, x and y, is 320 and the HCF of x and y is 20. If $x > y$, how many such possible pairs of x and y are there?

1. 8
2. 4
3. 2
4. 6

Correct Option - 2

Que. 99 An iMac is available on a lump sum payment of ₹ 90,000 or on 6 monthly EMIs at a simple interest rate of 24% p.a after making an upfront payment ₹ 27,000. Calculate the amount of each instalment.

1. 22500
2. 15500
3. 15000
4. 11200

Correct Option - 4

Que. 100 The difference between compound interest and simple interest is Rs. 228 for a certain sum of money at 8% per annum for $1\frac{1}{2}$ years, when compound interest is compounded half-yearly and simple interest is computed yearly. What is the sum?

1. Rs. 46,900
2. Rs. 46,531
3. Rs. 47,000
4. Rs. 46,875

Correct Option - 4

