

DO NOT OPEN THIS TEST BOOKLET UNTIL YOU ARE ASKED TO DO SO

Test Booklet Series

T. B. C. : AS - 16/17

A

1405

**TEST BOOKLET
MEDICAL OFFICER
(ASSISTANT SURGEON)**

Serial No. _____

Time Allowed : 3 Hours

Maximum Marks : 200

: INSTRUCTIONS TO CANDIDATES :

1. IMMEDIATELY AFTER THE COMMENCEMENT OF THE EXAMINATION, YOU SHOULD CHECK THAT THIS TEST BOOKLET **DOES NOT** HAVE ANY UNPRINTED OR TORN OR MISSING PAGES OR ITEMS ETC. IF SO, GET IT REPLACED BY A COMPLETE TEST BOOKLET OF THE SAME SERIES ISSUED TO YOU.
2. ENCODE CLEARLY THE TEST BOOKLET SERIES A, B, C OR D, AS THE CASE MAY BE, IN THE APPROPRIATE PLACES IN THE ANSWER SHEET USING BALL POINT PEN (BLUE OR BLACK).
3. You have to enter your **Roll No.** on the Test Booklet in the Box provided alongside. **DO NOT** write *anything else* on the Test Booklet.
4. **YOU ARE REQUIRED TO FILL UP & DARKEN ROLL NO., TEST BOOKLET / QUESTION BOOKLET SERIES IN THE ANSWER SHEET AS WELL AS FILL UP TEST BOOKLET / QUESTION BOOKLET SERIES AND SERIAL NO. AND ANSWER SHEET SERIAL NO. IN THE ATTENDANCE SHEET CAREFULLY. WRONGLY FILLED UP ANSWER SHEET ARE LIABLE FOR REJECTION AT THE RISK OF THE CANDIDATE.**
5. This Test Booklet contains **200** items (questions). Each item (question) comprises four responses (answers). You have to select the correct response (answer) which you want to mark (darken) on the Answer Sheet. In case, you feel that there is more than one correct response (answer), you should mark (darken) the response (answer) which you consider the best. In any case, choose **ONLY ONE** response (answer) for each item (question).
6. You have to mark (darken) all your responses (answers) **ONLY** on the **separate Answer Sheet** provided by using **BALL POINT PEN (BLUE OR BLACK)**. See instructions in the Answer Sheet.
7. All items (questions) carry equal marks. All items (questions) are compulsory. Your total marks will depend only on the number of correct responses (answers) marked by you in the Answer Sheet.
8. Before you proceed to mark (darken) in the Answer Sheet the responses to various items (questions) in the Test Booklet, you have to fill in some particulars in the Answer Sheet as per the instructions sent to you with your **Admission Certificate**.
9. After you have completed filling in all your responses (answers) on the Answer Sheet and after conclusion of the examination, you should hand over to the Invigilator the *Answer Sheet* issued to you. You are allowed to take with you the candidate's copy / second page of the Answer Sheet along with the *Test Booklet*, after completion of the examination, for your reference.
10. Sheets for rough work are appended in the Test Booklet at the end.

DO NOT OPEN THIS TEST BOOKLET UNTIL YOU ARE ASKED TO DO SO**SEAL**

Test Prime

ALL EXAMS,
ONE SUBSCRIPTION



70,000+
Mock Tests



Personalised
Report Card



Unlimited
Re-Attempt



600+
Exam Covered



Previous Year
Papers



500%
Refund



ATTEMPT FREE MOCK NOW

1. Muscle develops from the second bronchial arch :
 - (A) Platysma
 - (B) Anterior belly of diaphragm
 - (C) Stylopharyngeus
 - (D) Styloglossus
2. Lamina propria of stomach is derived from :
 - (A) Endoderm
 - (B) Ectoderm
 - (C) Intra embryonic mesoderm
 - (D) Extra embryonic mesoderm
3. Hair is regarded as a part of :
 - (A) Stratum spinosum
 - (B) Stratum granulosum
 - (C) Stratum lucidum
 - (D) Stratum corneum
4. The temporal pole of the brain consists the :
 - (A) Olfactory area
 - (B) Septal area
 - (C) Amygdaloid complex
 - (D) Hippocampus
5. Corpora arenacea is found in :
 - (A) Pituitary gland
 - (B) Adrenal gland
 - (C) Prostate gland
 - (D) Pineal gland
6. Electroencephalographic (EEG) waves originated from :
 - (A) Dendritic tree
 - (B) Neuron cell body
 - (C) Axon hillock
 - (D) Axon terminals
7. Secretion of which of the following is not inhibited by Somatostatin ?
 - (A) Thyroid stimulating hormones
 - (B) Growth hormone
 - (C) Corticotropin
 - (D) Gonadotropin
8. Thyroid hormone secretion is facilitated by all Except :
 - (A) Thyroid stimulating hormones
 - (B) Thyroid peroxidase
 - (C) Pendrin
 - (D) Thyroglobulin
9. Spermatogenesis is not facilitated by :
 - (A) Follicular stimulating hormone
 - (B) Testosterone
 - (C) Inhibin
 - (D) Leutinizing Hormone
10. Renal Counter current mechanism helps in maintaining :
 - (A) Maintaining pH
 - (B) Maintaining osmolality
 - (C) Concentrating urine
 - (D) Maintaining Plasma volume
11. Major fluid compartments composition analysis revealed that :
 - (A) The major cell fluid cation is Na^+
 - (B) The major blood plasma cation is K^+
 - (C) One of the major intracellular anions is Cl^-
 - (D) One of the major intracellular anions is phosphate

12. Which interaction is not formed when protein subunits combine to form a quaternary structure ?
- (A) Disulfide bond formation
 - (B) Hydrogen bonding
 - (C) Hydrophobic interaction
 - (D) van der Waals forces
13. Which one of the following statements is not correct ?
- (A) The side-chains of the amino acids cysteine and methionine absorb light at 280 nm
 - (B) Polypeptides are named as derivatives of the C-terminal aminoacyl residue
 - (C) The C, N, O and H atoms of a peptide bond are coplanar
 - (D) A linear pentapeptide contains four peptide bonds
14. Cofactors containing the adenosyl group include all of the following except :
- (A) NAD
 - (B) NADP
 - (C) FAD
 - (D) FMN
15. Identify the amino acid that is the major contributor to the transport of nitrogen destined for excretion as urea :
- (A) Alanine
 - (B) Glutamine
 - (C) Glycine
 - (D) Lysine
16. The group translocation type of transport system :
- (A) Does not require metabolic energy
 - (B) Involves the transport of two different solute molecules simultaneously
 - (C) Has been involved in fatty acids
 - (D) Results in the alteration of the substrate molecule during the transport process
17. Which one of the following statements concerning amino acids is correct ?
- (A) Alanine is ketogenic
 - (B) Amino acids that are catabolised to acetyl coenzyme A are glucogenic
 - (C) Branched chain amino acids are catabolised primarily in liver
 - (D) Cysteine is essential for individuals consuming a diet severely limited in methionine
18. Which one of the lipids contains sialic acid ?
- (A) Cerebrosides
 - (B) Sphingomyelins
 - (C) Gangliosides
 - (D) Phosphatidylinositols
19. Sphingomyelins differ from the other sphingolipids in that they are :
- (A) Not based on a ceramide core
 - (B) Acidic rather than neutral at physiological Ph
 - (C) The only types containing N-acetylneuraminic acid
 - (D) The only types that are phospholipids

20. Which of the following antitumor agents acts by impairing de novo Purine synthesis ?
- (A) Acyclovir
(B) 5-fluorouracil
(C) Methotrexate
(D) Allopurinol
21. Which of the following statement about Zero order kinetics of elimination of drugs is true ?
- (A) Constant fraction of drug is eliminated per unit time
(B) Clearance remains constant
(C) Rate of elimination of drug is constant
(D) Most of the drugs are eliminated by zero order kinetics
22. Which of the following drug is absolutely contraindicated in a pregnant woman suffering from hypertension ?
- (A) Hydralazine
(B) Methyldopa
(C) Amlodipine
(D) Enalapril
23. Hydrochlorothiazide and Triamterene has opposite effect on urinary potassium excretion. This is which type drug antagonism ?
- (A) Physical
(B) Chemical
(C) Physiological
(D) Receptor
24. All of the following are effects of atropine EXCEPT :
- (A) Decreases tracheobronchial secretions
(B) Causes contraction of the radial muscle of the iris
(C) Abbreviates refractory period of atrioventricular node
(D) Decreases gastric acid secretion
25. The drug of choice for the treatment of clostridium difficile associated diarrhea is :
- (A) Ciprofloxacin
(B) Clindamycin
(C) Metronidazole
(D) Oxytetracycline
26. Progestin used in oral contraceptive pills that antagonizes effect of aldosterone is :
- (A) Norgestrel
(B) Norethindrone
(C) Desogestrel
(D) Drospirenone
27. Which of the following drug used in osteoporosis stimulates formation of bone ?
- (A) Bisphosphonates
(B) Calcitonin
(C) Teriparatide
(D) Denosumab
28. Lubiprostone is used for the treatment of :
- (A) Constipation
(B) Diarrhea
(C) Vomiting
(D) Peptic Ulcer

29. Ketamine is preferred anesthetic for the following EXCEPT :
- Short operation in asthmatics
 - Hypertensives
 - Hypovolemic shock due to excessive bleeding
 - Dressing of burns
30. All of the following are Serotonin Norepinephrine Reuptake Inhibitors (SNRI) except:
- Venlafaxine
 - Duloxetine
 - Milnacipran
 - Tianeptin
31. Immune complex deposition in blood vessels is characteristics of which type of hypersensitivity reaction ?
- Type I
 - Type II
 - Type III
 - Type IV
32. Which of the following is an irreversible cell injury ?
- Apoptosis
 - Cloudy swelling
 - Hydropic change
 - Steatosis
33. The genetic defect underlying Sickle cell anemia is :
- Frameshift mutation
 - Gene deletion
 - Point mutation
 - Robertsonian translocation
34. Aschoff bodies are the characteristic of :
- Bacterial endocarditis
 - Hypertrophic cardiomyopathy
 - Myocardial infarction
 - Rheumatic carditis
35. Cysticercosis results more commonly from ingestion of :
- Fecal contaminated vegetables
 - Milk without boiling
 - Undercooked beef
 - Undercooked pork
36. The following is the data of a 10 year old girl investigated for anemia : Hb 7.2 g/dl ; Hematocrit 26% MCV 62 fl, MCH 19 pg, MCHC 27g/dl, RDW cv 20%. Which of the following clinical diagnosis is best supported by these findings ?
- Beta thalassemia minor
 - Dimorphic anemia
 - Iron deficiency
 - Macrocytic anemia
37. Which of the following gastrointestinal tumors demonstrates CD-117 (c-kit) positivity ?
- Adenocarcinoma stomach
 - Carcinoid tumor
 - Gastrointestinal stromal tumor
 - MALT lymphoma
38. Gleason grading is applied in carcinoma of :
- Breast
 - Kidney
 - Lung
 - Prostate

39. Which of the following is best monitored by using alpha fetoprotein ?
- (A) Adenocarcinoma pancreas
 - (B) Hepatocellular carcinoma
 - (C) Seminoma
 - (D) Yolk sac tumor
40. Several large cells with 'crumbled tissue paper' like appearance were seen in a bone marrow biopsy of a 3 year old boy with hepatosplenomegaly and failure to thrive. What is the most probable diagnosis ?
- (A) Alpha 1 antitrypsin deficiency
 - (B) Gaucher disease
 - (C) Niemann Pick disease
 - (D) Mycopolysaccharidosis
41. Generation time of *Escherichia coli* is :
- (A) 20 seconds
 - (B) 20 minutes
 - (C) 20 hours
 - (D) 20 days
42. Which immunoglobulin class is heat labile ?
- (A) IgA
 - (B) IgD
 - (C) IgE
 - (D) IgG
43. EAC rosettes are formed by :
- (A) T-lymphocytes
 - (B) B-lymphocytes
 - (C) Both (A) and (B)
 - (D) None of the above
44. The causative agent of Waterhouse-Friderichsen syndrome is :
- (A) *Streptococcus pyogenes*
 - (B) *Enterococcus*
 - (C) *Neisseria meningitidis*
 - (D) *Pseudomonas*
45. The causative agent of Buruli Ulcer is :
- (A) *Mycobacterium avium*
 - (B) *Mycobacterium ulcerans*
 - (C) *Mycobacterium fortuitum*
 - (D) *Mycobacterium smegmatis*
46. Haemolytic uraemic syndrome is caused by :
- (A) Enteropathogenic *Escherichia coli*
 - (B) Enteroaggregative *Escherichia coli*
 - (C) Verocytotoxigenic *Escherichia coli*
 - (D) None of the above
47. Milk ring test is useful to identify the following infection/infections :
- (A) Brucellosis
 - (B) Salmonellosis
 - (C) Tuberculosis
 - (D) Diphtheria
48. *Treponema pallidum* can be cultivated in :
- (A) Blood agar medium
 - (B) Thayer Martin medium
 - (C) Wilson of Blair medium
 - (D) Rabbit testis

49. Neuraminidase spikes are not present in :
- (A) Influenza virus A
(B) Influenza virus B
(C) Influenza virus C
(D) None of the above
50. Which of the following is a non-sense codon ?
- (A) UGA
(B) GCC
(C) AAG
(D) CAG
51. In India, a boy below _____ year cannot be charged with rape.
- (A) 12 years
(B) 14 years
(C) 21 years
(D) No such limit
52. Post-mortem calorificity is seen in poisoning due to :
- (A) Cyanide
(B) Opium
(C) Arsenic
(D) Strychnine
53. Which bacteria takes part in Adipocere formation ?
- (A) B proteus
(B) Staphylococci
(C) Cl. ruelchi
(D) Streptococcus
54. Which enzyme increases after one hour of mechanical injury ?
- (A) Aminopeptidase
(B) Acid phosphatase
(C) Alkaline phosphatase
(D) Esterase
55. Cause of death in crush syndrome :
- (A) Acute renal failure
(B) Infection
(C) Fat embolism
(D) Shock and haemorrhage
56. Brush burn is :
- (A) High velocity electrocution
(B) Scald
(C) Bullet injury
(D) Grazed abrasion
57. Smokeless gun-powder consists of followings, except :
- (A) Nitro cellulose
(B) Nitrobenzene
(C) Nitroglycerine
(D) Nitroguanidine
58. Adduction fracture of Hyoid bone seen in :
- (A) Manual strangulation
(B) Bansdola
(C) A typical hanging
(D) Smothering
59. La – Facies sympathique is seen in :
- (A) Hanging
(B) Cardiac temponade
(C) Whip-lash injury
(D) Tonsilar herniation

60. Natural sex offences include all, except :
- Incest
 - Rape
 - Adultry
 - Triadism
61. Catamite refers to :
- Active agent in sodomy
 - Passive agent in sodomy
 - Small child acting as passive agent in sodomy
 - Female as passive agent in sodomy
62. All are tests for seminal stain, except :
- Takayama test
 - Barberio's test
 - Florence test
 - Acid phosphatase test
63. Radiological signs of a dead born includes all, except :
- Robert's sign
 - Dueishalo sign
 - Spalding's sign
 - Mc Ewin's sign
64. Filgree burn is due to :
- Lightening
 - Electric shock
 - Radiation burn
 - Micro – oven burn
65. Impotency in female is :
- Rigidity
 - Frigidity
 - Sterility
 - Nymphomania
66. Nischay kits are used for diagnosis of :
- Malaria
 - Pregnancy
 - MDR-TB
 - Dengue
67. Monitoring measures :
- The continuous changes in program's activities
 - The outcomes and impact of a program's activities
 - How closely a program kept to its budget
 - How well the program was implemented
68. Which of the following drug is not given in continuation phase of treatment of MDR-TB ?
- Levofloxacin
 - Kanamycin
 - Ethambutol
 - Ethionamide
69. As per ICD classification the code for provisional assignment of new diseases of uncertain disease is :
- H code
 - X code
 - D code
 - U code
70. When individuals are chosen at regular intervals (for example every fifth) from the sampling frame, it is a :
- Simple random sampling
 - Systematic sampling
 - Stratified sampling
 - Typical case sampling

71. Which of the following measure the approximate magnitude of completed family size ?
- (A) Total fertility rate
 - (B) Gross reproduction rate
 - (C) Net reproduction rate
 - (D) General fertility rate
72. Recommended treatment for uncomplicated falciparum malaria in 1st trimester pregnancy is :
- (A) Quinine
 - (B) Chloroquine
 - (C) Artesunate
 - (D) Artesunate plus Sulfadoxin-Pyrimethamine
73. Byssinosis is due to inhalation of :
- (A) Cotton fibre dust
 - (B) Sugarcane dust
 - (C) Mouldy hay
 - (D) Silica dust
74. Which of the following is not true regarding rabies ?
- (A) The incubation period in man is usually 1-3 months
 - (B) The causative agent is lyssavirus type-1
 - (C) Post exposure prophylaxis for Cat-III exposure is by vaccine only
 - (D) Cell culture vaccine can be given intradermally.
75. Reconstructive surgery in leprosy is an example of :
- (A) Primary prevention
 - (B) Secondary prevention
 - (C) Tertiary prevention
 - (D) Quaternary prevention
76. The number of years of life that could be added by intervention is :
- (A) HALE
 - (B) DALY
 - (C) QALY
 - (D) DFLE
77. All are true regarding case control study, except :
- (A) Proceeds from effect to cause
 - (B) Starts with disease
 - (C) Involves large no of subjects
 - (D) Yields relatively quick results
78. The preferred vaccines for adolescents are all, except ;
- (A) MMR
 - (B) Td
 - (C) HPV
 - (D) Hib
79. A series of speeches on a selected subject is called :
- (A) Seminar
 - (B) Panel discussion
 - (C) Symposium
 - (D) Workshop
80. RHIME is a method of survey of :
- (A) Child birth
 - (B) Maternal death
 - (C) IUCD insertion
 - (D) Immunization coverage

81. Comedones are a feature of which disease ?
(A) Rosacea
(B) Psoriasis
(C) Lichen planus
(D) Acne
82. Psoriasis does not involve :
(A) Skin
(B) Nails
(C) Eyes
(D) Joints
83. Most common site for primary chancre is :
(A) Glans penis
(B) Shaft
(C) Coronal sulcus
(D) Scrotum
84. Glove and stocking sensory loss is a feature of :
(A) Psoriasis
(B) Lepromatous leprosy
(C) Indeterminate leprosy
(D) Vitiligo
85. Epistaxis is a feature of :
(A) Lepromatous leprosy
(B) Tuberculoid leprosy
(C) Indeterminate leprosy
(D) Neuritic leprosy
86. Thickening of gastric folds on barium meal may be due to all, EXCEPT.
(A) Lymphoma
(B) Menetrier's disease
(C) Zollinger Ellison syndrome
(D) Typhoid
87. The X-ray photon energy range which produces best contrast with iodine is :
(A) 25 – 30 keV
(B) 30 – 33 keV
(C) 33 keV – 40 keV
(D) 40 keV – 50 keV
88. 'Money bag' appearance of heart is seen in :
(A) Pericardial effusion
(B) Myocarditis
(C) Ventricular septal defect
(D) Tetralogy of Fallot
89. Hepatocellular carcinoma can be treated by :
(A) Surgery
(B) Transarterial chemoembolization
(C) Radio frequency ablation
(D) Any of these
90. Patient's position for a standard chest radiography is :
(A) Back facing towards the X-ray screen
(B) Chest facing towards the X-ray screen
(C) Right side facing X-ray screen
(D) Left side facing X-ray screen

91. Weber Ferguson Incision stands for :
- (A) Sub-Mandibular Incision
 - (B) Sub-Mental Incision
 - (C) Total Mandibulectomy Incision
 - (D) Maxillectomy incision
92. Snow storm appearance in X-ray film is associated with :
- (A) Recurrent Parotitis
 - (B) Maxillary Sinusitis
 - (C) Sub-Mandibular Sialochealitis
 - (D) Osteomyelitis of Mandible
93. Frey's Syndrome could be a consequence of :
- (A) Sub - Mandibular Gland Removal
 - (B) Nasal Bone Reduction and Fixation
 - (C) Parotid Surgery
 - (D) Thyroid Gland Surgery
94. Most common site for Supernumerary tooth is :
- (A) Mandibular Incisor
 - (B) Maxillary Central Incisor
 - (C) Maxillary Canine tooth
 - (D) Maxillary Molars
95. Sjogrens Syndrome is not characterized by :
- (A) Dry eyeball
 - (B) Dry mouth
 - (C) Dry skin
 - (D) Enlarged parotid gland
96. High SAAG (serum-ascites albumin gradient) is seen in all EXCEPT :
- (A) Cirrhosis of liver
 - (B) Congestive cardiac failure
 - (C) Chronic renal failure
 - (D) Nephrotic syndrome
97. All of the following are present on the ipsilateral side of Lateral Medullary Syndrome EXCEPT :
- (A) Diplopia
 - (B) Impaired pain sensation
 - (C) Horner syndrome
 - (D) Facial pain
98. Which is not a characteristic feature of Pseudotumor cerebri ?
- (A) Headache
 - (B) Dilated ventricles
 - (C) Increased opening pressure during LP
 - (D) Papilledema
99. Causes of hemorrhagic Pleural effusion are all EXCEPT :
- (A) Pulmonary infarction
 - (B) Mesothelioma
 - (C) Bronchial adenoma
 - (D) Tuberculosis
100. All of the following are indicated in the immediate post MI period EXCEPT :
- (A) Calcium Channel Blockers
 - (B) Morphine
 - (C) Enalapril
 - (D) Aspirin

101. Necrobiosis lipoidica is seen in :
- (A) Diabetes insipidus
 - (B) Lyme's disease
 - (C) Diabetes mellitus
 - (D) Simmond's disease
102. POEMS syndrome is associated with all EXCEPT :
- (A) Osteolytic Multiple Myeloma
 - (B) Hypertrichosis
 - (C) Papilledema
 - (D) Amenorrhea
103. Faget sign is :
- (A) Tachycardia with hypertension
 - (B) Bradycardia with hyperthermia
 - (C) Tachycardia with hyperthermia
 - (D) Bradycardia with hypothermia
104. Recurrent Meningococcal meningitis occurs in :
- (A) C1 esterase deficiency
 - (B) C2 deficiency
 - (C) C3 deficiency
 - (D) C5-9 deficiency
105. Friedlander Pneumonia refers pneumonia caused by :
- (A) Klebsiella
 - (B) Pneumococcus
 - (C) H. influenza
 - (D) Staphylococcus
106. All are true regarding Bronchiectasis EXCEPT :
- (A) Upper lobe involvement is seen in "dry" Bronchiectasis
 - (B) Antibiotics may be used during exacerbations
 - (C) Mucolytics have proven action in relief of secretions
 - (D) HRCT is gold standard for diagnosis
107. A 68 year old chronic alcoholic presents with ecchymotic patches in the lower extremities. He also has perifollicular hemorrhages fragmented hairs, splinter hemorrhages in nail beds and multiple red tender swellings in the muscle. What is the likely diagnosis ?
- (A) Vitamin K deficiency
 - (B) Vitamin C deficiency
 - (C) Pyridoxine deficiency
 - (D) Chronic Myelogenous leukemia
108. Patient presents with rhabdomyolysis and acute renal failure. What should be done next ?
- (A) Mannitol
 - (B) Forced Alkaline Diuresis
 - (C) Dopamine
 - (D) Hemodialysis
109. A 22 year old female presented with fever cough for 6 months. Chest X-ray shows mediastinal widening and blood tests revealed increased ACE levels. What is the most probable diagnosis ?
- (A) Sarcoidosis
 - (B) Tuberculosis
 - (C) Churg Strauss syndrome
 - (D) Lymphoma

110. A 40 year old man presented with repeated episodes of bronchospasm and hemoptysis. Chest X-ray revealed Perihilar Bronchiectasis. The most likely diagnosis is :
- (A) Sarcoidosis
(B) Idiopathic Pulmonary Fibrosis
(C) Extrinsic Allergic Alveolitis
(D) Bronchopulmonary Aspergillosis
111. Most common cause of embolic stroke is :
- (A) Non-rheumatic Atrial Fibrillation
(B) Carotid Artery Atherosclerosis
(C) Paradoxical embolism
(D) LV aneurysm
112. Which clinical sign is suggestive of elevated pulmonary wedge pressure in Mitral Stenosis ?
- (A) Loud OS
(B) Loud S1
(C) Mid diastolic murmur
(D) Short A2-OS interval
113. Sub-valvular Aortic Stenosis is associated with all of the following EXCEPT :
- (A) Aortic Regurgitation
(B) Coarctation of Aorta
(C) Tricuspid valve atresia
(D) Ventricular Septal Defect
114. All are features of Rabies Encephalitis EXCEPT :
- (A) Tonic spasm of the body
(B) Hyper salivation
(C) Sound phobia
(D) Hypotonic paralysis
115. Patient diagnosed with HIV and Tuberculosis. How to start ATT and c-A. R. T ?
- (A) Start ATT first
(B) Start c-A. R. T first
(C) Start both simultaneously
(D) Start cART only
116. Cardiac output (Fick) in a normal individual in L/m² of body surface area per minute is :
- (A) 2.5-3.6
(B) 3.5-4.6
(C) 4.5-5.6
(D) 5.5-6.6
117. Kala-azar is transmitted to humans by :
- (A) Anopheles mosquito
(B) House fly
(C) Sand fly
(D) Culex mosquito
118. Immunoglobulins are produced by :
- (A) T lymphocytes
(B) B lymphocytes
(C) Eosinophils
(D) Splenic cells

119. Trisomy of chromosome 21 causes :
- Klinefelter syndrome
 - Down's syndrome
 - Edward's syndrome
 - Turner's syndrome
120. Causes of drug induced aplastic anaemia include :
- Chloramphenicol
 - Sulphonamides
 - D-Penicillamine
 - All of the above
121. According to National Immunization Schedule, DPT vaccine is given in which schedule :
- 0, 1, 6 months age
 - 6, 10, 14 weeks with boosters at 16-24 months and 5-6 years age
 - 6, 10, 14 week with booster at 9-12 months of age
 - 0, 1, 6 months with booster at 16-24 months of age
122. Simian crease, sandal gap, up-slanted palpebral fissure with developmental delay are associated with :
- Edward syndrome
 - Patau syndrome
 - Down syndrome
 - Ellis-Van Crevald syndrome
123. Cause for large for date babies is :
- Maternal anemia
 - Maternal hypertension
 - Maternal diabetes
 - Maternal smoking
124. A mother comes with her 10 year old boy complaining that child's eyes seem less open (i. e. ptosis) during evening. What is the most likely diagnosis ?
- Gullian-Barre syndrome
 - Myasthenia gravis
 - Muscular dystrophy
 - Congenital myopathies
125. Dandy Walker malformation occurs due to developmental failure of :
- Floor of 4th ventricle
 - Roof of 4th ventricle
 - Floor of 3th ventricle
 - Roof of 3th ventricle
126. Hypertrophic pyloric stenosis is more common in :
- 1st born male
 - 1st born female
 - Premature males or females
 - Equal in all groups
127. Which of the following disease is associated with coronary artery aneurysm ?
- Takayasu arteritis
 - Kawasaki disease
 - Polyarteritis nodosa
 - Systemic onset JIA

128. Most common cause of meningitis in children $>$ 1 year old :
- (A) *Listeria monocytogenes*
 - (B) *Streptococcus epidermidis*
 - (C) *Staphylococcus aureus*
 - (D) *Streptococcus pneumoniae*
129. Which of the following is not included as a major manifestation under Jones criteria ?
- (A) Carditis
 - (B) Erythema marginatum
 - (C) Fever
 - (D) Subcutaneous nodules
130. Haemophilia A is due to deficiency of :
- (A) Factor VIII
 - (B) Factor IX
 - (C) Factor X
 - (D) Von Willebrand factor
131. In cardiogenic shock which is not correct ?
- (A) Cardiac output is low
 - (B) Vascular resistance is low
 - (C) Venous pressure is high
 - (D) Base deficit is high
132. Shock status of a patient can be determined by dynamic fluid response by giving :
- (A) 250-500 ml fluid over 50-60 minutes
 - (B) 1000-1500 ml fluid over 50-60 minutes
 - (C) 250-500 ml fluid over 50-10 minutes
 - (D) 1000-1500 ml fluid over 5-10 minutes
133. Reactionary haemorrhage (within 24 hours of injury) results from all of the following except :
- (A) Dislodgement of clot
 - (B) Sloughing of wall of vessel
 - (C) Normalisation of blood pressure
 - (D) Vasodilation
134. Secondary haemorrhage usually occurs :
- (A) Within 2 hours of injury
 - (B) Within 24 hours of injury
 - (C) 7-14 days after the injury
 - (D) 6 months after the injury
135. ABO system of blood was discovered by :
- (A) Karl Landsteiner
 - (B) James Blundell
 - (C) Albert Hustin
 - (D) Richard Lower
136. Fresh-Frozen Plasma (FFP) shelf life is :
- (A) 5 years
 - (B) 2 years
 - (C) 5 months
 - (D) 2 months

137. Platelets have shelf life of :
- (A) One day
 - (B) Five days
 - (C) Fifteen days
 - (D) Twenty five days
138. Which of the following is not a complication of massive blood transfusion ?
- (A) Hypocalcaemia
 - (B) Hyponatraemia
 - (C) Hyperkalaemia
 - (D) Hypothermia
139. The inflammatory phase of wound healing begins immediately after wounding and also lasts :
- (A) 2-3 days
 - (B) 4-5 days
 - (C) 6-7 days
 - (D) 8-9 days
140. Which of the following is not a common phase of wound healing ?
- (A) Traumatic phase
 - (B) Inflammatory phase
 - (C) Proliferative phase
 - (D) Remodeling phase
141. Which of the following is not true for vascular anastomosis ?
- (A) Absorbable suture material should be used
 - (B) Smooth initial suture line is essential
 - (C) Knots require multiple throws in order to ensure security
 - (D) The suture must pass from within outwards on the down aspect of anastomosis
142. Which of the following is not true for Nylon suture ?
- (A) It is a polyamide polymer
 - (B) It loses 15-20% of tensile strength per year
 - (C) It causes moderate to high tissue reaction
 - (D) It degrades slowly at approximately 15-20% per year
143. Which of the following is not correct for wound healing by secondary intention ?
- (A) Heals by granulation
 - (B) Heals by contraction
 - (C) Heals by epithelialization
 - (D) Heals by minimal scarring
144. Which of the following is not true for wound healing by primary intention ?
- (A) Wound edges are opposed
 - (B) There is increased inflammation and proliferation
 - (C) Minimal scar
 - (D) Possible when there is minimal surrounding trauma

145. Which of the following is not true for nerve injury ?
- (A) Proximal to would Wallerian degeneration occurs
 - (B) Nerve fibers are attracted to their receptors by neurotropism
 - (C) There is profuse growth of nerve fibres from the cut end
 - (D) Over growth of nerve fibres with poor approximation may lead for neuroma formation
146. Which of the following is not true for tendon injury ?
- (A) There is an intrinsic mechanism which consists of vincular blood flow and synovial diffusion
 - (B) There is an extrinsic mechanism which depends on formation of adhesions between tendon and the tendon sheath
 - (C) Active mobilisation prevents adhesions
 - (D) Should not be splintage
147. Which of the following is not true for compartment syndroms ?
- (A) Typically occur is closed lower limb injuries
 - (B) Characterised by severe pain
 - (C) Distal sensory disturbances
 - (D) Peripheral pulses remain palpable
148. Which is the correct combination of pressure sore frequency in descending order ?
- (A) (a) Ischium (b) Heal (c) Occiput
 - (B) (a) Ischium (b) Occiput (c) Heal
 - (C) (a) Heal (b) Ischium (c) Occiput
 - (D) (a) Heal (b) Ischium (c) Occiput
149. Which of the following is not appropriate strategy for keloid treatment ?
- (A) Excision
 - (B) Excision and steroid injection
 - (C) Excision and radiation
 - (D) Intralesional excision
150. Which of the following is not true for silk suture ?
- (A) It is derived from raw silk from silk worm
 - (B) It is a monofilament
 - (C) It loses 20% tensile strength when wet
 - (D) Fibrous encapsulation in body occurs at 2-3 weeks
151. Hawkins classification is for :
- (A) Fracture of body of talus
 - (B) Fracture of neck of talus
 - (C) Fracture of head of talus
 - (D) Fracture of calcaneum

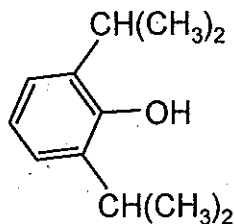
152. O' Donoghue triad include all except :
- (A) Medical Collateral ligament injury
 - (B) Medial meniscus injury
 - (C) Posterior cruciate ligament injury
 - (D) Anterior cruciate ligament injury
153. Altitude of the lower limb in anterior dislocation of hip will be :
- (A) Flexion, external rotation, adduction
 - (B) Flexion, internal rotation, abduction
 - (C) Flexion, internal rotation, adduction
 - (D) Flexion, external rotation, abduction
154. Complications of fracture lateral condyle of humerus include all except :
- (A) Non-union
 - (B) Cubitus varus deformity
 - (C) Tardy ulnar nerve palsy
 - (D) Cubitus valgus deformity
155. "Electric light bulb" appearance on X-ray is characteristic of :
- (A) Posterior dislocation of shoulder
 - (B) Anterior dislocation of shoulder
 - (C) Inferior dislocation of shoulder
 - (D) All of the above
156. Radiological signs of osteoarthritis include all except :
- (A) Narrowing of the joint space
 - (B) Marginal osteophytes
 - (C) Subchondral cyst
 - (D) Subchondral osteoporosis
157. Winging of scapula is seen in :
- (A) Spinal accessory nerve injury
 - (B) Suprascapular nerve injury
 - (C) Injury to long thoracic nerve of Bell
 - (D) Axillary nerve injury
158. Commonest benign lesion of the bone is :
- (A) Fibrous dysplasia
 - (B) Non-ossifying fibroma
 - (C) Osteoid osteoma
 - (D) Osteochondroma
159. Simond's test is diagnostic of :
- (A) Quadriceps tendon rupture
 - (B) Achilles tendon rupture
 - (C) Cruciate ligament tear
 - (D) Meniscal injury
160. Thessaly test is for :
- (A) Meniscal injury
 - (B) Anterior cruciate ligament tear
 - (C) Posterior cruciate ligament tear
 - (D) Collateral ligament injury

161. The most common etiologic agent of acute laryngotracheobronchitis is :
- (A) Respiratory syncytial virus
 - (B) Parainfluenza virus
 - (C) Mycoplasma pneumoniae
 - (D) H. influenzae
162. The goals of endoscopic sinus surgery include all except :
- (A) Promoting drainage of the sinuses
 - (B) Removing all sinus mucosa
 - (C) Removing osteitic bone
 - (D) Restoring normal mucociliary clearance
163. What theoretical plane from medical canthus of the eye to the angle of the mandible divides the facial skeleton into two parts ?
- (A) Ohngren's line
 - (B) Frankford's line
 - (C) Kennedy's line
 - (D) Osguthorpe's line
164. Which of the following is not seen in lateral sinus thrombosis ?
- (A) Griesingers sign
 - (B) Positive Tobey Ayer Test
 - (C) Lilly Crowe sign
 - (D) Gradenigo syndrome
165. Stankiewicz maneuver during FESS prevents injury to :
- (A) Orbit
 - (B) Cribriform plate
 - (C) Fovea ethmoidalis
 - (D) Optic nerve
166. Angular conjunctivitis is caused by which organisms ?
- (A) Moraxella diplobacillus
 - (B) Pneumococci
 - (C) Gonococci
 - (D) Adenovirus
167. Ptosis in Horner's syndrome is due to paralysis of :
- (A) Riolan's muscle
 - (B) Muller's muscle
 - (C) Levator palpebral muscle
 - (D) Orbicularis oculi muscle
168. Amaurotic cat's eye reflex is seen in :
- (A) Papilloedema
 - (B) Retinoblastoma
 - (C) Papillitis
 - (D) Retinitis
169. The best treatment for amblyopia is :
- (A) Orthoptic exercises
 - (B) Occlusion therapy
 - (C) Surgery
 - (D) Spectacles after age 10 years
170. A 3 months old infant with watering lacrimal sac on pressing causes regurgitation of mucopus material. What is the appropriate treatment ?
- (A) Dacryocystorhinostomy
 - (B) Probing
 - (C) Probing with syringing
 - (D) Massage with antibiotics upto age of 6 months

171. Preconceptual intake of which of the following results in decrease in incidence of neural tube defect ?
- (A) Vit. V
 - (B) Folate
 - (C) Vit. E
 - (D) Vit. C
172. Mirena is :
- (A) Progesterone IUCD
 - (B) Hormonal implant
 - (C) Anti Progesterone
 - (D) Used for MTP
173. Drug contraindicated in patient with rheumatic heart disease in PPH is :
- (A) Oxytocin infusion
 - (B) Methylergometrine
 - (C) Misoprostol
 - (D) Carboprost
174. Polyhydramnios is not associated with :
- (A) Bilateral renal agenesis
 - (B) Aneucephaly
 - (C) Open Spina bifida
 - (D) Tracheoesophageal fistula
175. Cervical smear fixation is done by :
- (A) Ethyl alcohol
 - (B) Acetone
 - (C) Xylene
 - (D) Formalin
176. The most common site for tubal ligation in female sterilisation should be :
- (A) Isthmus
 - (B) Ampullary
 - (C) Cornual
 - (D) Fimbrial
177. During pregnancy HIV transmission occurs mostly during :
- (A) 1st Trimester
 - (B) 2nd Trimester
 - (C) 3rd Trimester
 - (D) During labour
178. Which of the following is **not** the physiological change in pregnancy ?
- (A) Increase in intravascular volume
 - (B) Increase in cardiac output
 - (C) Increase in stroke volume
 - (D) Increase in peripheral vascular resistance
179. In the Manning scoring system of biophysical profile for fetal monitoring, which parameter is **not** included ?
- (A) Fetal tone
 - (B) Fetal gross body movement
 - (C) Oxytocin challenge test
 - (D) Non-stress test
180. The shortest diameter in fetal head is :
- (A) Submento-bregmatic
 - (B) Suboccipito frontal
 - (C) Occipito frontal
 - (D) Mentoverical

181. Cause chronic pelvic pain in endometriosis is :
- (A) Fixity of uterus
 - (B) Prostaglandin E₂(PGE₂) in peritoneal fluid
 - (C) Formation of large chocolate cyst
 - (D) Nodular thickening of uterosacral ligament
182. Use of oral contraceptive pills decreases the incidence of all of the following **except** :
- (A) Ectopic pregnancy
 - (B) Hepatic adenoma
 - (C) Ovarian malignancy
 - (D) Pelvic inflammatory disease
183. When in labour, a diagnosis of occipito posterior presentation is made, the most appropriate management in this case would be :
- (A) Emergency Caesarean Section
 - (B) Watch for progress of labour
 - (C) Early rupture of membranes
 - (D) Start oxytocin drip
184. Blood in urine in a patient in labour for 2 days, most appropriate diagnosis is :
- (A) Impending scar rupture
 - (B) Urethral injury
 - (C) Obstructed labour
 - (D) Cystitis
185. Amniotic fluid contains acetylcholinesterase enzyme. What is the diagnosis ?
- (A) Open spina bifida
 - (B) Gastroschisis
 - (C) Omphalocele
 - (D) Osteogenesis imperfect
186. Following should be taken care in Rh isoimmunised mother during delivery :
- (A) Prophylactic ergometrine to be given after delivery
 - (B) Manual Removal of Placenta (MRP) to be done
 - (C) Cord clamping should be delayed to reduce incidence of fetal anemia
 - (D) Cord clamping should be done as soon as possible after delivery
187. The most common congenital anomaly in baby born to Insulin Dependent Diabetes Mellitus (IDDM) mother is :
- (A) Neural tube defect
 - (B) Cardiovascular anomalies
 - (C) GIT anomalies
 - (D) Pulmonary anomalies
188. With which of the following types of viral hepatitis infection in pregnancy, the maternal mortality is highest ?
- (A) Hepatitis A
 - (B) Hepatitis B
 - (C) Hepatitis C
 - (D) Hepatitis E

189. All of the following are known risk factor for development of endometrical carcinoma **except** :
- (A) Early Menopause
(B) Corpus cancer syndrome
(C) Use of HRT
(D) Tamoxifen
190. Ca Cerix, lymphatic spread involve which of the lymph node first :
- (A) Obturator
(B) Common iliac
(C) Paraaortic
(D) Inguinal
191. False statement regarding intravenous anaesthetics is :
- (A) Dexmedetomidine is non-selective α agonist
(B) Droperidol is not used nowadays as it causes prolonged QT interval
(C) Ketamine is a phencyclidine derivative
(D) Ketamine is primarily an antagonist of N-methyl-D-aspartate receptor
192. Which iv anaesthetic is represented by the above chemical structure ?
- (A) Dexmedetomidine
(B) Ketamine
(C) Propofol
(D) Thiopentone
193. According to metabolism and plasma clearance, Lorazepam is classified as :
- (A) Short-acting benzodiazepine
(B) Intermediate-acting benzodiazepine
(C) Long-acting benzodiazepine
(D) Ultrashort-acting benzodiazepine
194. Naturally occurring opioid compound is :
- (A) Heroin
(B) Hydromorphone
(C) Buprenorphine
(D) Morphine
195. Which opioid has least plasma protein binding ?
- (A) Fentanyl
(B) Alfentanil
(C) Morphine
(D) Sufentanil
196. Bleuler's four As consist of all except :
- (A) Ambivalence
(B) Automatism
(C) Affect disturbance
(D) Association disturbance



197. La belle indifference is a feature of :
- (A) Borderline personality
 - (B) Schizophrenia
 - (C) Conversion disorder
 - (D) Mania
198. False sensory perceptin occurring in the absence of any relevant sensory stimulatio of the sensory modality involved is known as :
- (A) Delusion
 - (B) Illusion
 - (C) Imagination
 - (D) Hallucination
199. Which of the following statement regarding sleep is false ?
- (A) Sleep is fundamental behaviour of all animal species
 - (B) Sleep spindles (12 to 14cps) and K complexes are features of stage-1 sleep
 - (C) Primary pacemaker for generating circadian rhythms lies in the suprachiasmatic nucleus (SCN) of the hypothalamus
 - (D) Early morning awaking is a feature of major depressive disorder
200. Which of the following structure is damaged in alcoholic Korsakoff's psychosis ?
- (A) Frontal cortex
 - (B) Mammillary body and dorsomedial nucleus of thalamus
 - (C) Internal capsule
 - (D) Caudate nucleus

.....

SPACE FOR ROUGH WORK

Faint, illegible text, likely bleed-through from the reverse side of the page.

SEAL

