



21 March 2024

National and International News

State of Global Climate Report 2023



Context:

The World Meteorological Organisation (WMO) published the new annual State of the Climate report on Tuesday (March 19), revealing that 2023 broke records as the hottest year on record.

Key points:

Greenhouse Gases (GHGs):

- GHGs like **carbon dioxide, methane, and nitrous oxide** are responsible for trapping solar radiation in the atmosphere, leading to global warming.
- **Concentrations of these gases reached record highs in 2022**, the latest year with consolidated global values available (1984–2022), according to the WMO report.

Surface Temperature:

- The global average near-surface temperature in **2023 soared to 1.45 degrees Celsius above pre-industrial levels, the highest on record.**
- The primary reason for this increase is the rising concentrations of GHGs, although the onset of El Niño in 2023 also played a role in boosting temperatures.

Ocean Heat Content (OHC):

- Oceans have absorbed nearly **90% of the extra heat trapped by GHGs since 1971**, leading to a steady increase in their temperature.
- In 2023, the OHC reached its highest level in the 65-year observational record.

Marine Heat Waves (MHWs):

- Global oceans experienced an **average daily marine heatwave coverage of 32% in 2023**, well above the previous record of **23% in 2016.**
- MHWs occur when a region of the sea's surface temperature rises to 3 or 4 degrees Celsius above the average for at least five days.

Antarctic Sea-Ice Extent:

- Antarctic sea-ice extent hit a **record low of 1.79 million km<sup>2</sup> in February 2023**, the lowest since satellite records began in 1979.



- The extent remained at a record low from June to early November, with the annual maximum in September reaching **16.96 million km<sup>2</sup>**, approximately **1.5 million km<sup>2</sup>** below the **1991–2020 average**.

**Glacier Retreat:**

- The hydrological year **2022-2023** witnessed the **largest loss of ice on record for the global set of reference glaciers, especially in North America and Europe**.
- The annual mass balance of the reference glaciers dropped to a new low in 2022-2023, reaching **-1.2 m w.e.**, which represents the amount of mass gained or lost by the glacier expressed in metres of water equivalent.

**Nana Jagannath Shankarseth****Context:**

- Recently, the Maharashtra cabinet made a significant decision regarding **Mumbai Central station**.
- They decided to request the Ministry of Railways to rename Mumbai Central station after Nana Jagannath Shankarseth.


**About:**

- Born on **February 10, 1803**, in a wealthy Brahmin family in Murbad, Thane district.
- He took over the family business at a young age after his father's demise in 1822.
- Inspired by **Sir Jamsetjee Jeejeebhoy**, he became a **renowned social reformer, educationist, and philanthropist**.
- Often described as the "**architect**" of Mumbai (Bombay), he made significant contributions to various sectors, laying a strong foundation for the city.
- He earned the **goodwill of both Indians and the British** and became the **first Indian to be nominated to the Legislative Council of Bombay**.

**Shankarseth's Contributions**

- He founded the Native School of Bombay, later renamed as the Bombay Native Institution and then the Board of Education, which evolved into **Elphinstone College**.
- Shankarseth, along with Sir Jamsetjee Jeejeebhoy, was part of the committee that gave **impetus to the first train project in India**,



	<p>which ran between Boribunder and Thane on April 16, 1853, undertaken by the Great Indian Peninsular Railway Company.</p>
<p><b>Kisan Credit Card (KCC) Fisheries scheme</b></p> <p><b>Kisan Credit Card (KCC) Scheme</b></p> <ul style="list-style-type: none"> <li>The Kisan Credit Card (KCC) scheme was introduced in <b>1998</b> for issue of <b>Kisan Credit Cards to farmers on the basis of their holdings</b> for uniform adoption by the banks so that farmers may use them to readily purchase agriculture inputs such as seeds, fertilizers, pesticides etc. and draw cash for their production needs.</li> </ul>	<p><b>Context:</b></p> <ul style="list-style-type: none"> <li>The <b>Kisan Credit Card (KCC) Fisheries scheme</b> has been integrated into the <b>JanSamarth Portal</b> by the <b>Department of Fisheries</b>.</li> <li>This integration aims to <b>enhance credit accessibility for fishers, fish farmers, and stakeholders nationwide</b>.</li> </ul> <p><b>JanSamarth Portal:</b></p> <ul style="list-style-type: none"> <li>JanSamarth is an innovative online platform that <b>facilitates direct interactions between lenders and beneficiaries</b>.</li> <li>It enables citizens to <b>access loans under specific Central government schemes</b>.</li> <li>In <b>2018-19</b>, the <b>Kisan Credit Card (KCC) facility was extended to fishers and fish farmers</b> to meet their working capital requirements.</li> <li>The scheme covers various farmer categories, including individuals, joint borrowers, Joint Liability Groups, and Self Help Groups.</li> <li>It offers an <b>annual interest subvention of 2%</b>, along with an additional subvention of 3% for timely repayment.</li> </ul>
<p><b>Gender Pay Gap Report</b></p> 	<p><b>Context:</b></p> <ul style="list-style-type: none"> <li>The <b>World Bank's recent report</b> highlights a persistent global issue: women continue to earn significantly less than men.</li> <li>The gap is often cited as 77 cents for every dollar earned by men, known as the <b>"gender pay gap."</b></li> </ul> <p><b>Key points:</b></p> <p><b>Definition:</b> The <b>International Labour Organization (ILO)</b> defines the gender pay gap as the difference between the average wage levels of all working women and men.</p> <p><b>Focus:</b> The metric focuses on overall wage differences, not on comparing the pay of men and women in identical roles.</p>

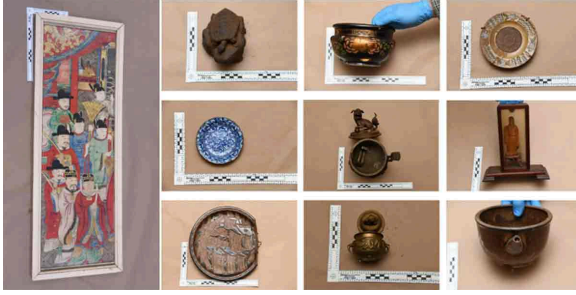


తెలుగు



## Daily Current Affairs Encyclopedia

### Battle of Okinawa



### Context:

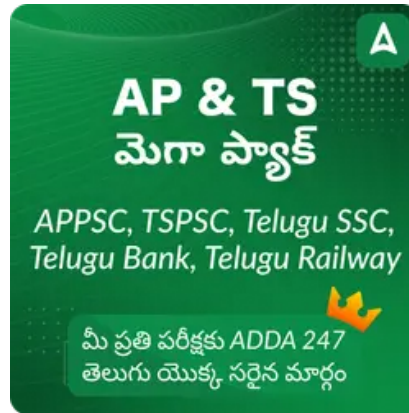
- The **FBI(Federal Bureau of Investigation)** returned **22 looted artefacts** to **Japan** after a Massachusetts family discovered them while going through their late **World War II veteran** father's belongings.

### Key points:

- The artefacts, missing for nearly 80 years, date back to the **18th and 19th centuries**.
- They include six portraits, a **hand-drawn 19th-century map of Okinawa**, and various pottery and ceramics, representing a significant piece of Okinawan history.

### About:

- The Battle of Okinawa, which took place from **April 1 to June 22, 1945**, stands as the **Pacific Theater's most extensive amphibious assault of World War II**.
- This significant event signaled the start of the Japanese Empire's decline and played a pivotal role in paving the way for the Allied triumph in the war.



### Copyright © by Adda247

All rights are reserved. No part of this document may be reproduced, stored in a retrieval system or transmitted in any form or by any means, electronic, mechanical, photocopying, recording or otherwise, without prior permission of Adda247.