



12 April 2024

National and International News

CDP-SURAKSHA



Context;

- The government has introduced a **new digital platform called CDP-SURAKSHA to disburse subsidies to horticulture farmers** as part of the **Cluster Development Programme (CDP)**, an initiative to **promote horticulture crops** and boost the sector's growth.
- The CDP-SURAKSHA is essentially a **digital platform**.
- SURAKSHA stands for **“System for Unified Resource Allocation, Knowledge, and Secure Horticulture Assistance.”**

Key points:

- CDP-SURAKSHA enables **instant subsidy disbursement to farmers' bank accounts using e-RUPI vouchers**, facilitating transactions through the **National Payments Corporation of India (NPCI)**.
- CDP-SURAKSHA's features include database integration with PM-KISAN, cloud-based server space from NIC, UIDAI validation, eRUPI integration, LGD, content management system, geotagging, and geo-fencing.
- **e-RUPI is a one-time payment mechanism from NPCI that doesn't require a card, digital payment app, or internet banking access.**
- It can be shared with beneficiaries via SMS or QR code.
- The CDP aims to develop **horticulture clusters, with 55 identified clusters and 12 selected for the pilot.**
- The initiative will cover about 9 lakh hectares and benefit 10 lakh farmers, attracting private investment of Rs 8,250 crore.



# Daily Current Affairs Encyclopedia

## Israel Deploys C-Dome Defense System



### Context:

- Israel recently deployed the **C-Dome defense system** for the first time to intercept a **suspicious aerial target near the southern city of Eilat**.

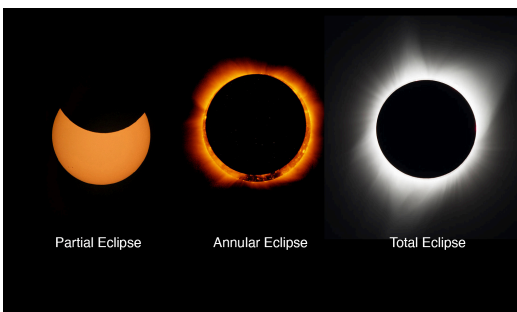
### Key points:

- This action came after an alert in the area, which had previously been targeted by missile fire from **Yemen's Houthi rebels**.
- The **C-Dome, a naval adaptation of the Iron Dome**, successfully intercepted the target, marking its maiden operational use.

### C-Dome: Naval Adaptation of Iron Dome

- The **C-Dome defense system**, mounted on Sa'ar 6-class corvettes, is the naval counterpart of the land-based Iron Dome.
- Developed by **Rafael Advanced Defence Systems**, the C-Dome employs the same interceptor technology as the **Iron Dome**, providing **robust defense against rocket and missile threats**.
- This operational debut underscores Israel's ongoing efforts to enhance its defensive capabilities in response to evolving security challenges.

## Total solar eclipse



### Context:

- During the Total Solar Eclipse on **April 8, 2024, North America, Mexico, and Canada experienced a momentary plunge into darkness**.
- The crew members of the International Space Station had a unique perspective, capturing the Moon's shadow cast over Earth.

### Solar eclipse and its different types:

- A solar eclipse occurs when the **Moon moves between Earth and the Sun, blocking sunlight either fully or partially**.
- There are **four types of solar eclipses: total, annular, partial, and hybrid**.
- In a total solar eclipse, the **Moon completely blocks the Sun, darkening the sky, and observers may see the Sun's corona**.
- An **annular solar eclipse** happens when the Moon covers the Sun's center, leaving a ring of fire visible.
- A **partial solar eclipse** occurs when the Moon partially covers the Sun, creating a crescent shape.
- Both partial and annular eclipses have regions outside the Moon's shadow seeing a partial eclipse.
- The partial solar eclipse is the most common type.
- The **hybrid solar eclipse is rare**, shifting between



total and annular as the Moon's shadow moves.

**How often does a solar eclipse take place?**

- Solar eclipses occur during the **new moon phase when the Moon and Sun align on the same side of Earth.**
- A new moon happens **approximately every 29.5 days due to the Moon's orbit around Earth.**
- Solar eclipses don't occur every month but **rather between two to five times annually.**
- The Moon's orbit is tilted about five degrees relative to Earth's orbit around the Sun, causing the Moon's shadow to often miss Earth, **resulting in fewer opportunities for solar eclipses.**
- Nodes are points where the Moon's orbit intersects with Earth's orbit, creating opportunities for solar eclipses when the new moon crosses these nodes.

**Why is a total solar eclipse so rare?**

- Total solar eclipses **occur about once every 18 months.**
- A specific location on **Earth experiences a total solar eclipse only once every 400 years.**
- Total eclipses are rare because they require being within the umbra, the darkest part of the shadow, which covers less than one percent of the Earth's surface during an eclipse.
- **Due to the large portion of Earth being water and uninhabited land, it's rare for many people to witness a total solar eclipse at once.**

**Kala Azar**



**Context:**

- India has successfully eliminated **visceral leishmaniasis, commonly known as kala-azar,** meeting the target set by the **National Centre for Vector Borne Diseases Control (NCVBDC).**
- Initially aiming for elimination by 2010, India extended the target until 2023 due to persistent challenges.
- Kala-azar, a **vector-borne disease transmitted through sandfly bites,** has been a **significant health challenge in states like Bihar, Jharkhand, West Bengal, and Uttar Pradesh.**

**Key points:**

- According to the NCVBDC, India reported only **520 cases of kala-azar in 2023,** meeting the World Health Organization's (WHO) elimination criteria, which defines elimination as no block in the country reporting more than one case per 10,000 people.
- **In 2020, India accounted for 18% of the global**

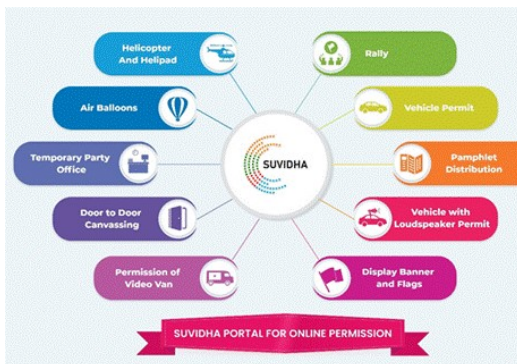


burden of kala-azar.

About:

- Visceral leishmaniasis, commonly known as kala-azar (KA), derives its name from the **late nineteenth century in India**.
- The term "kala-azar" translates to **"black disease,"** describing the **greyish or blackish discoloration of the skin that occurs during infection**.
- This name comes from the Hindi word for black (kala) and the Persian word for disease (azar).
- Kala-azar is a slowly progressing indigenous disease caused by a **protozoan parasite belonging to the genus Leishmania**.
- In India, Leishmania donovani is the **sole parasite responsible for causing this disease**.
- The parasite primarily infects the reticuloendothelial system and is commonly found in **high numbers in the bone marrow, spleen, and liver**.

Suvidha Portal



Context:

- The Suvidha Portal has received over 73,000 applications since the announcement of General Elections 2024.

About:

- It is an **online platform** accessible at <https://suvidha.eci.gov.in>, designed for **political parties and candidates to submit permission requests remotely**.
- The portal also offers offline submission options for inclusivity.
- Managed by **nodal officers across state departments**, the IT platform of Suvidha Portal aims to facilitate the efficient processing of permission requests.
- Additionally, it has a companion app available on iOS and Android platforms, **enabling real-time tracking of request status**.
- One of the key features of the Suvidha Portal is its transparency.
- It provides **real-time tracking of applications, status updates, timestamped submissions, and communication via SMS**.
- This transparency supports the **scrutiny of election expenditures for greater accountability**.
- The Election Commission's commitment is to facilitate a **fair, efficient, and transparent electoral environment**.
- The Suvidha Portal ensures equal access to



తెలుగు

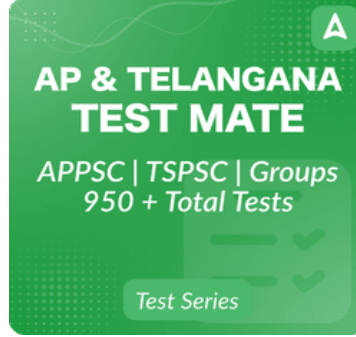
ADDAPEDIA

To get free Live Classes,  
Materials Scan this QR Code &  
Download our Adda247 App



## Daily Current Affairs Encyclopedia

permissions and clearances for all parties and candidates, aligning with this commitment.



**Copyright © by Adda247**

*All rights are reserved. No part of this document may be reproduced, stored in a retrieval system or transmitted in any form or by any means, electronic, mechanical, photocopying, recording or otherwise, without prior permission of Adda247.*